

Pneumatic connection technologies ▶ Push-In fittings

Series QR2 - C Stainless steel

▶ Elbow fitting ▶ external thread ▶ M5 - G 3/8 ▶ push-in fitting ▶ Ø 4 - Ø 12 ▶ QR2-C-RVT



00119553

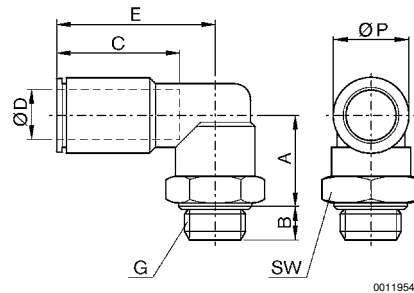
Ambient temperature min./max. -20°C / +150°C
 Working pressure min./max. -0.95 bar / 16 bar

Materials:
 Housing Stainless steel
 Seal Fluorocautchouc
 Tooth lock washer Stainless steel
 Release ring Stainless steel
 Thread Stainless steel

Technical Remarks

- The series QR1 (plastic) and QR2 (metal) can not be combined
- Thread seal with captive O-ring
- For further information about assembling and tolerances of adaptable tubing, see the section "Technical information".

Dimensions



00119540

Part No.	Port D	Port G	A	B	C	E	SW	Ø P	Delivery quantity [Piece]	Weight [kg]
R412005617	Ø 4	M5	15	4	15	14.5	9	9	2	0.008
R412004898	Ø 4	G 1/8	14.5	5.5	15	19.5	13	9	2	0.012
R412004899	Ø 6	G 1/8	16.5	5.5	16	19.5	13	11	2	0.02
R412004900	Ø 8	G 1/8	18.5	5.5	18	19.5	13	13	2	0.022
R412004901	Ø 6	G 1/4	15.5	6.5	16	20.5	16	11	2	0.024
R412005616	Ø 8	G 1/4	17.5	6.5	18	20.5	16	13	2	0.025
R412004902	Ø 10	G 3/8	18.5	7	19	24	21	16	1	0.043
R412004903	Ø 12	G 3/8	21	7	19	26.5	21	19	1	0.06