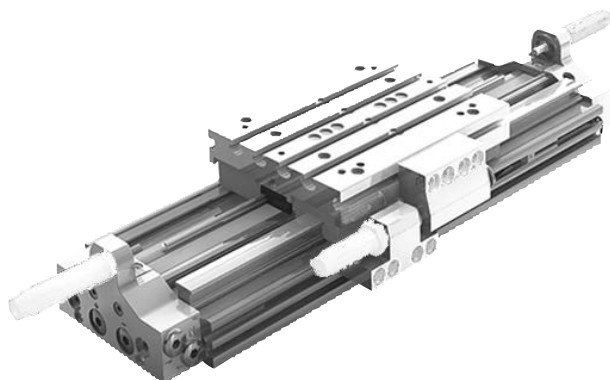


Rodless cylinders ► Rodless cylinder


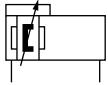

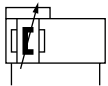
Series CKP

Brochure




Rodless cylinders ▶ Rodless cylinder


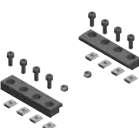

Series CKP

 	Rodless cylinder, Series CKP ▶ Ø 16 - 32 mm ▶ Ports: M7 - G 1/8 ▶ double-acting ▶ with magnetic piston ▶ ball rail guide ▶ Cushioning: pneumatically, adjustable ▶ Easy2Combine-capable with connection kit	4
 	Rodless cylinder, Series CKP-CL ▶ Ø 16 - 32 mm ▶ Ports: M7 - G 1/8 ▶ double-acting ▶ with magnetic piston ▶ ball rail guide ▶ Cushioning: pneumatically, adjustable ▶ Easy2Combine-capable with connection kit ▶ camoLINE product	9



Accessories
Cylinder mountings

	Clamping fixtures ▶ for Series CKP-16, MSC-20, CKP-25, CKP-32, MSC-25	14
--	--	----



Easy2Combine connection kits

	Easy2Combine, Connection kit ▶ For combination: CKP / CKP	15
	Easy2Combine, Connection kit ▶ For combination: CKP / CKP	16
	Centering rings	17






Stroke setting accessories

	Kit for stroke length adjustment	18
	Kit for intermediate position ▶ for RTC-CG, RTC-HD ▶ double-acting ▶ with magnetic piston	19

Sensors and sensor mountings, accessories

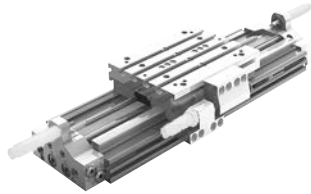
	Sensor mounting, Series ST4 ▶ for Series ST4 ▶ to mount on cylinder CKP	23
	Sensor, Series ST4 ▶ with cable ▶ open cable ends, 3-pin	23

Rodless cylinders ▶ Rodless cylinder
Series CKP

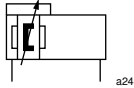
	<p>Sensor, Series ST4 ▶ 4 mm C-slot ▶ with cable ▶ Plug, M8, 3-pin</p>	25
	<p>Sensor, Series ST4 ▶ 4 mm C-slot ▶ with cable ▶ Plug, M8, 3-pin, with knurled screw</p>	26
	<p>Connecting cable, Series CN2 ▶ Socket, M8x1, 3-pin, straight ▶ open cable ends, 3-pin</p>	28
	<p>Connecting cable, Series CN2 ▶ Socket, Snap Ø8, 3-pin, with detent, straight ▶ without wire end ferrule, tin-plated, 3-pin</p>	29
	<p>T-groove nut ▶ for Series CKP, GPC, RTC</p>	30

Rodless cylinder, Series CKP

▶ Ø 16 - 32 mm ▶ Ports: M7 - G 1/8 ▶ double-acting ▶ with magnetic piston ▶ ball rail guide ▶ Cushioning: pneumatically, adjustable ▶ Easy2Combine-capable with connection kit



00130807



a24

Working pressure min./max.	3 bar / 8 bar
Ambient temperature min./max.	-10°C / +60°C
Medium temperature min./max.	-10°C / +60°C
Medium	Compressed air
Max. particle size	5 µm
Pressure for determining piston forces	6,3 bar

Materials:

Cover	Aluminum, anodized
Seals	Polyurethane
Sealing strips	Polyurethane; Stainless steel
Ball rail table	Aluminum, anodized
Guide rail	Steel, hardened

An example configuration is illustrated. The delivered product may thus deviate from the illustration.

Technical Remarks

- The pressure dew point must be at least 15 °C under ambient and medium temperature and may not exceed 3 °C.
- The delivered product is lubricated for lifetime.
- This product may only be operated with oil-free, dry compressed air.

Piston Ø	[mm]	16	25	32		
Piston force	[N]	127	309	507		
Cushioning length	[mm]	20	20	20		
Cushioning energy	[J]	1.5	4	7		
Speed max.	[m/s]	2	2	2		
Stroke max.	[mm]	1800	3700	3700		

	Piston Ø [mm] Ports	16 M7	25 G 1/8	32 G 1/8		
	Stroke 100	R480163938	R480163948	R480163958		
	200	R480163939	R480163949	R480163959		
	300	R480163940	R480163950	R480163960		
	400	R480163941	R480163951	R480163961		
	500	R480163942	R480163952	R480163962		
	600	R480163943	R480163953	R480163963		
	700	R480163944	R480163954	R480163964		
	800	R480163945	R480163955	R480163965		
	900	R480163946	R480163956	R480163966		
	1000	R480163947	R480163957	R480163967		

Weight [kg]	Piston Ø	16	25	32		
	Stroke 100	2.18	3.88	7.5		
	200	2.65	4.69	8.77		
	300	3.13	5.49	10.04		
	400	3.6	6.29	11.31		
	500	4.08	7.1	12.58		
	600	4.56	7.9	13.85		
	700	5.03	8.7	15.12		
	800	5.51	9.5	16.39		
	900	5.98	10.31	17.66		
	1000	6.46	11.11	18.93		

Part numbers marked in bold are available from the central warehouse in Germany, see the shopping basket for more detailed information

Pneumatics catalog, online PDF, as of 2017-04-05, ©AVENTICS S.à r.l., subject to change

Rodless cylinders ▶ Rodless cylinder

Rodless cylinder, Series CKP

▶ Ø 16 - 32 mm ▶ Ports: M7 - G 1/8 ▶ double-acting ▶ with magnetic piston ▶ ball rail guide ▶ Cushioning: pneumatically, adjustable ▶ Easy2Combine-capable with connection kit

Configurable product

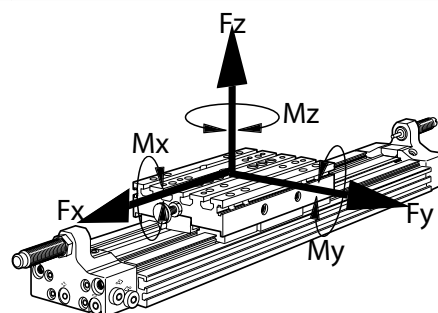


This product is configurable. Please use our Internet configurator at <http://www.aventics.com> or contact the nearest AVENTICS sales office.

Permissible forces F_x , F_y , F_z and torques M_x , M_y , M_z

$$\frac{M_x}{M_{x_{max}}} + \frac{M_y}{M_{y_{max}}} + \frac{M_z}{M_{z_{max}}} \leq 1$$

00125850



00123809

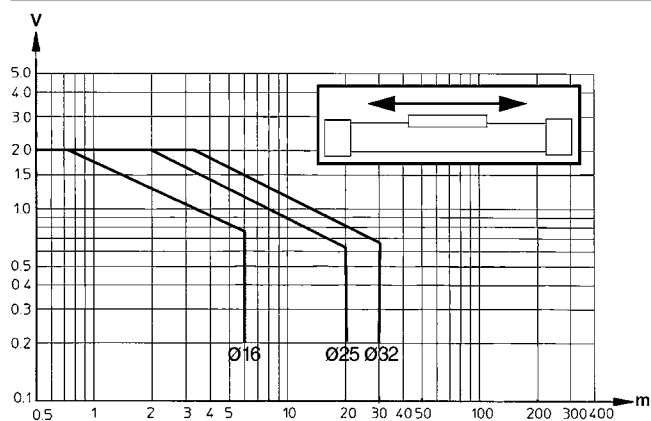
With simultaneously moments on the cylinder this equation must be used in addition to the maximum moments check. In the cushioning phase of the movement additional forces occur and must be considered. Please use our calculation tool for rodless cylinders on the <http://www.aventics.com>.

Max. dynamic forces and torques

Piston Ø	F_x [N]	F_y [N]	F_z [N]	M_x [Nm]	M_y [Nm]	M_z [Nm]							
16	2912	2912	2912	83	116	143							
25	3280	3280	8568	283	454	205							
32	5280	5280	15620	687	867	374							

Recommended values for an expected lifetime of 3200 km

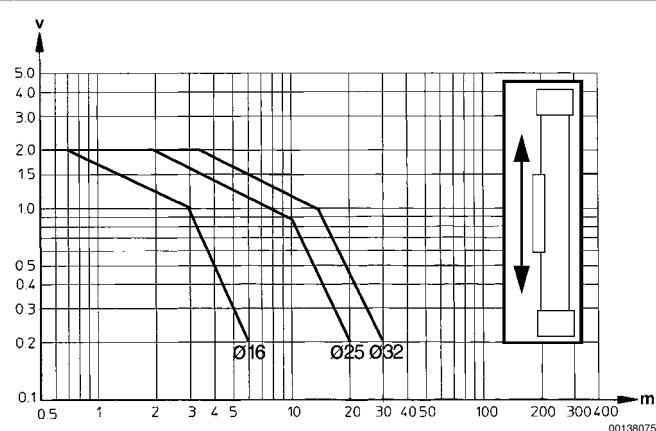
Horizontally mounted, with pneumatic cushioning



v = Piston velocity [m/s]
 m = Cushionable mass [kg]

00138074

Vertically mounted, with pneumatic cushioning



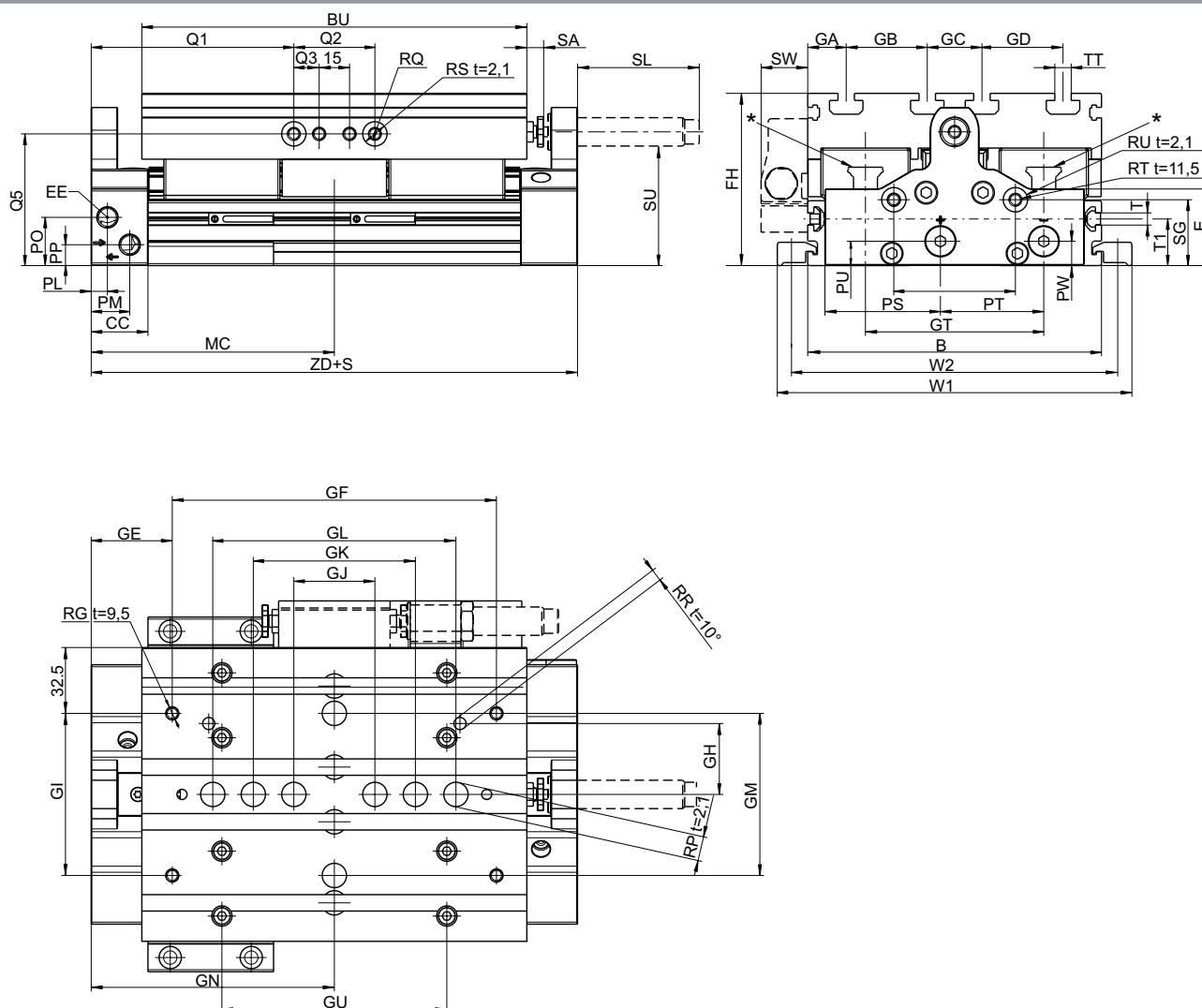
00138075

Part numbers marked in bold are available from the central warehouse in Germany, see the shopping basket for more detailed information

Pneumatics catalog, online PDF, as of 2017-04-05, ©AVENTICS S.à r.l., subject to change

Rodless cylinder, Series CKP

▶ Ø 16 - 32 mm ▶ Ports: M7 - G 1/8 ▶ double-acting ▶ with magnetic piston ▶ ball rail guide ▶ Cushioning: pneumatically, adjustable ▶ Easy2Combine-capable with connection kit

Dimensions


00130705

t = depth

* CKP 16: 2x Lube ports on each runner block, CKP 25 / 30: Lube nipple of funnel type with thread connection M3

Piston Ø	B	E	BU	CC	EE	FH	GA	GB	GC	GD	GN	GE	GF
16	90	27.3	125	28	M7	56	15	20	20	20	93.5	38.5	110
25	110	31.4	155	28	G 1/8	66	25	20	20	20	107.5	47.5	120
32	145	37.8	190	28	G 1/8	85	19	40	27	40	120	40	160

Piston Ø	GH	GI	GJ	GK	GL	GM	GT	GU	MC	PL	PM	PO	PP
16	20	40	40	60	80	–	57	80	93.5	8	21	12.8	6.8
25	42	80	40	60	80	–	66	106	107.5	8	20	22	10.5
32	35	80	40	80	120	80	88	111	120	8	19	23.8	10.3

Piston Ø	PS	PT	PU	PW	Q1	Q2	Q3	RG	Ø RP	RQ	Ø RR	Ø RS	RT
16	33	29.8	6.8	6	73.5	40	–	M5	9 F7	M5 t=10,5	4 F7	9 F7	M6
25	37.5	24	10.5	10.5	87.5	40	12.5	M5	9 F7	M6 t=14,5	5 F7	12 F7	M6
32	57	51	12	12	100	40	12.5	M6	12 F7	M6 t=14,5	6 F7	12 F7	M6

Part numbers marked in bold are available from the central warehouse in Germany, see the shopping basket for more detailed information

Pneumatics catalog, online PDF, as of 2017-04-05, ©AVENTICS S.à r.l., subject to change

Rodless cylinders ▶ Rodless cylinder

Rodless cylinder, Series CKP

▶ Ø 16 - 32 mm ▶ Ports: M7 - G 1/8 ▶ double-acting ▶ with magnetic piston ▶ ball rail guide ▶ Cushioning: pneumatically, adjustable ▶ Easy2Combine-capable with connection kit

Piston Ø	Ø RU	SG	SL	SU	SW	T	TT	W1	W2	T1	ZD	SA	m [kg]1)
16	12 F7	20.3	43	37	20	M4	N6	112	102	16	187	0-10	0.64
25	12 F7	14	60	43	23	N6	N6	140	126	20	215	0-10	1.11
32	12 F7	32.5	60	59	23	N6	N8	175	161	23	240	0-10	2.62

t = depth

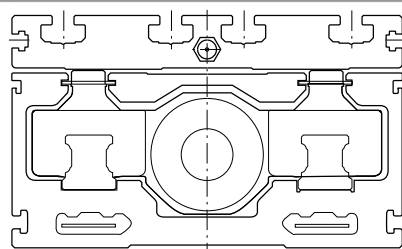
1) m = moving mass

SA = stroke adjustment with use of shock absorber.

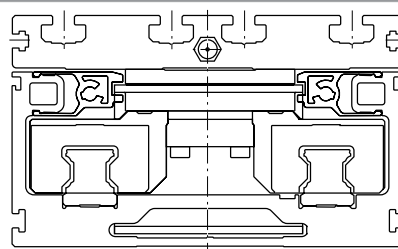
Adjustment made with adjustment screw.

Shock absorber can be replaced without readjustment of end position.

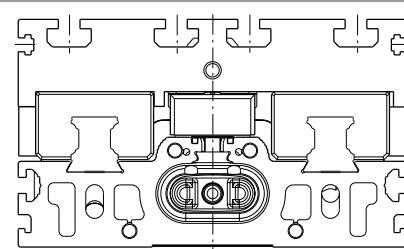
CKP is part of the compact module family.



CKK



CKR

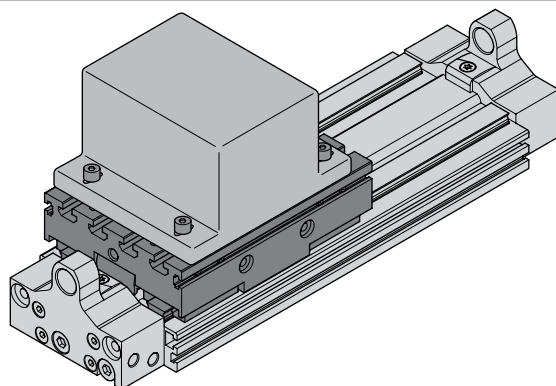


CKP

00129097

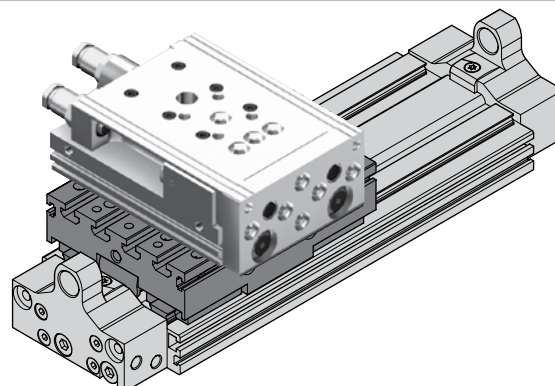
Further information can be found in the operating instructions.

fastening a customer attachment onto the CKP with T-groove nuts.



00137868

fastening of automation system Easy2Combine to CKP using center rings and T-groove nuts (example: mini slide MSC)

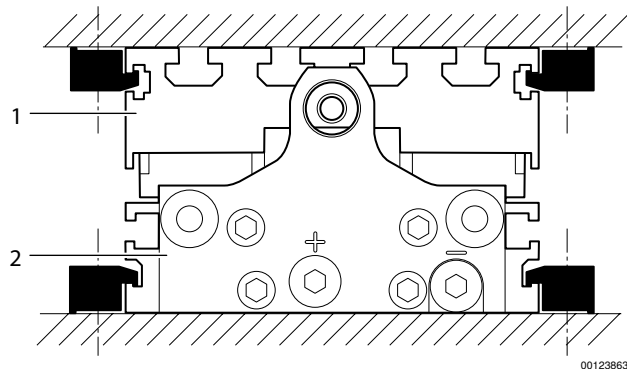


00137866

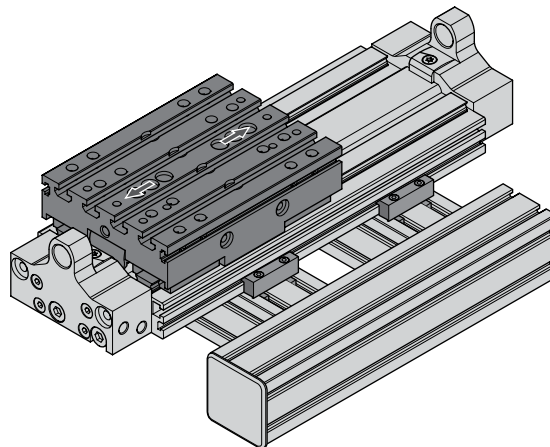
Rodless cylinder, Series CKP

▶ Ø 16 - 32 mm ▶ Ports: M7 - G 1/8 ▶ double-acting ▶ with magnetic piston ▶ ball rail guide ▶ Cushioning: pneumatically, adjustable ▶ Easy2Combine-capable with connection kit

fastening of CKP to customer-built mounting base via clamping fixtures



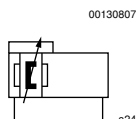
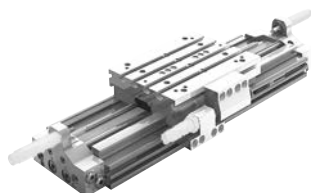
fastening of CKP on BME (Basic mechanical elements) profile construction via connection plates and clamping fixtures



Rodless cylinders ▶ Rodless cylinder

Rodless cylinder, Series CKP-CL

▶ Ø 16 - 32 mm ▶ Ports: M7 - G 1/8 ▶ double-acting ▶ with magnetic piston ▶ ball rail guide ▶ Cushioning: pneumatically, adjustable ▶ Easy2Combine-capable with connection kit ▶ camoLINE product



Working pressure min./max.	3 bar / 8 bar
Ambient temperature min./max.	-10°C / +60°C
Medium temperature min./max.	-10°C / +60°C
Medium	Compressed air
Max. particle size	5 µm
Pressure for determining piston forces	6,3 bar

Materials:

Cover	Aluminum, anodized
Seals	Polyurethane
Sealing strips	Polyurethane; Stainless steel
Ball rail table	Aluminum, anodized
Guide rail	Steel, hardened

An example configuration is illustrated. The delivered product may thus deviate from the illustration.

Technical Remarks

- The pressure dew point must be at least 15 °C under ambient and medium temperature and may not exceed 3 °C.
- The delivered product is lubricated for lifetime.
- This product may only be operated with oil-free, dry compressed air.

Piston Ø	[mm]	16	25	32		
Piston force	[N]	127	309	507		
Cushioning length	[mm]	20	20	20		
Cushioning energy	[J]	1.5	4	7		
Speed max.	[m/s]	2	2	2		
Stroke max.	[mm]	1400	1400	1400		

	Piston Ø [mm] Ports	16 M7	25 G 1/8	32 G 1/8		
	Stroke 200	R480163968	R480163978	R480163988		
	320	R480163969	R480163979	R480163989		
	400	R480163970	R480163980	R480163990		
	520	R480163971	R480163981	R480163991		
	600	R480163972	R480163982	R480163992		
	800	R480163973	R480163983	R480163993		
	1000	R480163974	R480163984	R480163994		
	1240	R480163975	R480163985	R480163995		

Weight [kg]	Piston Ø	16	25	32		
	Stroke 200	2.65	4.69	8.77		
	320	3.22	5.65	10.29		
	400	3.6	6.29	11.31		
	520	4.18	7.26	12.83		
	600	4.56	7.9	13.85		
	800	5.51	9.5	16.39		
	1000	6.46	11.11	18.93		
	1240	7.6	13.04	21.98		

Rodless cylinder, Series CKP-CL

▶ Ø 16 - 32 mm ▶ Ports: M7 - G 1/8 ▶ double-acting ▶ with magnetic piston ▶ ball rail guide ▶ Cushioning: pneumatically, adjustable ▶ Easy2Combine-capable with connection kit ▶ camoLINE product

Configurable product

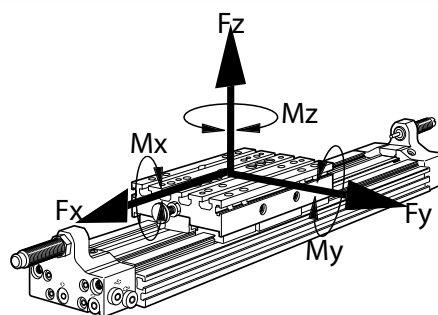


This product is configurable. Please use our Internet configurator at <http://www.aventics.com> or contact the nearest AVENTICS sales office.

Permissible forces F_x , F_y , F_z and torques M_x , M_y , M_z

$$\frac{M_x}{M_{x_{max}}} + \frac{M_y}{M_{y_{max}}} + \frac{M_z}{M_{z_{max}}} \leq 1$$

00125850



00123809

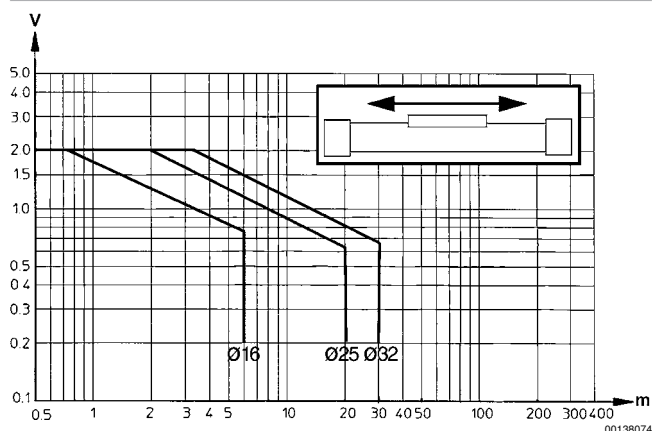
With simultaneously moments on the cylinder this equation must be used in addition to the maximum moments check. In the cushioning phase of the movement additional forces occur and must be considered. Please use our calculation tool for rodless cylinders on the <http://www.aventics.com>.

Max. dynamic forces and torques

Piston Ø	F_x [N]	F_y [N]	F_z [N]	M_x [Nm]	M_y [Nm]	M_z [Nm]							
16	2912	2912	2912	83	116	143							
25	3280	3280	8568	283	454	205							
32	5280	5280	15620	687	867	374							

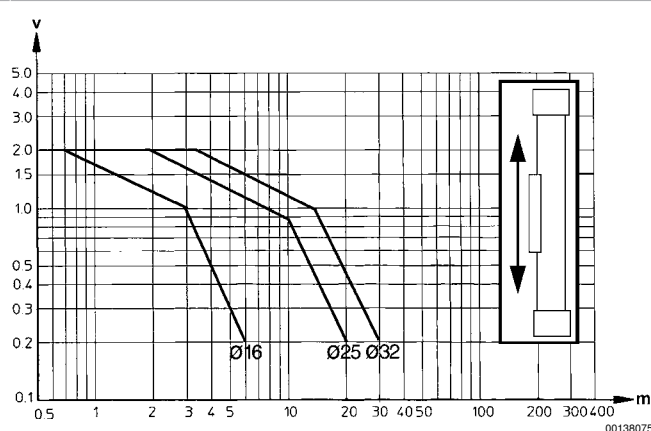
Recommended values for an expected lifetime of 3200 km

Horizontally mounted, with pneumatic cushioning



v = Piston velocity [m/s]
 m = Cushionable mass [kg]

Vertically mounted, with pneumatic cushioning



Technical drawing of the 1000 series hydraulic cylinder, showing three views: front, top, and side. The drawing includes numerous dimension lines and labels for various parts and dimensions.

Front View Dimensions:

- Q1, Q2, Q3 15, Q5
- BU, RQ, RS $t=2,1$, SA, SL, SU
- EE, PO, PP, PL, PM, CC, MC, ZD+S

Top View Dimensions:

- GA, GB, GC, GD, TT, FH, SW, RU $t=2,1$, RT $t=11,5$, PU, PS, GT, PT, PW, B, W2, W1, T1, SG, E

Side View Dimensions:

- GF, GE, GL, GK, GJ, RG $t=9,5$, GI, 32,5, GN, GU, RR $t=10^\circ$, GH, GM, RP $t=2,1$

* CKP 16: 2x Lube ports on each runner block, CKP 25 / 30: Lube nipple of funnel type with thread connection M3

00130705

Part numbers marked in bold are available from the central warehouse in Germany, see the shopping basket for more detailed information
Pneumatics catalog, online PDF, as of 2017-04-05, ©AVENTICS S.à r.l., subject to change

Rodless cylinder, Series CKP-CL

▶ Ø 16 - 32 mm ▶ Ports: M7 - G 1/8 ▶ double-acting ▶ with magnetic piston ▶ ball rail guide ▶ Cushioning: pneumatically, adjustable ▶ Easy2Combine-capable with connection kit ▶ camoLINE product

Piston Ø	Ø RU	SG	SL	SU	SW	T	TT	W1	W2	T1	ZD	SA	m [kg]1)
16	12 F7	20.3	43	37	20	M4	N6	112	102	16	187	0-10	0.64
25	12 F7	14	60	43	23	N6	N6	140	126	20	215	0-10	1.11
32	12 F7	32.5	60	59	23	N6	N8	175	161	23	240	0-10	2.62

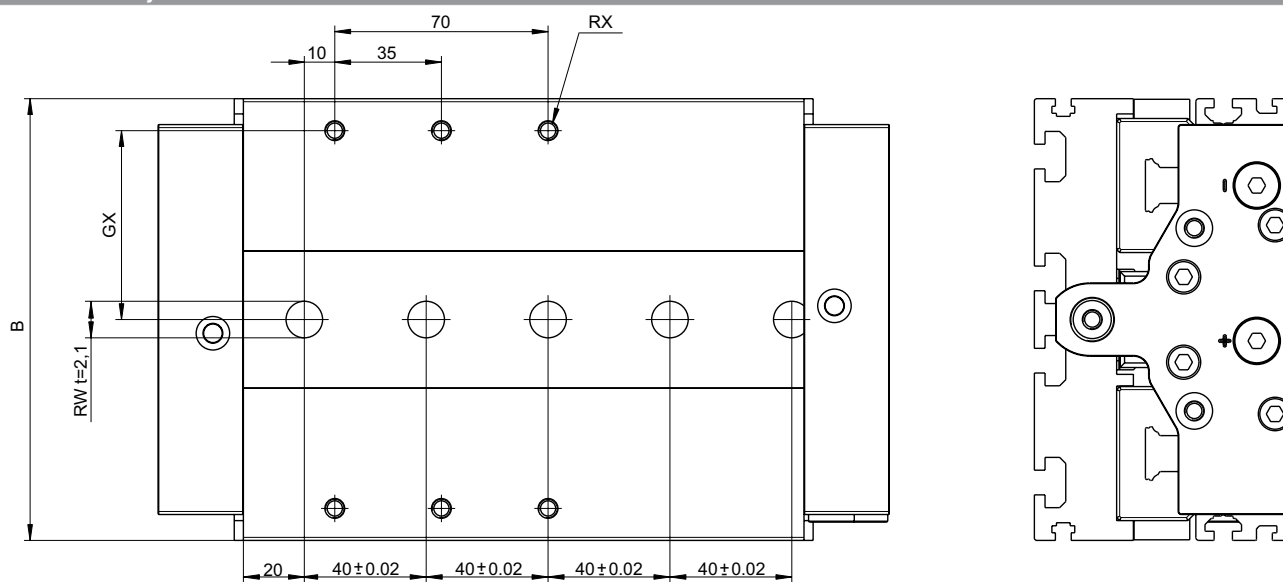
t = depth

1) m = moving mass

SA = stroke adjustment with use of shock absorber.

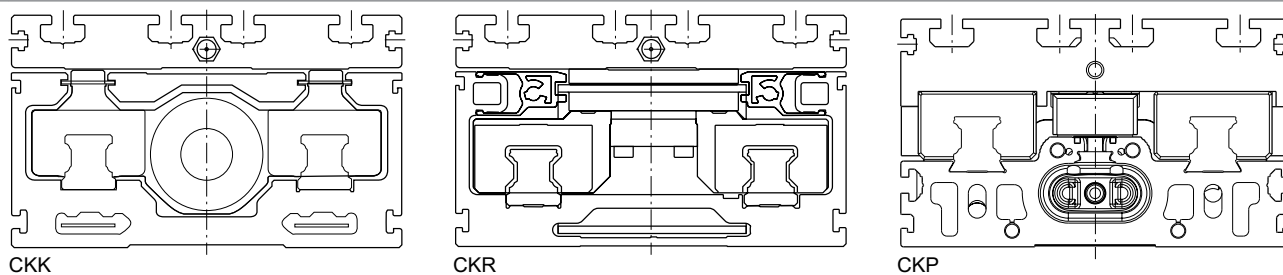
Adjustment made with adjustment screw.

Shock absorber can be replaced without readjustment of end position.

Additional Easy2Combine interface on CKP-CL


Piston Ø	B	Ø RW	RX	GX								
16	90	9 H7 t=2,1	M4 t=7,5	38								
25	110	9 H7 t=2,1	M5 t=9	46								
32	145	12 H7 t=2,1	M6 t=13	62								

t = depth

CKP is part of the compact module family.


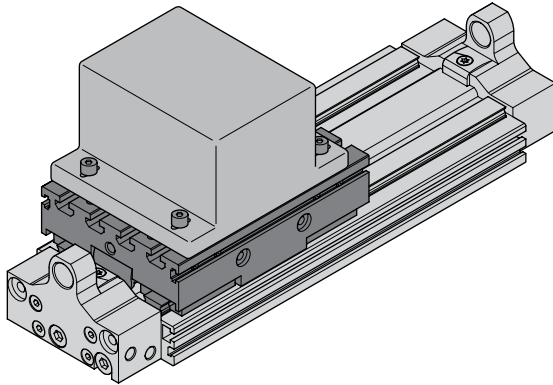
Further information can be found in the operating instructions.

Rodless cylinders ▶ Rodless cylinder

Rodless cylinder, Series CKP-CL

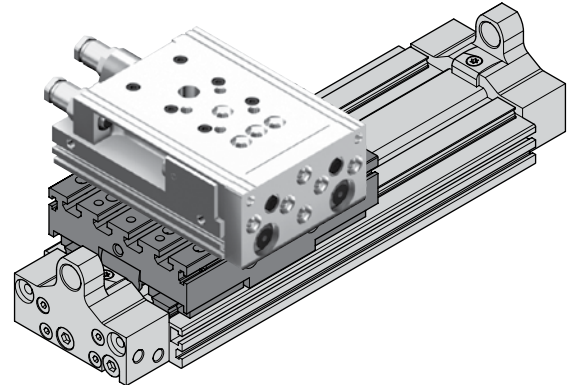
▶ Ø 16 - 32 mm ▶ Ports: M7 - G 1/8 ▶ double-acting ▶ with magnetic piston ▶ ball rail guide ▶ Cushioning: pneumatically, adjustable ▶ Easy2Combine-capable with connection kit ▶ camoLINE product

fastening a customer attachment onto the CKP with T-groove nuts.



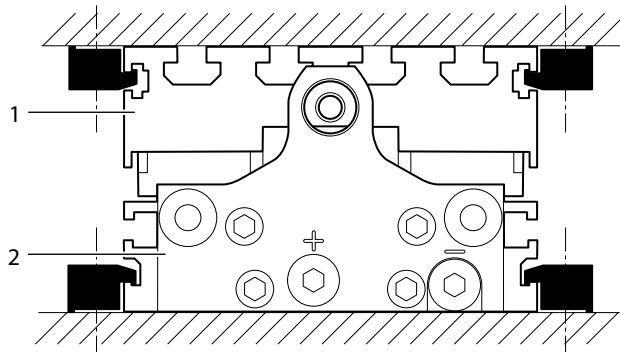
00137868

fastening of automation system Easy2Combine to CKP using center rings and T-groove nuts (example: mini slide MSC)



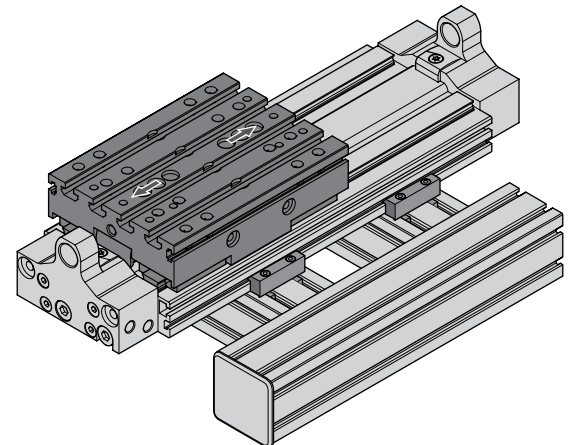
00137866

fastening of CKP to customer-built mounting base via clamping fixtures



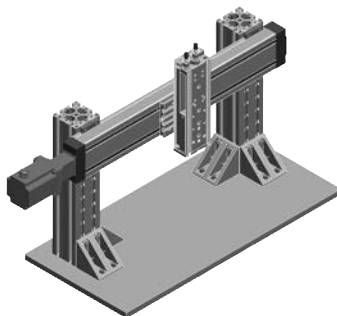
00123863

fastening of CKP on BME (Basic mechanical elements) profile construction via connection plates and clamping fixtures



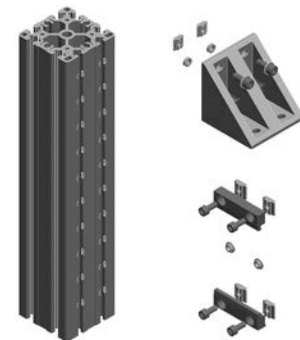
00137867

CKP-CL is part of the camoLINE assortment.



00129091

Further information can be found in the operating instructions.



00129095

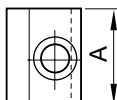
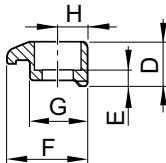
Strut profile:
Compact and rigid design
Centering rings
Compatible with Basic Mechanical Elements (BME), profile size PB 45

Series CKP
Accessories
Clamping fixtures

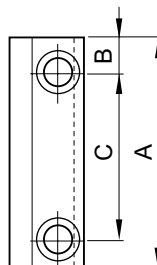
► for Series CKP-16, MSC-20, CKP-25, CKP-32, MSC-25



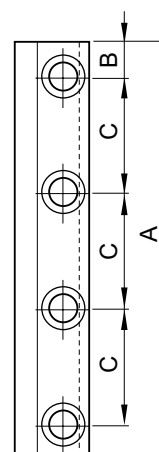
00129096



Typ 1



Typ 2



Typ 3

00129099

Part No.	For series	1)	Typ	A	B	C	D	E	F	G	H
R037531000	CKP-16 MSC-20	M4	1	25	–	–	9	4.6	14.5	10.5	5
R037531032	CKP-16 MSC-20	M4	2	72	11	50	9	4.6	14.5	10.5	5
R037531033	CKP-16 MSC-20	M4	2	62	11	40	9	4.6	14.5	10.5	5
R037531026	CKP-16 MSC-20	M4	3	77	8.5	20	9	4.6	14.5	10.5	5
R037541026	CKP-25 CKP-32 MSC-25	M5	3	77	8.5	20	11.5	4.8	19.3	14	7
R037551000	CKP-25 CKP-32 MSC-25	M6	1	25	–	–	11.5	5.3	19.3	14	7
R037551033	CKP-25 CKP-32 MSC-25	M6	2	72	11	50	11.5	5.3	19.3	14	7
R037551034	CKP-25 CKP-32 MSC-25	M6	2	62	11	40	11.5	5.3	19.3	14	7

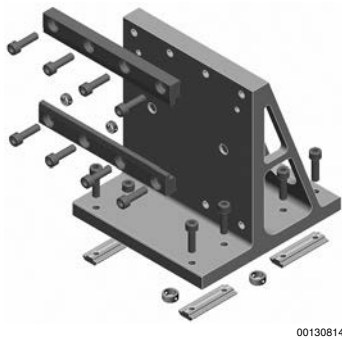
1) countersink for screw
 Material: Aluminum

Rodless cylinders ▶ Rodless cylinder

Series CKP Accessories

Easy2Combine, Connection kit

▶ For combination: CKP / CKP



Materials:

Centering sleeve

Stainless steel

Subbase

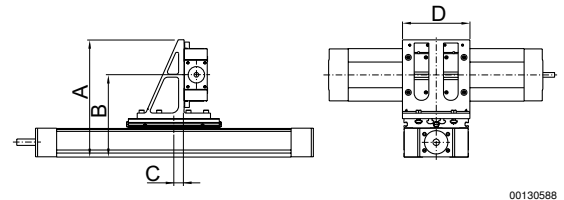
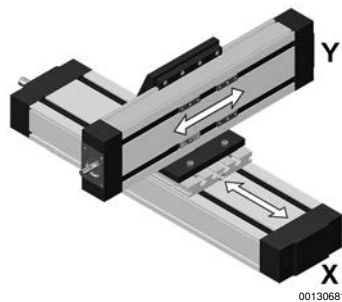
Aluminum

Kit consisting of:

angle brackets, clamping fixtures, sliding blocks, screws, centering rings

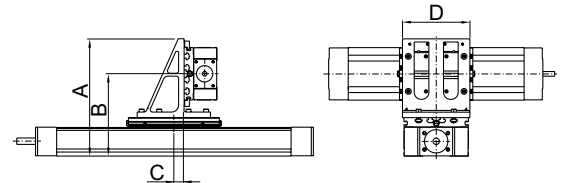
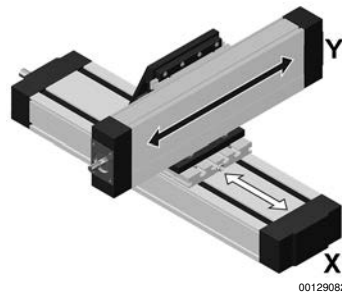
Easy2Combine basic	Easy2Combine add-on part	Weight [kg]	Part No.
CKP-16, CKP-25	CKP-16	1.1	R039110255
CKP-25	CKP-25	1.5	R039110256
CKP-32	CKP-25	2.1	R039110326
		2.8	R039110258

Y-axis connected by the profile (carriage travels)



00130588

Y-axis connected by the carriage (profile travels)



00129090

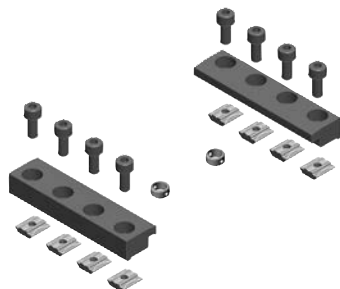
Series CKP
Accessories

Part No.	X 1)	Y 2)	X/Y A	X/Y B	X/Y C	D	m [kg]	Weight kg				
R039110255	CKP-16	CKP-16	191	131	17.5	115	1.1	1.1				
R039110256	CKP-25	CKP-25	201	141								
R039110326	CKP-32	CKP-25	226.5	152	18.5	145	1.5	1.5				
R039110326	CKP-32	CKP-25	248	176	21	145	2.1	2.1				
R039110258	CKP-32	CKP-32	286	193.5	21	175	2.8	2.8				

1) basic
2) add-on-part
m = mass

Easy2Combine, Connection kit

► For combination: CKP / CKP



00130812

Materials:

Centering rings

Clamping fixtures

T-groove nut

Stainless steel

Aluminum

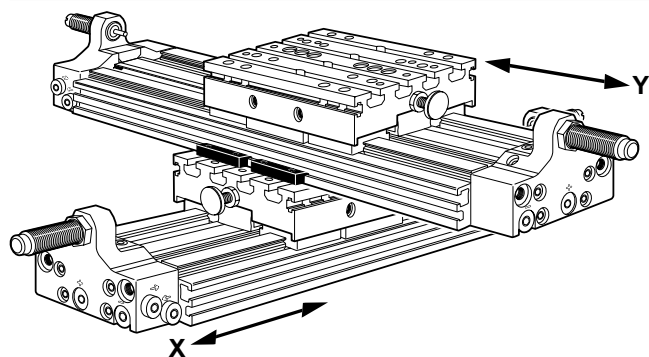
Steel, galvanized

Connection kit consisting of:

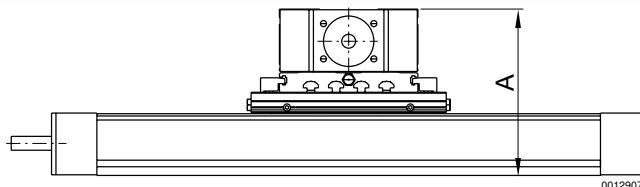
Clamping fixtures, sliding blocks, screws, centering rings

Easy2Combine basic	Easy2Combine add-on part	Weight [kg]	Part No.
CKP-16, CKP-25	CKP-16	0.2	R039120045
CKP-25	CKP-25	0.3	R039120046
CKP-32	CKP-25	0.3	R039120047
	CKP-32	0.4	R039120048

Y-axis connected by the profile (carriage travels)



00129101

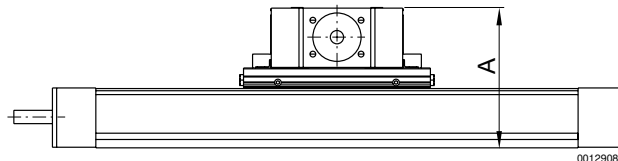
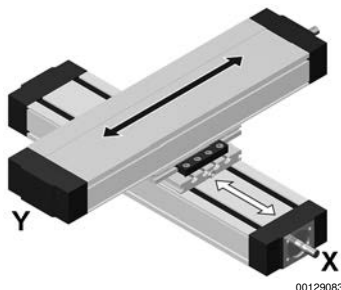


00129076

Rodless cylinders ▶ Rodless cylinder

Series CKP Accessories

Y-axis connected by the carriage (profile travels)



Part No.	X 1)	Y 2)	A	Weight kg							
R039120045	CKP-16	CKP-16	96	0.2							
	CKP-25		106								
R039120046	CKP-25	CKP-25	116	0.3							
R039120047	CKP-32	CKP-25	135	0.3							
R039120048	CKP-32	CKP-32	150	0.4							

1) basic
2) add-on-part
m = mass

Centering rings



Fig. 1

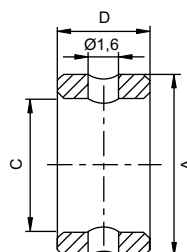
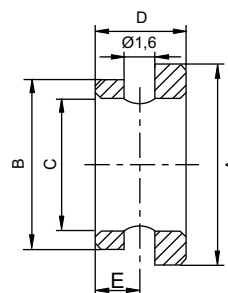


Fig. 2



00112657

The delivered product may vary from that in the illustration.

00119489_a

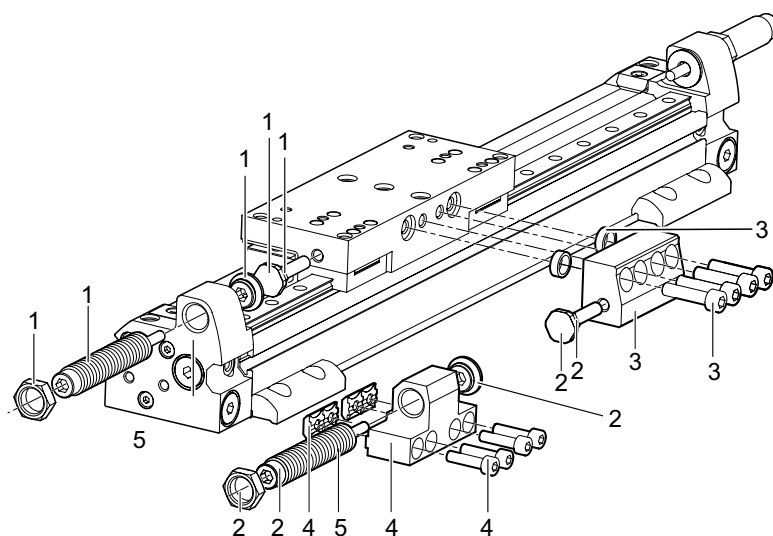
Part No.	Ø	A k6	B k6	C ±0,1	D −0,2	E +0,2	Material	Delivery quantity [Piece]	Fig.	
R412000669	5	5	–	3,4	3	–	Stainless steel	6	Fig. 1	
R412000668	7	7	–	5,5	3	–	Stainless steel	6	Fig. 1	
R412000670	9	9	–	6,6	4	–	Stainless steel	6	Fig. 1	
R412000671	12	12	–	9,0	4	–	Stainless steel	6	Fig. 1	
R402003731	16	16	–	11	6	–	Stainless steel	6	Fig. 1	
R412004030	5-7	7	5	3,4	3	1,5	Stainless steel	6	Fig. 2	
R412004032	5-9	9	5	3,4	3,5	1,5	Stainless steel	6	Fig. 2	
R412004033	7-9	9	7	5,5	3,5	1,5	Stainless steel	6	Fig. 2	
R412004034	9-12	12	9	6,6	4,0	2	Stainless steel	6	Fig. 2	
R402003736	12-16	16	12	9	5	2	Stainless steel	6	Fig. 2	

Series RTC
 Accessories

Kit for stroke length adjustment



00125260



00124927

Shock absorber

Part No.	Single parts	Ø16	Ø25	Ø32	Ø40	Ø50	Ø63	Moving mass			
R402002804	1) 2)	RTC-HD RTC-CG CKP	—	—	—	—	—	< 4 kg			
R402003618	1) 2)	RTC-HD RTC-CG CKP	—	—	—	—	—	> 4 kg			
R402002805	1) 2)	—	RTC-HD RTC-CG CKP	RTC-HD RTC-CG CKP	RTC-HD RTC-CG	—	—	< 8 kg			
R402003619	1) 2)	—	RTC-HD RTC-CG CKP	RTC-HD RTC-CG CKP	RTC-HD RTC-CG	—	—	> 8 kg			
R402002806	—	—	—	—	—	RTC-HD	RTC-HD	< 23 kg			
R402003620	—	—	—	—	—	RTC-HD	RTC-HD	> 23 kg			

Rodless cylinders ▶ Rodless cylinder
Series RTC
Accessories
Stop

Part No.	Single parts	Ø16	Ø25	Ø32	Ø40	Ø50	Ø63					
R402002695	3)	RTC-HD RTC-CG	–	–	–	–	–					
R402002696	3)	–	RTC-HD RTC-CG	RTC-CG	–	–	–					
R402002698	3)	–	–	RTC-HD	–	–	–					
R402002699	3)	–	–	–	RTC-CG	–	–					
R402002700	3)	–	–	–	RTC-HD	–	–					
R402002701	3)	–	–	–	–	RTC-HD	RTC-HD					

Holder for shock absorber

Part No.	Single parts	Ø16	Ø25	Ø32	Ø40	Ø50	Ø63					
R402002702	4)	RTC-HD RTC-CG CKP	–	–	–	–	–					
R402002703	4)	–	RTC-HD RTC-CG CKP	–	–	–	–					
R402002704	4)	–	–	RTC-HD RTC-CG CKP	RTC-HD RTC-CG	–	–					
R402003397	4)	–	–	–	–	RTC-HD	RTC-HD					

Kit for intermediate position
▶ for RTC-CG, RTC-HD ▶ double-acting ▶ with magnetic piston


IM0045734

Working pressure min./max.
Ambient temperature min./max.
Medium temperature min./max.
Medium
Max. particle size
Oil content of compressed air

4 bar / 8 bar
-10 °C / +60 °C
-10 °C / +60 °C
Compressed air
5 µm
0 mg/m³ - 1 mg/m³

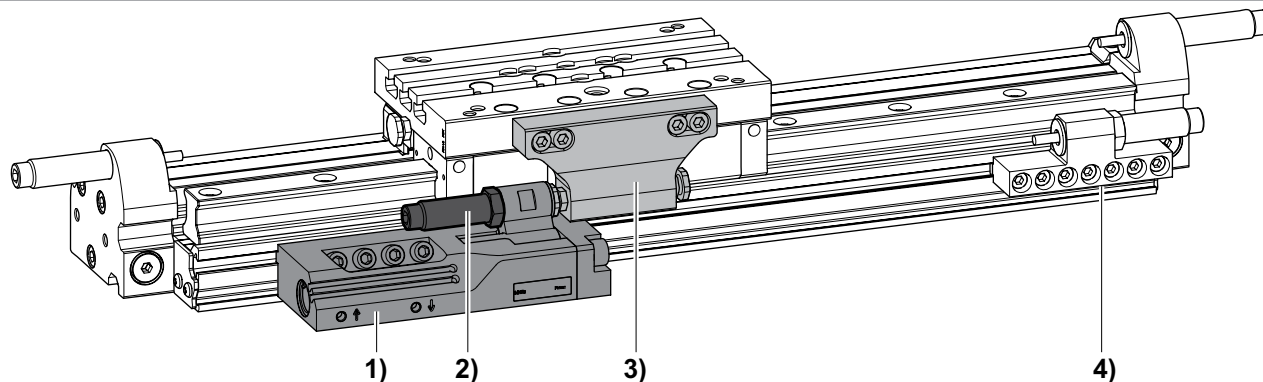
Technical Remarks

- The pressure dew point must be at least 15 °C under ambient and medium temperature and may not exceed 3 °C.
- The oil content of compressed air must remain constant during the life cycle.
- Use only the approved oils from AVENTICS, see chapter „Technical information“.
- The volume per stroke is 4.6 cm³.
- Returning from the stop position is only permissible when not under power.
- The stopper must not be operated without a shock absorber.

Series RTC
Accessories

Weight	Part No.
[kg]	
0.87	R412024700

Overview drawing



IM0045490

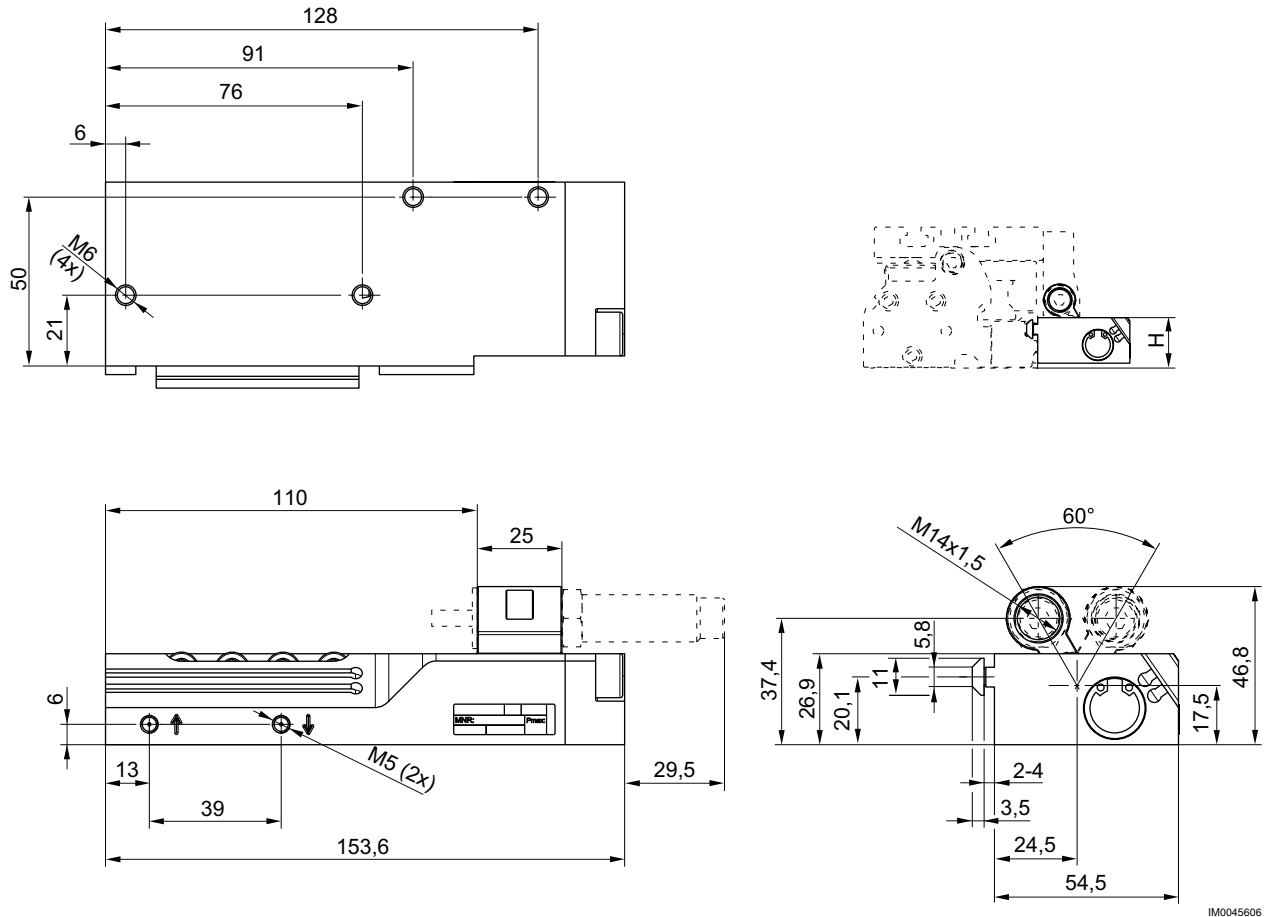
- 1) Intermediate stop
 2) Shock absorber
 3) Stop
 4) Holder for the shock absorber: see stroke length adjustment kit for details

	Pos.	Ø25	Ø32	Ø40								
R412024700	1)	RTC-HD RTC-CG	RTC-HD RTC-CG	RTC-HD RTC-CG								
R402002805	2)	RTC-HD RTC-CG CKP	RTC-HD RTC-CG CKP	RTC-HD RTC-CG								
R402003619	2)	RTC-HD RTC-CG CKP	RTC-HD RTC-CG CKP	RTC-HD RTC-CG								
R402002696	3)	RTC-HD RTC-CG	RTC-CG	-								
R402002698	3)	-	RTC-HD	-								
R402002699	3)	-	-	RTC-CG								
R402002700	3)	-	-	RTC-HD								
R402002702	4)	RTC-HD RTC-CG CKP	-	-								
R402002703	4)	-	RTC-HD RTC-CG CKP	-								
R402002704	4)	-	-	RTC-HD RTC-CG								

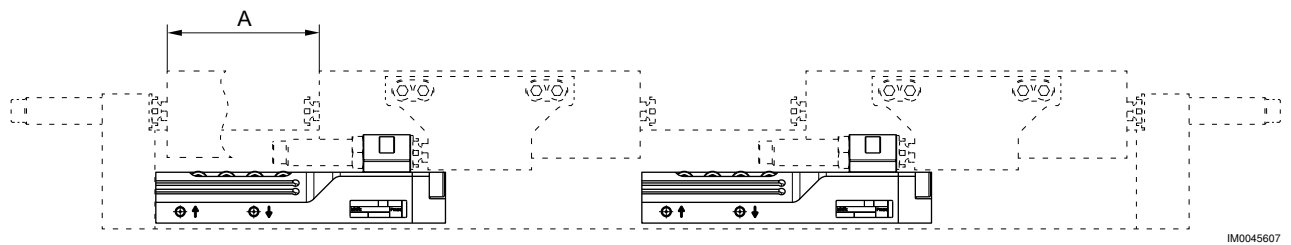
Rodless cylinders ▶ Rodless cylinder

Series RTC Accessories

Dimensions



Direction of travel: left, Stopper position A restricted



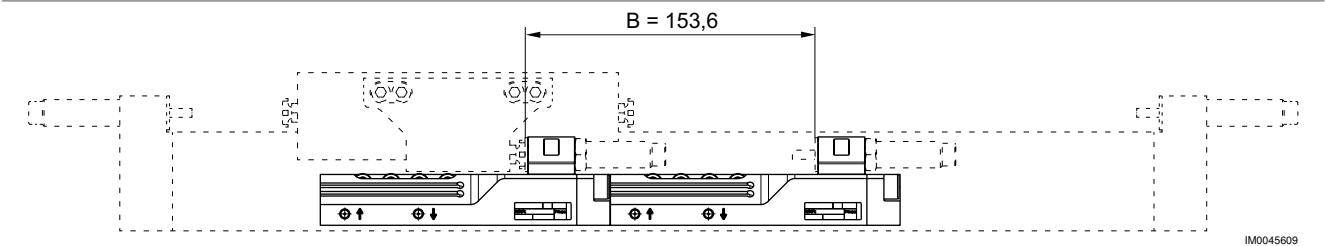
Direction of travel: right, No restriction of the stopper position



Series RTC

Accessories

Multiple installation, Minimum stopper distance B



	A	H										
RTC-CG25	92.5	33.5										
RTC-CG32	80	38.5										
RTC-CG40	79.5	48.5										
RTC-HD25	92.5	27										
RTC-HD32	80	30										
RTC-HD40	79.5	31.5										

Rodless cylinders ▶ Rodless cylinder

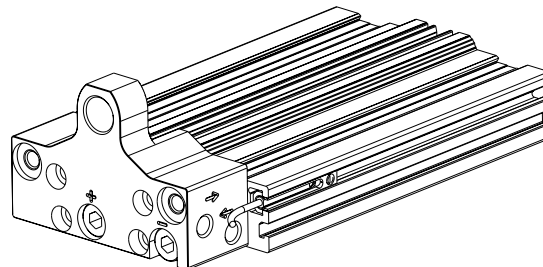
Series CKP Accessories

Sensor mounting, Series ST4

▶ for Series ST4 ▶ to mount on cylinder CKP



00130808



00130815

Part No.	For series	CKP	Material	Weight [kg]						
R402004226	ST4	16	Aluminum	0.034						
R402004227	ST4	25, 32	Aluminum	0.034						

Note that Serie CKP are normally delivered with 2 pairs of sensor holders.

Sensor, Series ST4

▶ with cable ▶ open cable ends, 3-pin



21304

Certificates

Ambient temperature min./max.
Protection class
Switching point precision [mm]
Switching logic
Display
LED status display
Vibration resistance
Shock resistance
Mounting screw

Materials:

Housing
Cable sheath

UL (Underwriters Laboratories)
cULus
RoHS

-30°C / +80°C

IP65, IP67

±0,1

NO (make contact)

LED

Yellow

10 - 55 Hz, 1 mm

30 g / 11 ms

Combination: slotted and hexagon socket

Polyamide, fiber-glass reinforced

Polyurethane

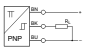
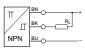
Technical Remarks

- The max. switching capacity must not be exceeded.

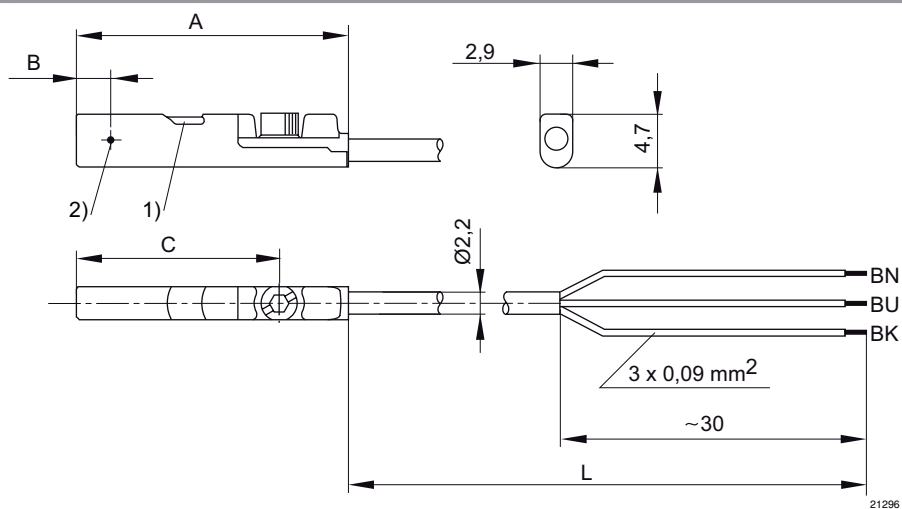
	Type of contact	Cable length	DC operating voltage min./max.	Voltage drop U at I _{max}	DC switching current, max.	AC switching current, max.	Switching capacity	Part No.
		[m]	[V DC]		[A]	[A]		
	Reed	3 5	-	I*Rs	0.13	0.13	3 W / 3 VA	R412019488 R412019489

interfaces: open cable ends; 3-pin
short circuit resistant / Protected against polarity reversal

Series CKP
Accessories

	Type of contact	Cable length	DC operating voltage min./max.	Voltage drop U at I _{max}	DC switching current, max.	AC switching current, max.	Switching capacity	Part No.
		[m]	[V DC]		[A]	[A]		
	electronic PNP	3 5	- 10 / 30	≤ 2,5 V	0.1	-	-	R412019680 R412019681
	electronic NPN	3 5	-	≤ 2,5 V	0.1	-	-	R412019684 R412019685

interfaces: open cable ends; 3-pin
short circuit resistant / Protected against polarity reversal

Dimensions


1) LED 2) Switching point

L = cable length

BN = brown, BK = black, BU = blue

Part No.	A	B	C									
R412019488	26.3	6.3	20.3									
R412019489	26.3	6.3	20.3									
R412019680	23.7	2.8	17.7									
R412019681	23.7	2.8	17.7									
R412019684	23.7	2.8	17.7									
R412019685	23.7	2.8	17.7									

Rodless cylinders ▶ Rodless cylinder

Series CKP Accessories

Sensor, Series ST4

▶ 4 mm C-slot ▶ with cable ▶ Plug, M8, 3-pin



21305

Certificates

UL (Underwriters Laboratories)
cULus
RoHS

Ambient temperature min./max.

-30 °C / +80 °C

Protection class

IP65, IP67

Switching point precision [mm]

±0,1

Switching logic

NO (make contact)

Display

LED

LED status display

Yellow

Vibration resistance

10 - 55 Hz, 1 mm

Shock resistance

30 g / 11 ms

Mounting screw

Combination: slotted and hexagon socket

Materials:

Housing




Polyamide, fiber-glass reinforced

Cable sheath

Polyurethane

Technical Remarks

- The max. switching capacity must not be exceeded.

	Type of contact	Cable length	DC operating voltage min./max.	Voltage drop U at I _{max}	DC switching current, max.	AC switching current, max.	Switching capacity	Part No.
		[m]	[V DC]		[A]	[A]		
	Reed	0.3	5 / 30	I ² Rs	0.13	0.13	3 W / 3 VA	R412019682
	electronic PNP	0.3	10 / 30	≤ 2,5 V	0.1	-	-	R412019683
	electronic NPN	0.3	-	≤ 2,5 V	0.1	-	-	R412019694

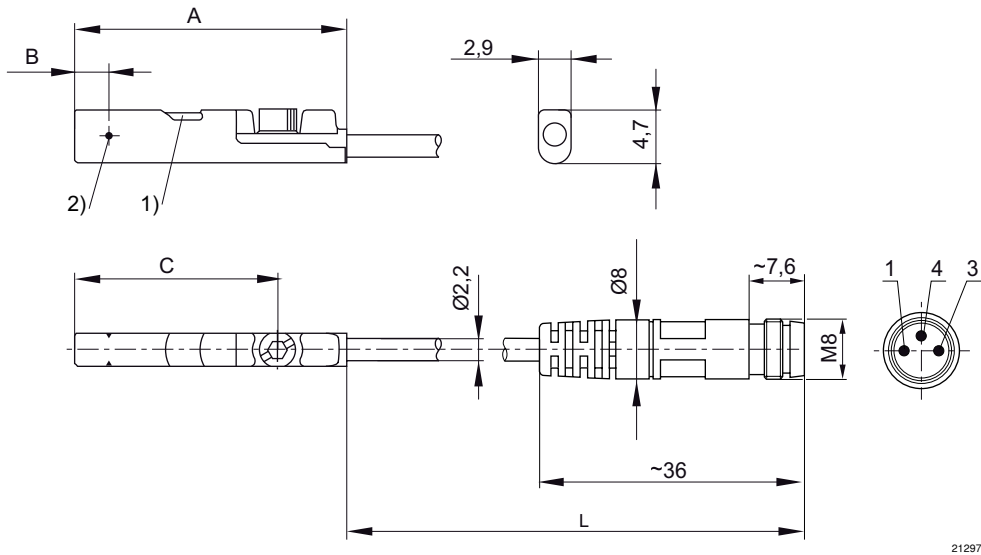
interfaces: Plug; M8; 3-pin

short circuit resistant / Protected against polarity reversal

Series CKP

Accessories

Dimensions



1) LED 2) Switching point
L = cable length
Pin assignment: 1 = (+), 3 = (-), 4 = (OUT)

Part No.	A	B	C									
R412019682	26.3	6.3	20.3									
R412019683	23.7	2.8	17.7									
R412019694	23.7	2.8	17.7									

Sensor, Series ST4

▶ 4 mm C-slot ▶ with cable ▶ Plug, M8, 3-pin, with knurled screw



Certificates	UL (Underwriters Laboratories) cULus RoHS
Ambient temperature min./max.	-30°C / +80°C
Protection class	IP65, IP67
Switching point precision [mm]	±0,1
Switching logic	NO (make contact)
Display	LED
LED status display	Yellow
Vibration resistance	10 - 55 Hz, 1 mm
Shock resistance	30 g / 11 ms
Mounting screw	Combination: slotted and hexagon socket
Materials:	
Housing	Polyamide, fiber-glass reinforced
Cable sheath	Polyurethane

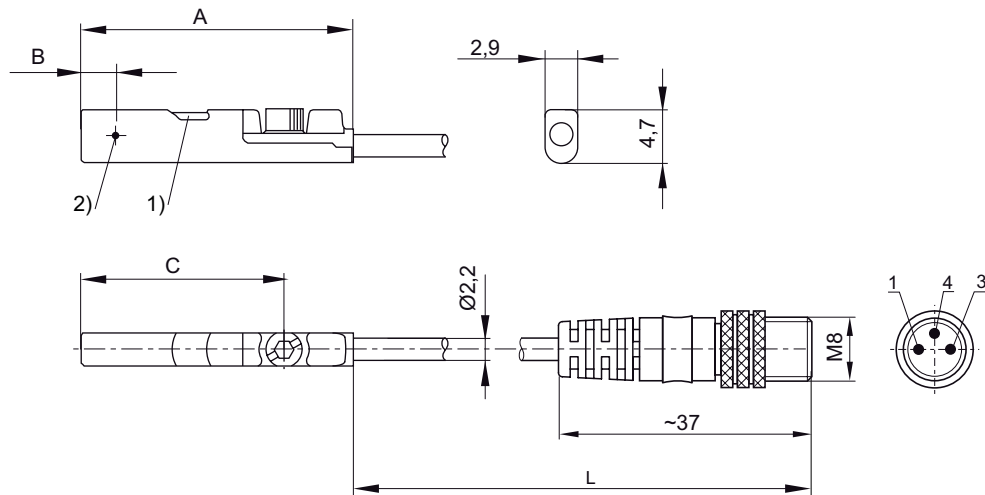
Technical Remarks
■ The max. switching capacity must not be exceeded.

Rodless cylinders ▶ Rodless cylinder

Series CKP Accessories

	Type of contact	Cable length	Voltage drop U at I _{max}	DC switching current, max.	AC switching current, max.	Switching capacity	Part No.
		[m]		[A]	[A]		
	Reed	0.3	I*Rs	0.13	0.13	3 W / 3 VA	R412019490
	electronic PNP	0.3	≤ 2,5 V	0.1	-	-	R412019493
	Reed	0.5	I*Rs	0.13	0.13	3 W / 3 VA	R412019686
	electronic PNP	0.5	≤ 2,5 V	0.1	-	-	R412019687
interfaces: Plug; M8; 3-pin; with knurled screw short circuit resistant / Protected against polarity reversal							

Dimensions



1) LED 2) Switching point
 L = cable length
 Pin assignment: 1 = (+), 3 = (-), 4 = (OUT)

Part No.	A	B	C									
R412019490	26.3	6.3	20.3									
R412019493	23.7	2.8	17.7									
R412019686	26.3	6.3	20.3									
R412019687	23.7	2.8	17.7									

Series CKP
Accessories
Connecting cable, Series CN2

► Socket, M8x1, 3-pin, straight ► open cable ends, 3-pin



00107009_b

Protection class

IP67

Materials:

Housing color

Black

Cable sheath

Polyvinyl chloride

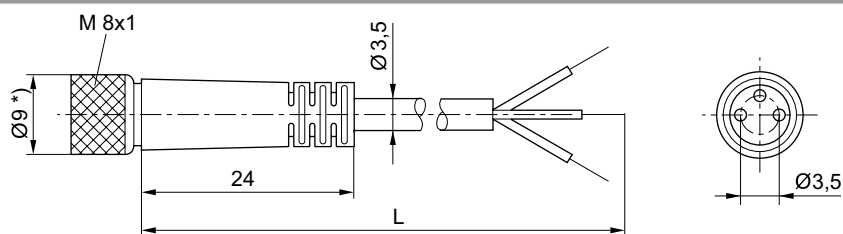
Cable color

Black

Technical Remarks

- The specified protection class is only valid in assembled and tested state.

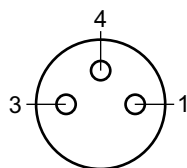
Operational voltage max.	Max. current	Number of wires	Wire cross-section	Cable length L	Weight	Part No.
[V AC]	[A]		[mm ²]	[m]	[kg]	
30	2.5	3	0.34	2	0.066	8946201312
				15	0.486	8946201332

Dimensions


D523_104_b

L = length

*) With 15 m cable length Ø12

Pin assignment


Buchse_3-polig

- (1) BN=brown
- (3) BU=blue
- (4) BK=black

Rodless cylinders ▶ Rodless cylinder

Series CKP Accessories

Connecting cable, Series CN2

▶ Socket, Snap Ø8, 3-pin, with detent, straight ▶ without wire end ferrule, tin-plated, 3-pin



Protection class	IP65
Wire cross-section	0.25 mm²
Materials:	
Housing color	Black
Cable sheath	Polyvinyl chloride

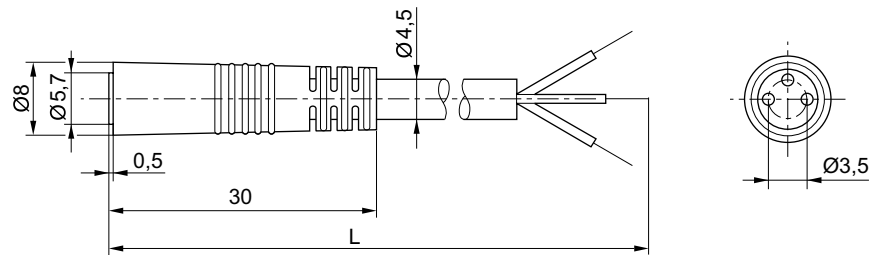
P322_141_a

Technical Remarks

- The specified protection class is only valid in assembled and tested state.

	Operational voltage max.		Max. current	Number of wires	Cable exit	Cable length L	Weight	Part No.
	[V AC]	[V DC]	[A]			[m]	[kg]	
	48	48	3	3	straight 180°	2.5	0.058	8946016112

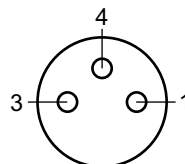
Dimensions



D523_104_a

L = length

Pin assignment



Buchse_3-polig

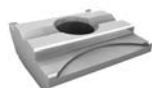
- (1) BN=brown
- (3) BU=blue
- (4) BK=black

Part numbers marked in bold are available from the central warehouse in Germany, see the shopping basket for more detailed information

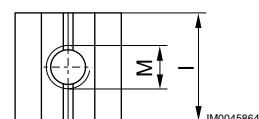
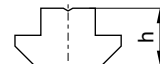
Pneumatics catalog, online PDF, as of 2017-04-05, ©AVENTICS S.à r.l., subject to change

Series CKP
Accessories
T-groove nut

► for Series CKP, GPC, RTC



00127083



Part No.	Type	For series	M	h	l	Material	Weight [kg]
3842523142	N6	CKP, GPC, RTC	M5	4	20	Stainless steel	0.003
3842514931	N8	CKP, GPC, RTC	M8	6	16	Steel galvanized	0.007

Part No.	Delivery quantity [Piece]											
3842523142	100											
3842514931	100											

For N4 grooves on CKP 16 a square nut according to DIN 557 can be used.

AVENTICS GmbH
Ulmer Straße 4
30880 Laatzen, GERMANY
Phone +49 511 2136-0
Fax +49 511 2136-269
www.aventics.com
info@aventics.com



Find more contact information at
www.aventics.com/contact

Only use the AVENTICS products shown in industrial applications. Read the product documentation completely and carefully before using the product. Observe the applicable regulations and laws of the respective country. When integrating the product into applications, note the system manufacturer's specifications for safe use of the product. The data specified only serve to describe the product. No statements concerning a certain condition or suitability for a certain application can be derived from our information. The information given does not release the user from the obligation of own judgment and verification. It must be remembered that the products are subject to a natural process of wear and aging.

05-04-2017

An example configuration is depicted on the title page. The delivered product may thus vary from that in the illustration. Subject to change. © AVENTICS S.à r.l.
This document, as well as the data, specifications and other information set forth in it, are the exclusive property of AVENTICS S.à r.l.. It may not be reproduced or given to third parties without its consent. PDF online