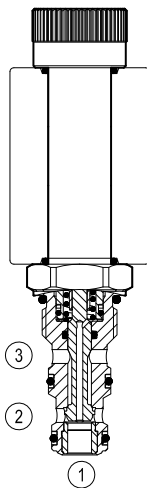


Solenoid operated valves direct acting poppet 3-way 2-position

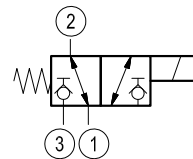
Common cavity, Size 08

VEDT-08A-32

OD.13.01.51 - Y - 00



Version 01



General

| | | |
|---------------------------|----------|------------------------|
| Weight | kg (lbs) | 0.24 (0.53) |
| Installation orientation | | Optional |
| Ambient temperature range | °C (°F) | -30 to 60 (-22 to 140) |

Hydraulic

| | | |
|-------------------------|--------------|---------------------------------------|
| Max. operating pressure | bar (psi) | 250 (3600) |
| Max. flow | l/min. (gpm) | 15 (4) |
| Max. internal leakage | drops/min. | 5 |
| Fluid temperature range | °C (°F) | -20 to 80 (-4 to 176) |
| Response time | ms. | 40-60 at nominal flow (oil at 46 cSt) |

Fluids Mineral-based or synthetics with lubricating properties at viscosities of 20 to 380 mm²/s (cSt)

Installation torque Nm (ft-lbs) 34-41 (25-30)

Recommended degree of fluid contamination Nominal value max. 10µm (NAS 8) ISO 4406 19/17/14

MTTFd 150 years see RE18350-51

Cavity CA-08A-3N see RE 18325-70

Lines bodies and standard assemblies Please refer to section "Hydraulic integrated circuit" or consult factory

Seal kit code RG08A3010530100 material no. R901101723

Seal kit coil code RG16A1PMVQ0010 material no. R934003962

Other technical data See data sheet RE 18350-50

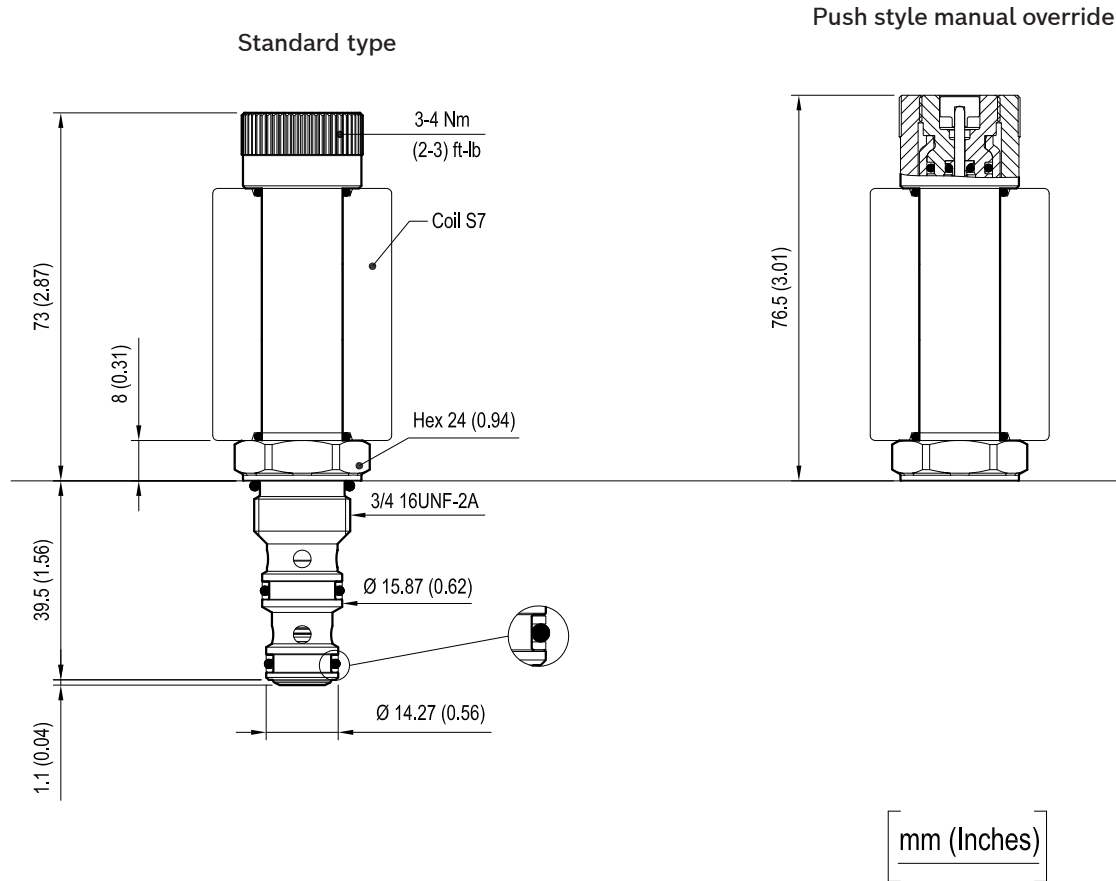
Electrical

| | |
|--------------------------|----------------------------|
| Type of voltage | DC voltage |
| Coil type | S7 |
| Supply voltage | See data sheet RE 18325-90 |
| Power consumption | W 30 or 26 |
| Duty cycle coil | % See performance graphs |
| Type of protection | See data sheet RE 18325-90 |
| Nominal voltage coil 30W | -10% +10% |

Note: Coils must be ordered separately.

Dimensions

Solenoid operated valves poppet 3-way 2-position

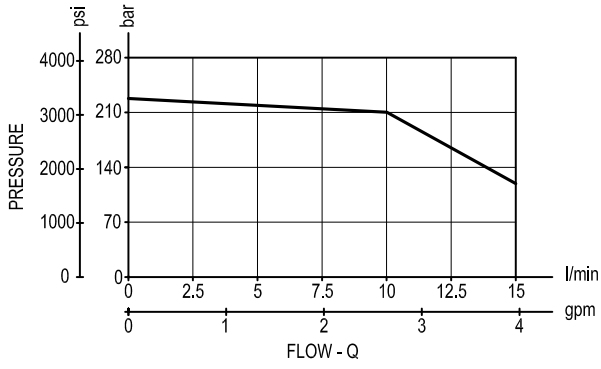


Performance graphs

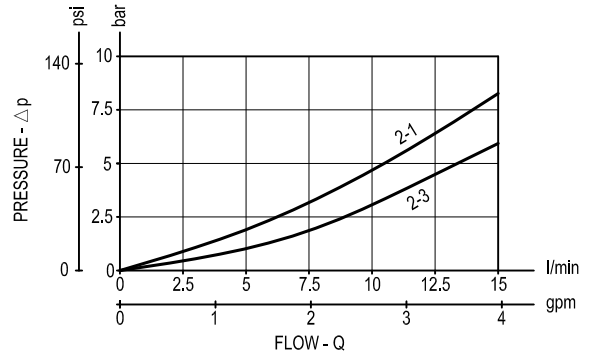
Performance limits

(Hot coil at nominal voltage)

version 01



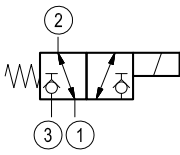
Characteristic curves



Ordering code

| | | | | | | |
|-------|----|----|---|----|---|---|
| OD.13 | 01 | 51 | * | 00 | * | 0 |
|-------|----|----|---|----|---|---|

Solenoid operated valves
poppet 3-way 2-position

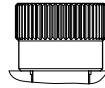


Common cavity: CA-08A-3N

V= version Viton
0= version Buna

standard type

6A =



Push style manual override

6B =



| Type | Material number |
|----------------|-----------------|
| OD1301516A0000 | R934003666 |
| OD1301516B0000 | R934003667 |
| | |
| | |
| | |
| | |
| | |
| | |
| | |

| Type | Material number |
|------|-----------------|
| | |
| | |
| | |
| | |
| | |
| | |
| | |
| | |
| | |