

Logic element, pressure compensator, with static load sense

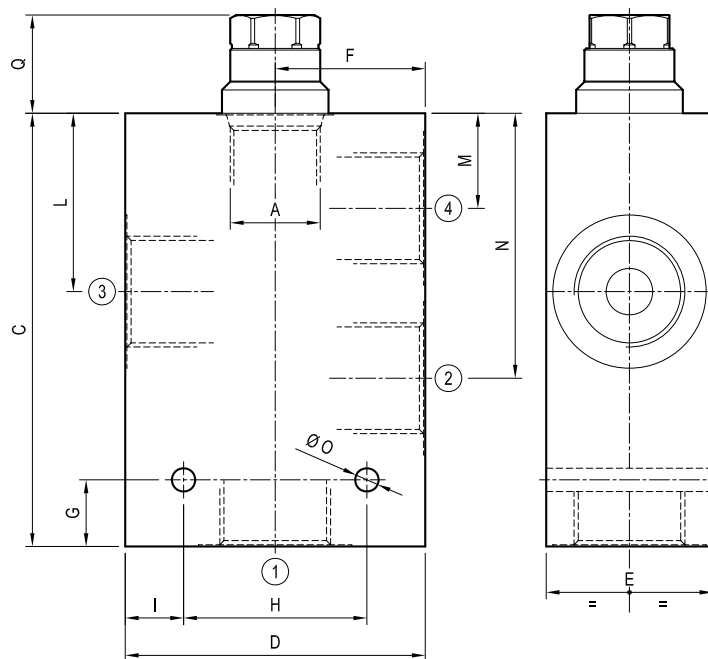
Common cavity

Cartridge style in manifold

VRLA-S-C

OU.06 - K - 00 - Y - Z - W

Dimensions



Technical data

Max inlet flow:	up to 230 l/min	(60 gpm)
Max priority flow:	up to 170 l/min	(45 gpm)
Max operating pressure for steel body:	350 bar	(5000 psi)
Max operating pressure for aluminium body:	210 bar	(3000 psi)

To order only manifold see data sheet RE 18325-85

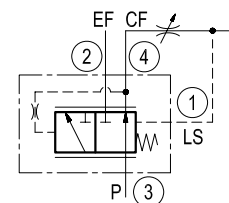
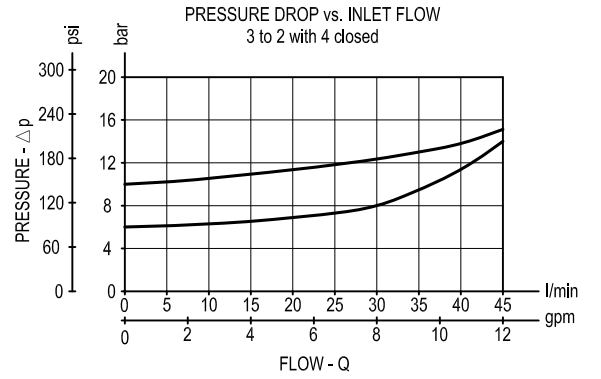
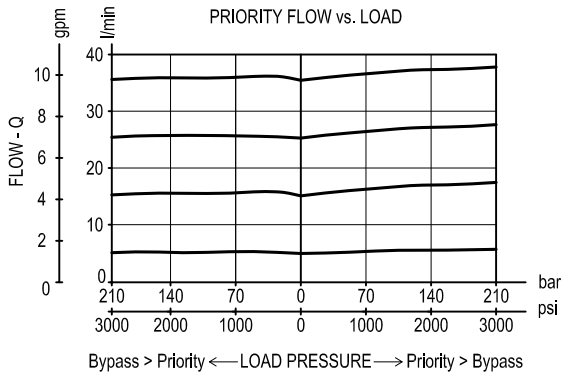


Table "Y"

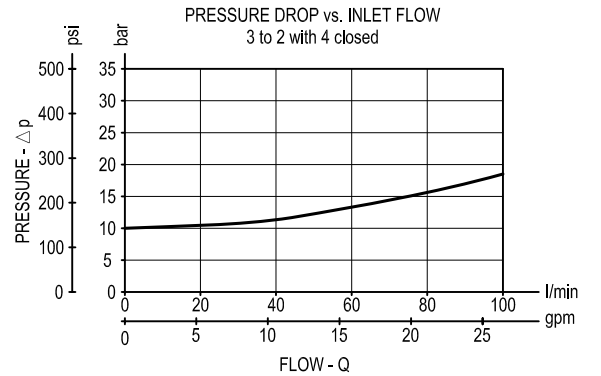
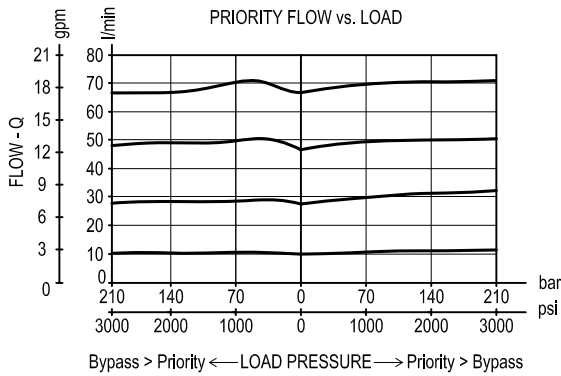
Cavity	Y	PORT SIZE 1 - 2 - 3 - 4	Inlet Flow l/min (gpm)	Priority Flow l/min (gpm)	DIMENSIONS mm (Inches)												
					C	D	E	F	G	H	I	L	M	N	O	Q	R
SIZE 08																	
SIZE 10	09	G 1/4	45 (12)	40 (11)	80 (3,15)	65 (2,56)	35 (1,38)	32,5 (1,28)	10 (0,39)	50 (1,97)	7,5 (0,30)	35 (1,38)	18 (0,71)	50 (1,97)	6,5 (0,26)	36,5 (1,44)	
	02	G 3/8			80 (3,15)	65 (2,56)	35 (1,38)	32,5 (1,28)	10 (0,39)	50 (1,97)	7,5 (0,30)	35 (1,38)	18 (0,71)	50 (1,97)	6,5 (0,26)		
SIZE 12	04	G 3/4	100 (26)	80 (21)	125 (4,92)	80 (3,15)	40 (1,58)	40 (1,58)	20 (0,79)	55 (2,17)	12,5 (0,49)	53,5 (2,11)	28,5 (1,12)	79,5 (3,13)	7 (0,28)	29 (1,14)	
	05	G 1			130 (5,12)	90 (3,54)	50 (1,97)	45 (1,77)	20 (0,79)	55 (2,17)	17,5 (0,69)	53,5 (2,11)	28,5 (1,12)	79,5 (3,13)	7 (0,28)		
SIZE 16	04	G 3/4	160 (42)	140 (37)	130 (5,12)	90 (3,54)	50 (1,97)	45 (1,77)	20 (0,79)	60 (2,36)	15 (0,59)	54,5 (2,15)	26 (1,02)	83 (3,27)	10,5 (0,41)	31,5 (1,24)	
	05	G 1			130 (5,12)	100 (3,94)	50 (1,97)	50 (1,97)	20 (0,79)	60 (2,36)	20 (0,79)	54,5 (2,15)	26 (1,02)	83 (3,27)	10,5 (0,41)		
SIZE 20	05	G1	230 (60)	170 (45)	175 (6,89)	120 (4,72)	60 (2,36)	60 (2,36)	18 (0,71)	75 (2,95)	22,5 (0,89)	72,5 (2,85)	32 (1,26)	114,5 (4,51)	11 (0,43)	50 (1,97)	
	06	G1 1/4			175 (6,89)	120 (4,72)	60 (2,36)	60 (2,36)	18 (0,71)	75 (2,95)	22,5 (0,89)	72,5 (2,85)	32 (1,26)	114,5 (4,51)	11 (0,43)		

Performance graphs

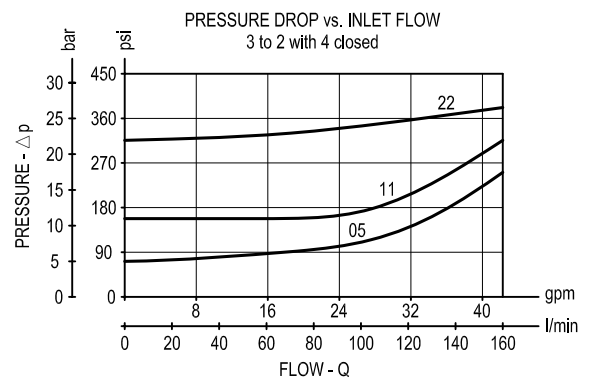
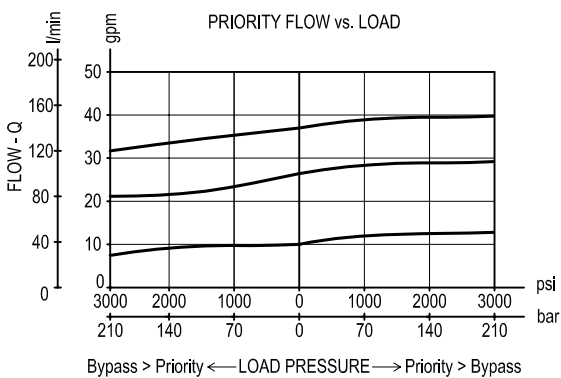
SIZE 10



SIZE 12



SIZE 16



SIZE 20

