

Logic element, pressure compensator, with dynamic load sense

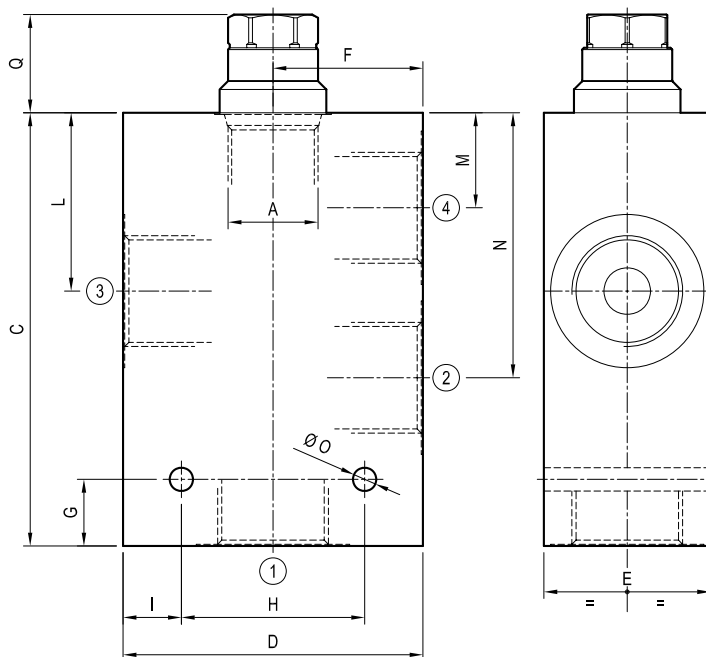
Common cavity

Cartridge style in manifold

VRLA-D-C

OU.05 - K - X - Y - Z - W

Dimensions



Technical data

Max inlet flow:	up to 230 l/min	(60 gpm)
Max priority flow:	up to 170 l/min	(45 gpm)
Max operating pressure for steel body:	350 bar	(5000 psi)
Max operating pressure for aluminium body:	210 bar	(3000 psi)

To order only manifold see data sheet RE 18325-85

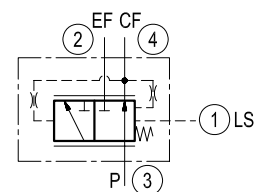


Table "Y"

Cavity	Y	PORT SIZE 1 - 2 - 3 - 4	Inlet Flow l/min (gpm)	Priority Flow l/min (gpm)	DIMENSIONS mm (Inches)												
					C	D	E	F	G	H	I	L	M	N	O	Q	R
SIZE 08																	
SIZE 10	09	G 1/4	45 (12)	40 (11)	80 (3,15)	65 (2,56)	35 (1,38)	32,5 (1,28)	10 (0,39)	50 (1,97)	7,5 (0,30)	35 (1,38)	18 (0,71)	50 (1,97)	6,5 (0,26)	36,5 (1,44)	
	02	G 3/8			80 (3,15)	65 (2,56)	35 (1,38)	32,5 (1,28)	10 (0,39)	50 (1,97)	7,5 (0,30)	35 (1,38)	18 (0,71)	50 (1,97)	6,5 (0,26)		
SIZE 12	04	G 3/4	100 (26)	80 (21)	125 (4,92)	80 (3,15)	40 (1,58)	40 (1,58)	20 (0,79)	55 (2,17)	12,5 (0,49)	53,5 (2,11)	28,5 (1,12)	79,5 (3,13)	7 (0,28)	30 (1,18)	
	05	G 1			130 (5,12)	90 (3,54)	50 (1,97)	45 (1,77)	20 (0,79)	55 (2,17)	17,5 (0,69)	53,5 (2,11)	28,5 (1,12)	79,5 (3,13)	7 (0,28)		
SIZE 16	04	G 3/4	160 (42)	140 (37)	130 (5,12)	90 (3,54)	50 (1,97)	45 (1,77)	20 (0,79)	60 (2,36)	15 (0,59)	54,5 (2,15)	26 (1,02)	83 (3,27)	10,5 (0,41)	up to 70 (2,76)	
	05	G 1			130 (5,12)	100 (3,94)	50 (1,97)	50 (1,97)	20 (0,79)	60 (2,36)	20 (0,79)	54,5 (2,15)	26 (1,02)	83 (3,27)	10,5 (0,41)		
SIZE 20	05	G1	230 (60)	170 (45)	175 (6,89)	120 (4,72)	60 (2,36)	60 (2,36)	18 (0,71)	75 (2,95)	22,5 (0,89)	72,5 (2,85)	32 (1,26)	114,5 (4,51)	11 (0,43)	50 (1,97)	
	06	G1 1/4			175 (6,89)	120 (4,72)	60 (2,36)	60 (2,36)	18 (0,71)	75 (2,95)	22,5 (0,89)	72,5 (2,85)	32 (1,26)	114,5 (4,51)	11 (0,43)		

Cartridge style

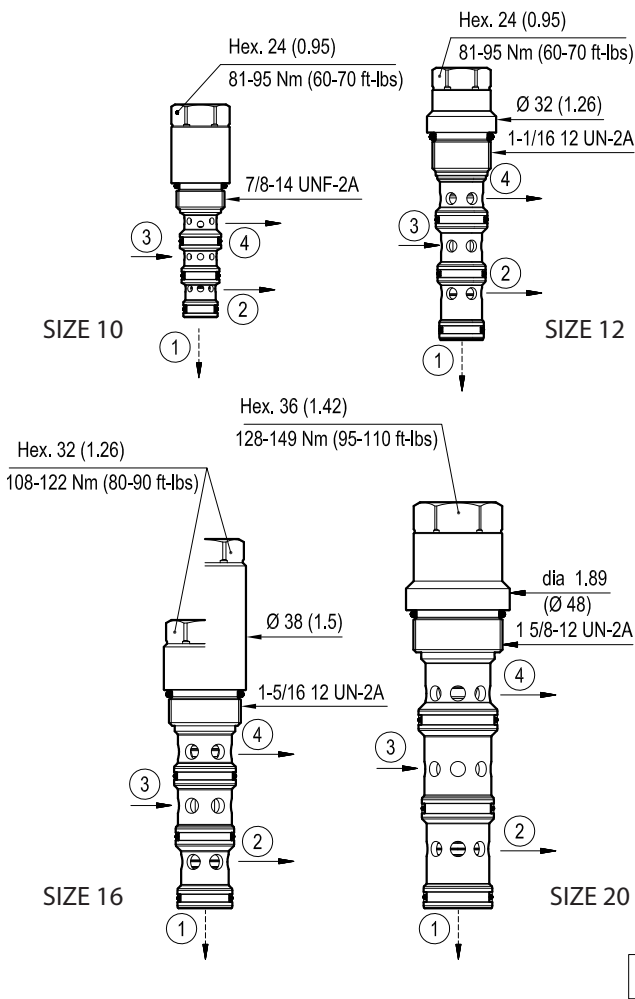


Table "K"

						K	
CARTRIDGE CODE	04	84	10	X	85	Z	VRLA-10A-D
	04	84	10	X	57	Z	VRLA-12A-D
	04	84	10	X	27	Z	VRLA-16A-D
	04	84	10	X	58	Z	VRLA-20A-D

X	LS Orifice Diameter mm (inches)
05	0.5 (0.02)
06	0.6 (0.02) only for SIZE 10 and 16
07	0.7 (0.03) only for SIZE 12
08	0.8 (0.03) only for SIZE 10, 16 and 20
09	0.9 (0.04) only for SIZE 10
10	1 (0.04) only for SIZE 12, 16 and 20

CARTRIDGE TECHNICAL DATA	
Common cavity: CA-10A-4N / CA-12A-4N / CA-16A-4N / CA-20A-4N	
For other details see data sheet RE 18321-90, RE 18321-83, RE 18321-84 and RE 18321-85	

[mm (inches)]

Table "Z"

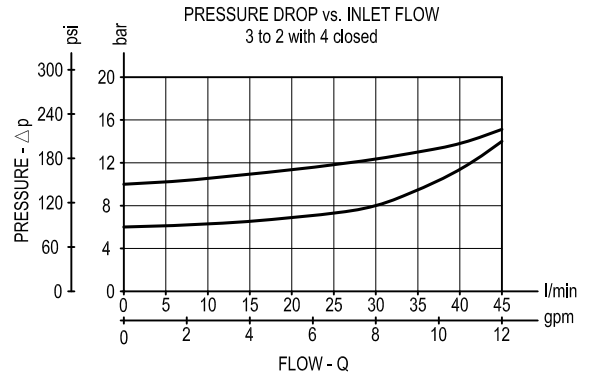
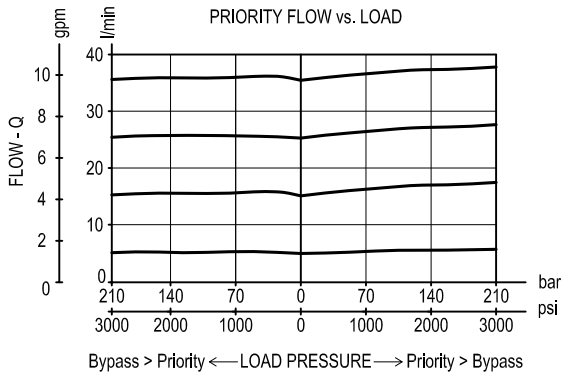
Z	SPRINGS														
	SIZE 08			SIZE 10			SIZE 12			SIZE 16			SIZE 20		
	Bias spring bar(psi)			Bias spring bar(psi)			Bias spring bar(psi)			Bias spring bar(psi)			Bias spring bar(psi)		
05				*5,5±20% (80)±20%						5,5±20% (80)±20%					
10				**10±15% (145)±15%			10±15% (145)±15%								
11										11±15% (160)±15%					
12													12±15% (175)±15%		
22										22±15% (320)±15%					

* only for X=06 and X=09 versions

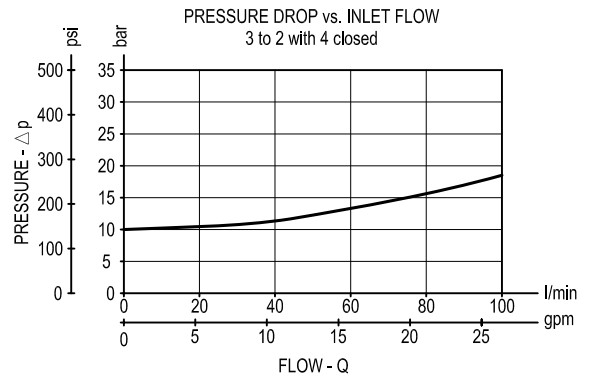
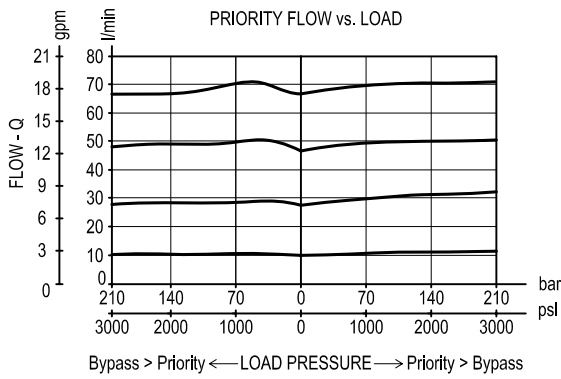
** only for X=05 and X=08 versions

Performance graphs

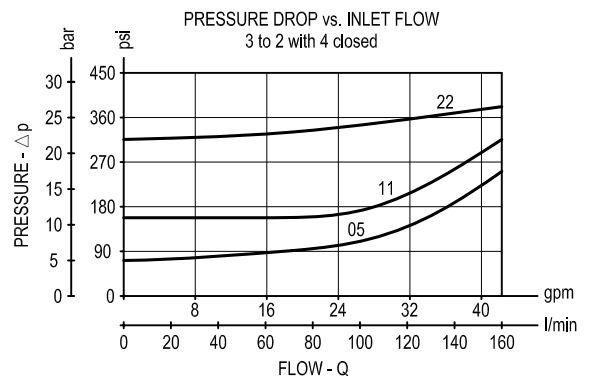
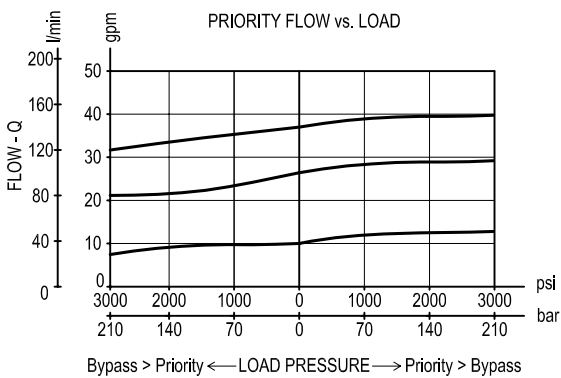
SIZE 10



SIZE 12



SIZE 16



SIZE 20

