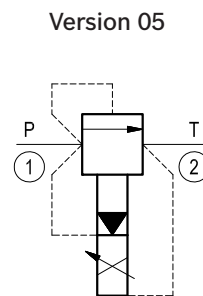
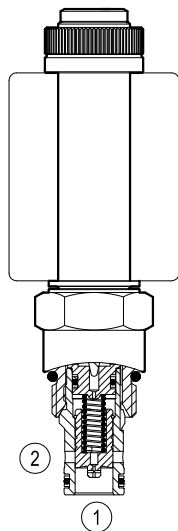


## Proportional valves pilot operated relief

Common cavity, Size 10

VEP-5B-2S-10A-P

OD.94.05.36 - Y - Z



### General

Weight	kg (lbs)	0.3 (0.66)
Installation orientation		Optional
Ambient temperature range	°C (°F)	-30 to 60 (-22 to 140)

### Hydraulic

Max. operating pressure	bar (psi)	350 (5000)
Flow range	l/min.(gpm)	7-120 (2-32)
Max. internal leakage	cm <sup>3</sup> /min. (cu.in./min.)	200 (12)
Fluid temperature range	°C (°F)	-20 to 80 (-4 to 176)
Fluids		Mineral-based or synthetics with lubricating properties at viscosities of 15 to 380 mm <sup>2</sup> /s (cSt)
Installation torque	Nm (ft-lbs)	44-56 (33-41)
Filtration		Nominal value max. 10µm (NAS 8) ISO 4406 19/17/14
Cavity		CA-10A-2N see Re 18325-70
Seal kit	code material no.	RG10A2010530100 R901111366
Seal kit coil	code material no.	RG19A1PNBR7010 R934003964
Other technical data		See data sheet RE 18350-50

(\* ) at 20% of pressure setting. Oil at 46 cSt.

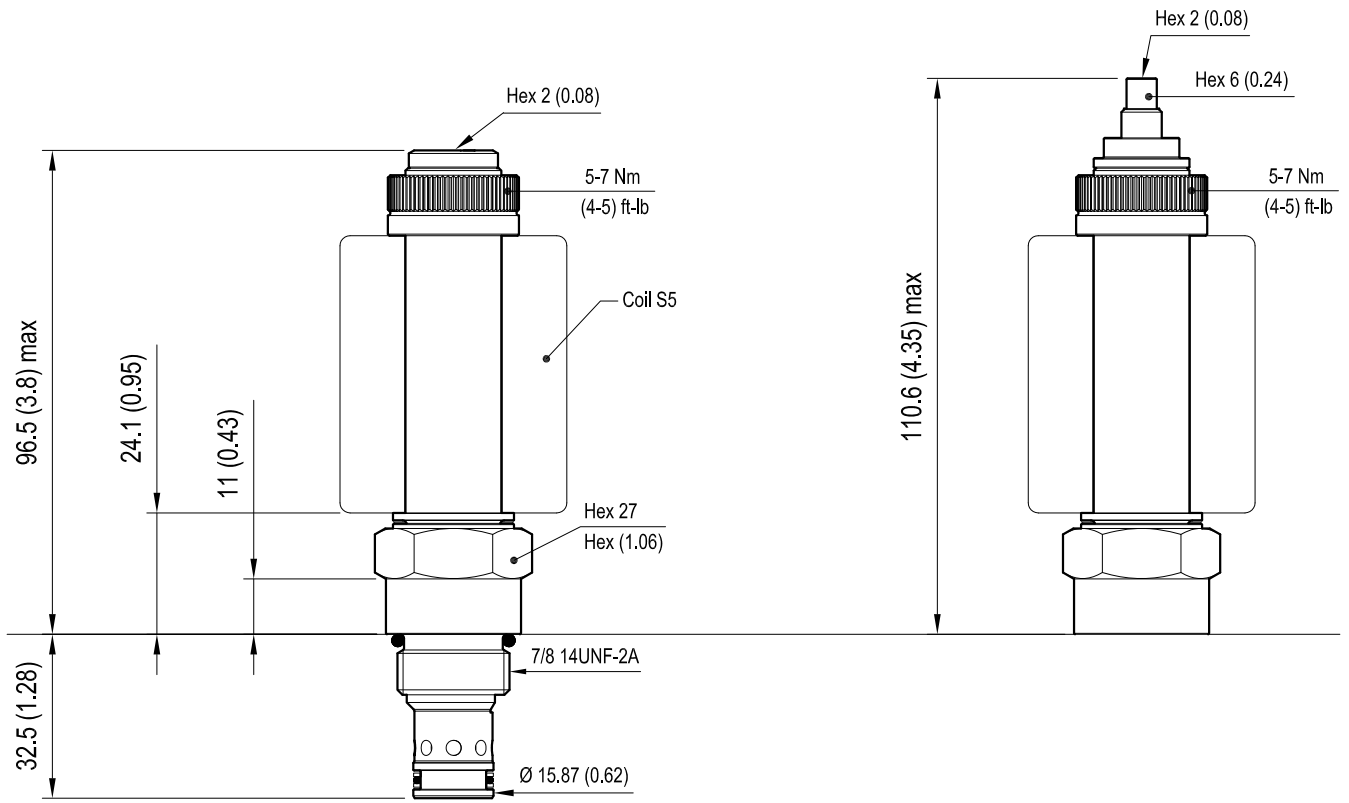
### Electrical

Type of voltage	DC voltage
Coil type	S5
Supply voltage	12 DC
Nominal voltage	± 10%
Power consumption	W 23
Duty cycle	% 100
Type of protection	See data sheet RE 18325-90

Note: Coils must be ordered separately.

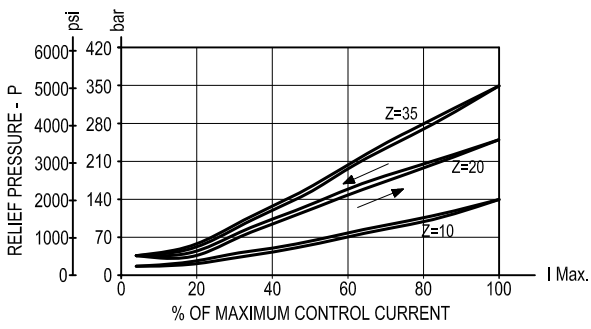
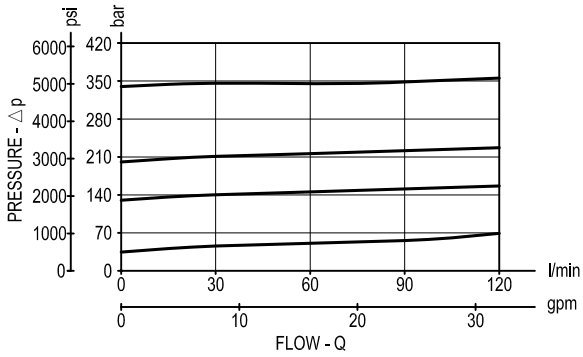
# Dimensions

## Proportional valves pilot operated relief



[ mm (Inches) ]

### Performance graphs



		I	P bar (psi)	Coils
Z=10	I min:	0.2 A	15 (218)	12 DC
	I max:	1.5 A	140 (2030)	12 DC
Z=20	I min:	0.15 A	30 (435)	12 DC
	I max:	1.7 A	250 (3625)	12 DC
Z=35	I min:	0.2 A	30 (435)	12 DC
	I max:	1.7 A	350 (5075)	12 DC
PMW Frequency: 120-150 Hz				
Hysteresis: < 5%				

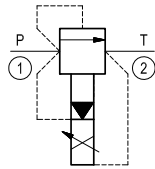
Note (1): It is recommended to use coil 12 DC.

Note (2): It is recommended to bleed air carefully before operation.

### Ordering code

**OD.94 05 36 Y Z**

Proportional valves pilot operated relief

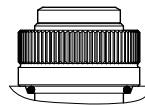


Common cavity: CA-10A-2N

	Operating range			
	Pressure range bar (psi)	Voltage V	I Min. A (±10%)	I Max. A (±10%)
= 10	15-140 (220-2000)	12	0.18	1.6
= 20	30-250 (440-3600)	12	0.13	1.5
= 35	30-350 (440-5000)	12	0.28	1.4

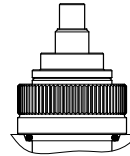
standard type

03 =



knob style manual override

04 =



Type	Material number
OD940536031000	R934001536
OD940536032000	R934001537
OD940536033500	R934001538
OD940536041000	R934001539
OD940536042000	R934001540
OD940536043500	R934003877

Type	Material number