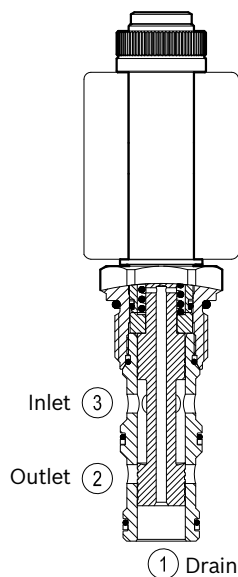


# Proportional valves not compensated flow regulator

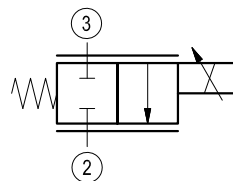
Common cavity, Size 12

VEP-5A-2Q-14

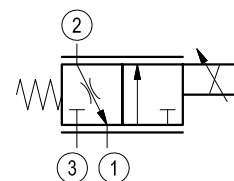
OD.92 - X - 12 - Y - 00



Version 03



Version 05



Version 03: port 1 not used.

## General

Weight	kg (lbs)	0.39 (0.86)
Installation orientation		Optional
Ambient temperature range	°C (°F)	-30 to 60 (-22 to 140)
Salt spray test to DIN EN ISO 9227:2017-07		500h

## Hydraulic

Max. operating pressure	bar (psi)	210 (3000)
Flow range	l/min.(gpm)	5-60 (1-16)
Max. internal leakage (*)	cm <sup>3</sup> /min. (cu.in./min.)	190 (12)
Fluid temperature range	°C (°F)	-20 to 80 (-4 to 176)
Fluids		Mineral-based or synthetics with lubricating properties at viscosities of 15 to 380 mm <sup>2</sup> /s (cSt)
Installation torque	Nm (ft-lbs)	54-66 (40-49)
Recommended degree of fluid contamination		Nominal value max. 10µm (NAS 8) ISO 4406 19/17/14
Cavity		CA-12A-3N see RE 18325-70
Lines bodies and standard assemblies		Please refer to section "Hydraulic integrated circuit" or consult factory
Seal kit	code material no.	RG12A3010520100 R930000941
Seal kit coil	code material no.	RG19A1PNBR7010 R934003964
Other technical data		See data sheet RE 18350-50

(\*) Measured at 210 bar (3000 psi). Oil at 46 cSt.

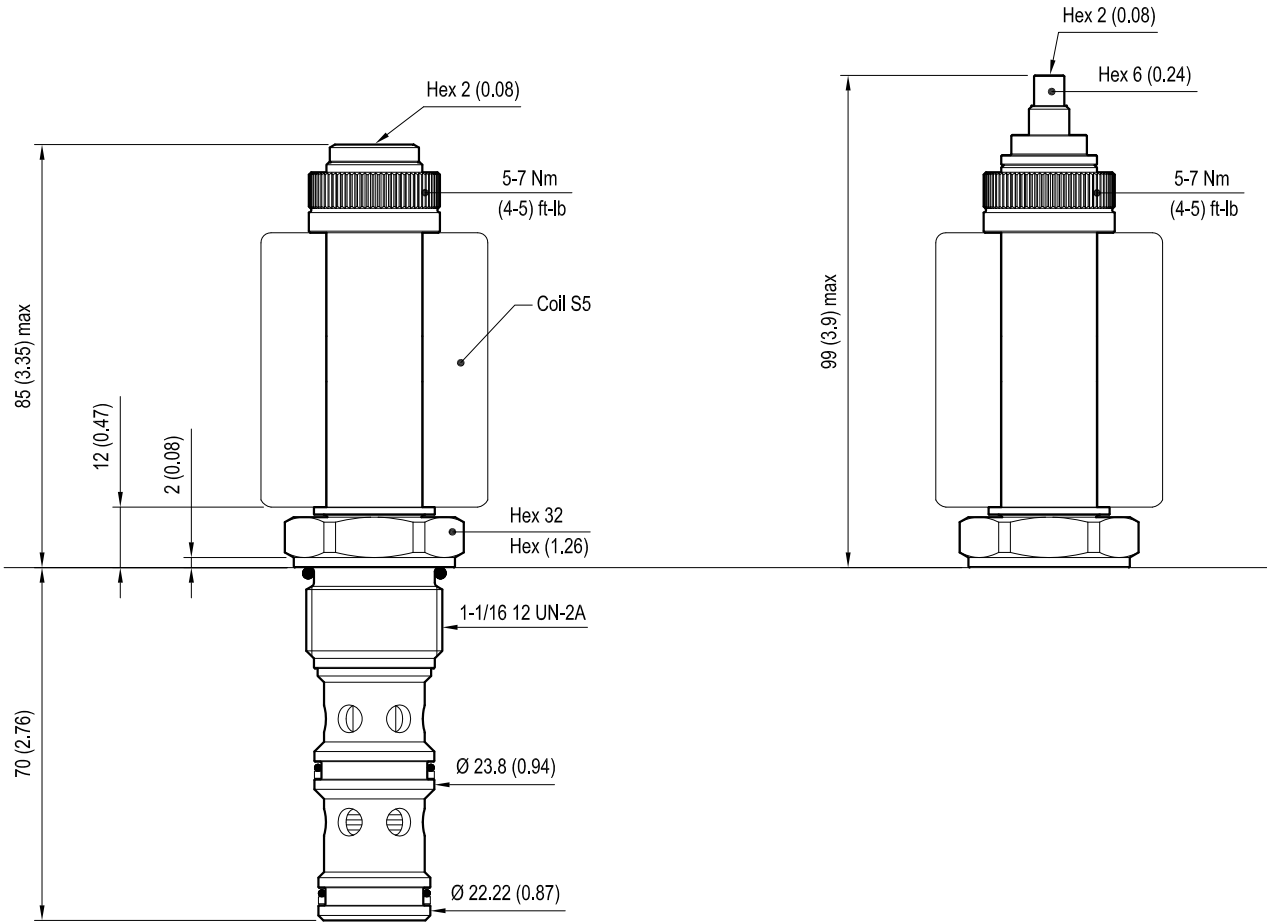
## Electrical

Type of voltage	DC voltage
Coil type	S5
Supply voltage	12 DC
Nominal voltage	± 10%
Power consumption	W 23
Duty cycle	% 100
Type of protection	See data sheet RE 18325-90

Note: Coils must be ordered separately.

# Dimensions

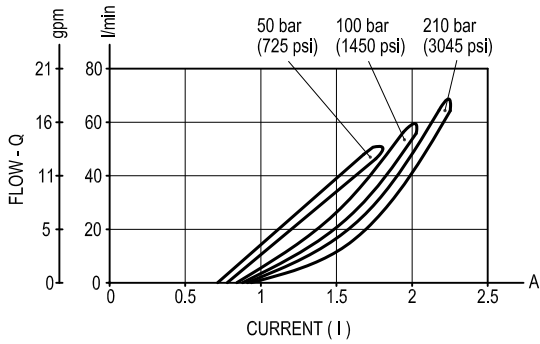
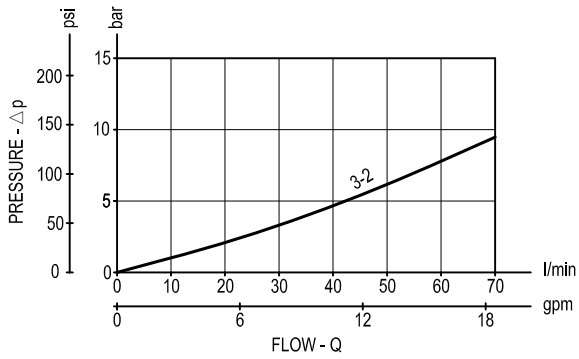
## Proportional valves not compensated flow regulator



Version 03  
PORT NOT USED

mm (Inches)

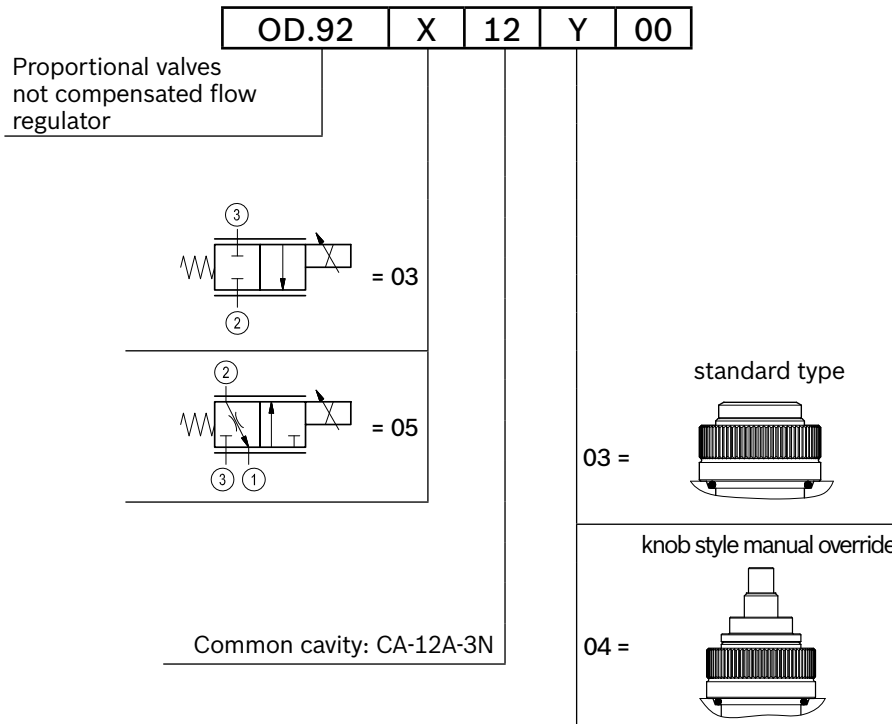
### Performance graphs



		I	P bar (psi)	Coils
Z=00	I min:	0.75 A	210 (3000)	12 DC
	I max:	2.1 A	210 (3000)	12 DC
PMW Frequency: 150-180 Hz				
Hysteresis: < 5%				

Note (1): It is recommended to use coil 12 DC.  
 Note (2): Performance using coil without diode.

### Ordering code



Type	Material number	Type	Material number
OD920312030000	R934001514		
OD920312040000	R934001515		
OD920512030000	R934001523		
OD920512040000	R934003910		