

Counterbalance, relief compensated, poppet type

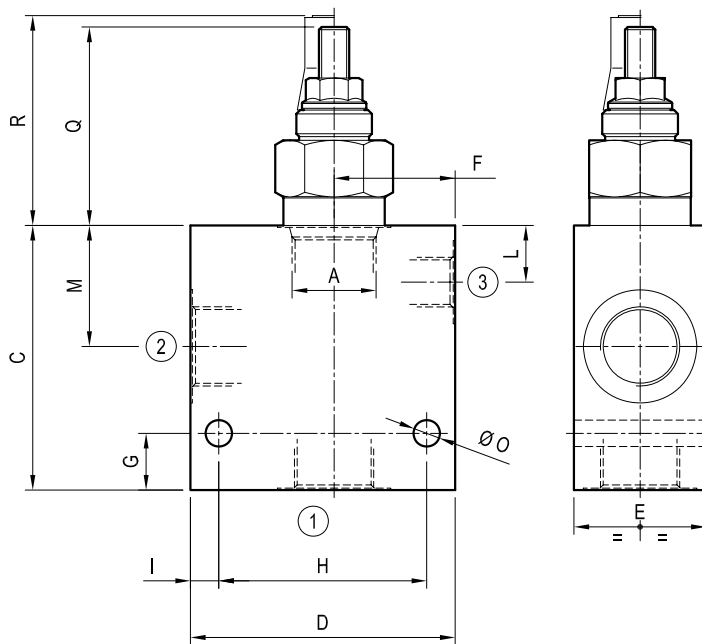
Common cavity

Cartridge style in manifold

VBSP-C

OY.03 - K - X - Y - Z - W

Dimensions



Technical data

Max flow:	up to 320 l/min	(85 gpm)
Max operating pressure for steel body:	350 bar	(5000 psi)
Max operating pressure for aluminium body:	210 bar	(3000 psi)

To order only manifold see data sheet RE 18325-85

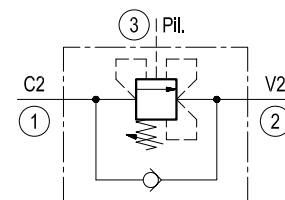
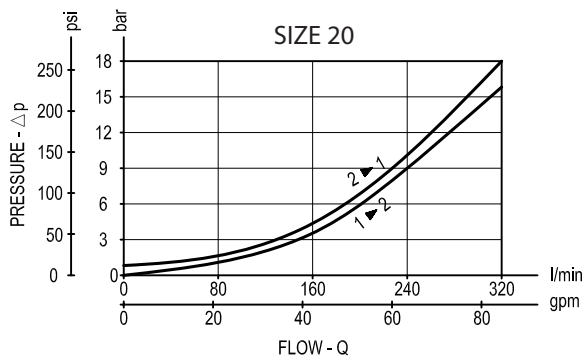
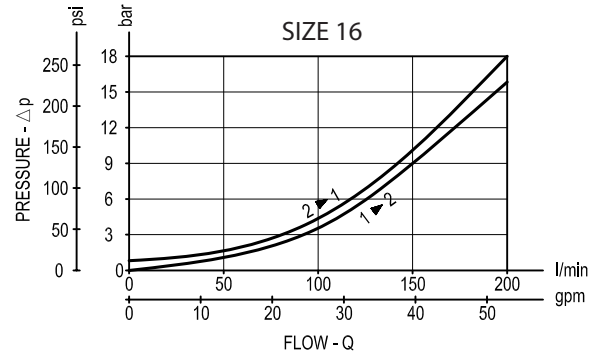
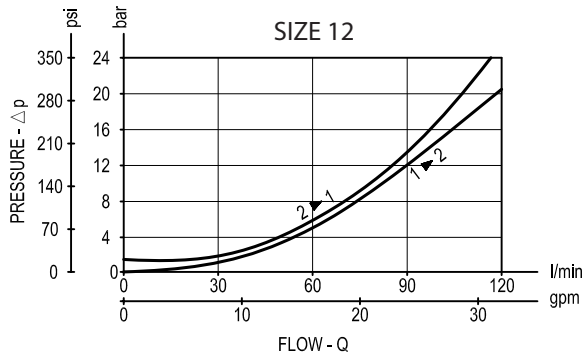
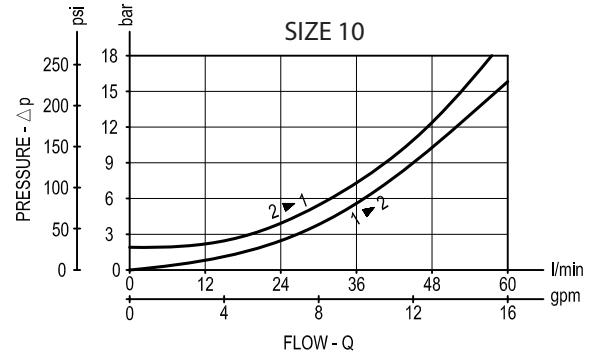
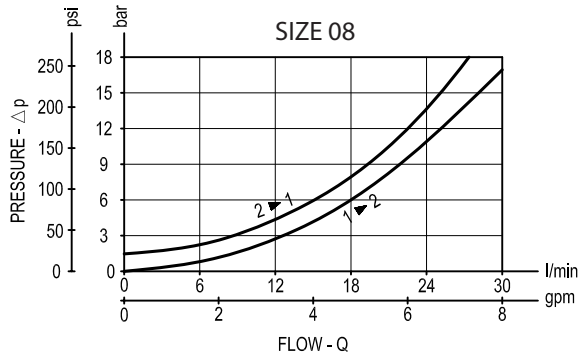


Table "Y"

Cavity	Y	PORT SIZE		Max Flow l/min (gpm)	DIMENSIONS mm (Inches)												
		1 - 2	3		C	D	E	F	G	H	I	L	M	N	O	Q	R
SIZE 08	09	G 1/4	G 1/4	30 (8)	60 (2.36)	60 (2.36)	30 (1.18)	30 (1.18)	15 (0.59)	45 (1.77)	7.5 (0.3)	13 (0.51)	27 (1.06)		7 (0.28)	55 (2.17)	64 (2.52)
	02	G 3/8	G 1/4		60 (2.36)	60 (2.36)	30 (1.18)	30 (1.18)	15 (0.59)	45 (1.77)	7.5 (0.3)	13 (0.51)	27 (1.06)		7 (0.28)		
SIZE 10	02	G 3/8	G 1/4	60 (16)	70 (2.76)	60 (2.36)	35 (1.38)	30 (1.18)	15 (0.59)	45 (1.77)	7.5 (0.30)	15 (0.59)	32 (1.26)		7 (0.28)	53 (2.09)	59 (2.32)
	03	G 1/2	G 1/4		70 (2.76)	70 (2.76)	35 (1.38)	32 (1.26)	15 (0.59)	55 (2.17)	7.5 (0.30)	15 (0.59)	32 (1.26)		7 (0.28)		
SIZE 12	03	G 1/2	G 1/4	120 (32)	80 (3.15)	75 (2.95)	40 (1.58)	35 (1.38)	15 (0.59)	55 (2.17)	10 (0.39)	24 (0.95)	42 (1.65)		7 (0.28)	61 (2.4)	67 (2.64)
	04	G 3/4	G 1/4		90 (3.54)	75 (2.95)	40 (1.58)	35 (1.38)	15 (0.59)	55 (2.17)	10 (0.39)	24 (0.95)	42 (1.65)		9 (0.35)		
SIZE 16	04	G 3/4	G 1/4	200 (53)	90 (3.54)	80 (3.15)	50 (1.97)	38 (1.50)	22 (0.87)	60 (2.36)	10 (0.39)	18.5 (0.73)	39 (1.54)		9 (0.35)	73 (2.87)	80 (3.15)
	05	G 1	G 1/4		90 (3.54)	90 (3.54)	50 (1.97)	40 (1.58)	22 (0.87)	70 (2.76)	10 (0.39)	18.5 (0.73)	39 (1.54)		9 (0.35)		
SIZE 20	05	G 1	G 1/4	320 (85)	110 (4.33)	100 (3.94)	60 (2.36)	45 (1.77)	25 (0.98)	75 (2.95)	12.5 (0.49)	21 (0.83)	51 (2.01)		11 (0.43)	65 (2.56)	72.5 (2.85)
	06	G 1 1/4	G 1/4		110 (4.33)	100 (3.94)	60 (2.36)	45 (1.77)	25 (0.98)	75 (2.95)	12.5 (0.49)	21 (0.83)	51 (2.01)		11 (0.43)		

Performance graphs



Ordering code

OY.03	K	X	Y	Z	W
-------	---	---	---	---	---

Manifold with counterbalance, relief compensated, poppet type

Cartridge style - Common cavity (see table K on page 2)

Cartridge style - Pilot ratio (see table X on page 2)

Manifold material

= 00 Aluminium manifold

= S0 Steel manifold

Settings - Springs (see table Z on page 2)

Manifold style - Dimensions and port sizes (see table Y on page 1)

Preferred types (readily available)

Type	Material number
OY0304030220S0	R934001351
OY0304030235S0	R934001356
OY0309030320S0	R934001363
OY0309030335S0	R934001367
OY0308030420S0	R934001368
OY0308030435S0	R934001396
OY0310030520S0	R934001399
OY0310030535S0	R934001398
OY0313030620S0	R934001400
OY0313030635S0	R934001401

Type	Material number

Further types available by request