

Flangeable elements with single or double secondary pressure relief valves and anti-cavitation function

EDCM/EDCMF-VM

RE 18301-45

Edition: 02.2016

Replaces: 07.2012



Description

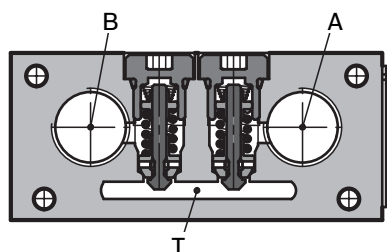
These modular secondary elements can be flange mounted on top of the EDC elements machined with the interfacing surface.

They let through free flow to the A (or B) port until pressure increases and reaches the selected pressure setting; then they release flow into the Tank channels.

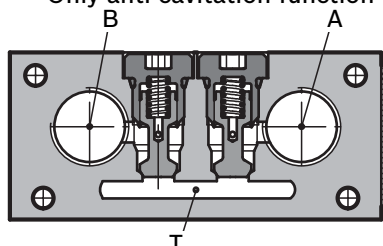
The direct acting relief cartridges are designed for quick response and stable pressure control; they also incorporate a reverse flow check for anti-cavitation.

With a body made of zinc plated cast iron, these elements combine secondary pressure relief and dual cross-over, with anti-cavitation function.

Pressure relief valves and anti-cavitation function



Only anti-cavitation function



Technical data

General

Weight	kg (lbs)	0.6 (1.3)
Ambient Temperature	°C (°F)	-20....+50 (-4....+122) (NBR seals)

Hydraulic

Maximum pressure	bar (psi)	310 (4500)
Maximum flow	l/min (gpm)	30 (7.93)
Hydraulic fluid		Mineral oil based hydraulic fluids HL (DIN 51524 part 1). Mineral oil based hydraulic fluids HLP (DIN 51524 part 2). For use of environmentally acceptable fluids (vegetable or polyglycol base) please consult us.
Fluid Temperature	°C (°F)	-20....+80 (-4....+176) (NBR)
Permissible degree of fluid contamination		ISO 4572: $\beta_{x \geq 75} X=10 \dots 12$ ISO 4406: class 19/17/14 NAS 1638: class 8
Viscosity range	mm ² /s	5....420

Note

For applications with different specifications consult us

Ordering details

01	02	03	04	05	06	07
L	85	65			00	0

Family		
01	Directional Valve	L

Model		
02	Flangeable element for EDC valves	85

Type		
03	Flangeable elements with secondary pressure relief valves and anti-cavitation function	65

Configuration		
04	Cavity for cartridge for both A and B ports	01AB
	Cavity for cartridge for port A only	010A
	Cavity for cartridge for port B only	010B

Cartridge for A side		
05	Relief valve setting A side Q = 5 l/min (1.3gpm) Ex. Setting at 5 l/min 20 bar (see table below)	A...X
	Check valve (on A side)	9

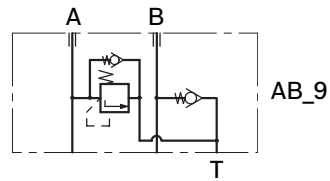
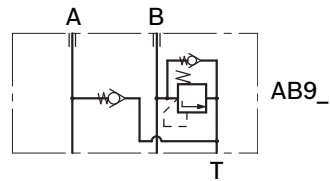
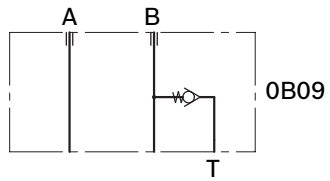
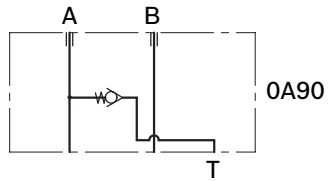
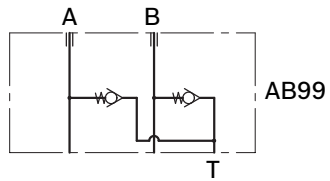
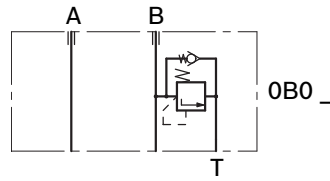
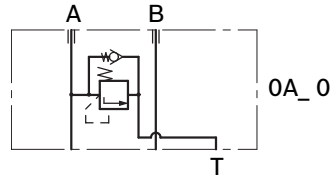
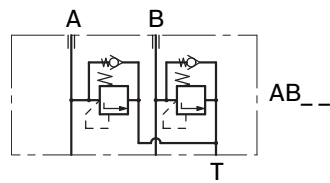
Cartridge for B side		
06	Relief valve setting A side Q = 5 l/min (1.3gpm) Ex. Setting at 5 l/min 20 bar (see table below)	A...X
	Check valve (on B side)	9

Ports		
07	G 3/8 DIN 3852	0
	G 1/2 DIN 3852	2
	3/4" - 16 UNF - SAE8	3
	Machined for interfacing to modular elements	M

A	B	C	D	E	F	G	H	I	J	K	L
20	30	40	50	60	70	80	90	100	110	120	130
bar	bar	bar	bar	bar	bar	bar	bar	bar	bar	bar	bar
290	435	580	725	870	1015	1160	1305	1450	1595	1740	1885
psi	psi	psi	psi	psi	psi	psi	psi	psi	psi	psi	psi

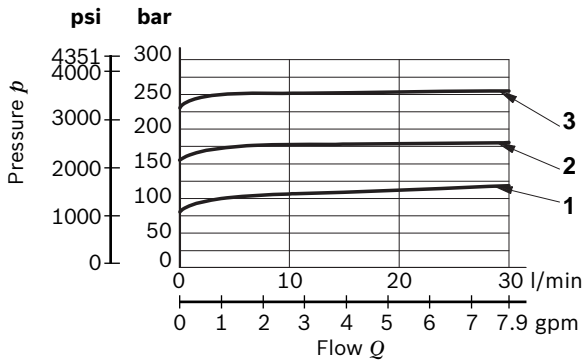
M	N	O	P	Q	R	S	T	U	V	W	X
140	150	160	170	180	190	200	210	220	230	240	250
bar	bar	bar	bar	bar	bar	bar	bar	bar	bar	bar	bar
2030	2175	2320	2465	2611	2756	2901	3046	3191	3336	3481	3626
psi	psi	psi	psi	psi	psi	psi	psi	psi	psi	psi	psi

Symbols



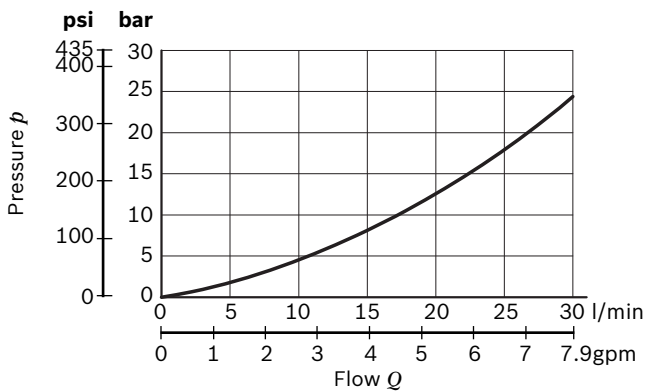
Characteristic curves

Pressure relieving



Example	Curve no.
Example of setting 100 bar - 5l/min (1450psi - 1.32gpm)	1
Example of setting 150 bar - 5l/min (2175psi - 1.32gpm)	2
Example of setting 250 bar - 5l/min (3626psi - 1.32gpm)	3

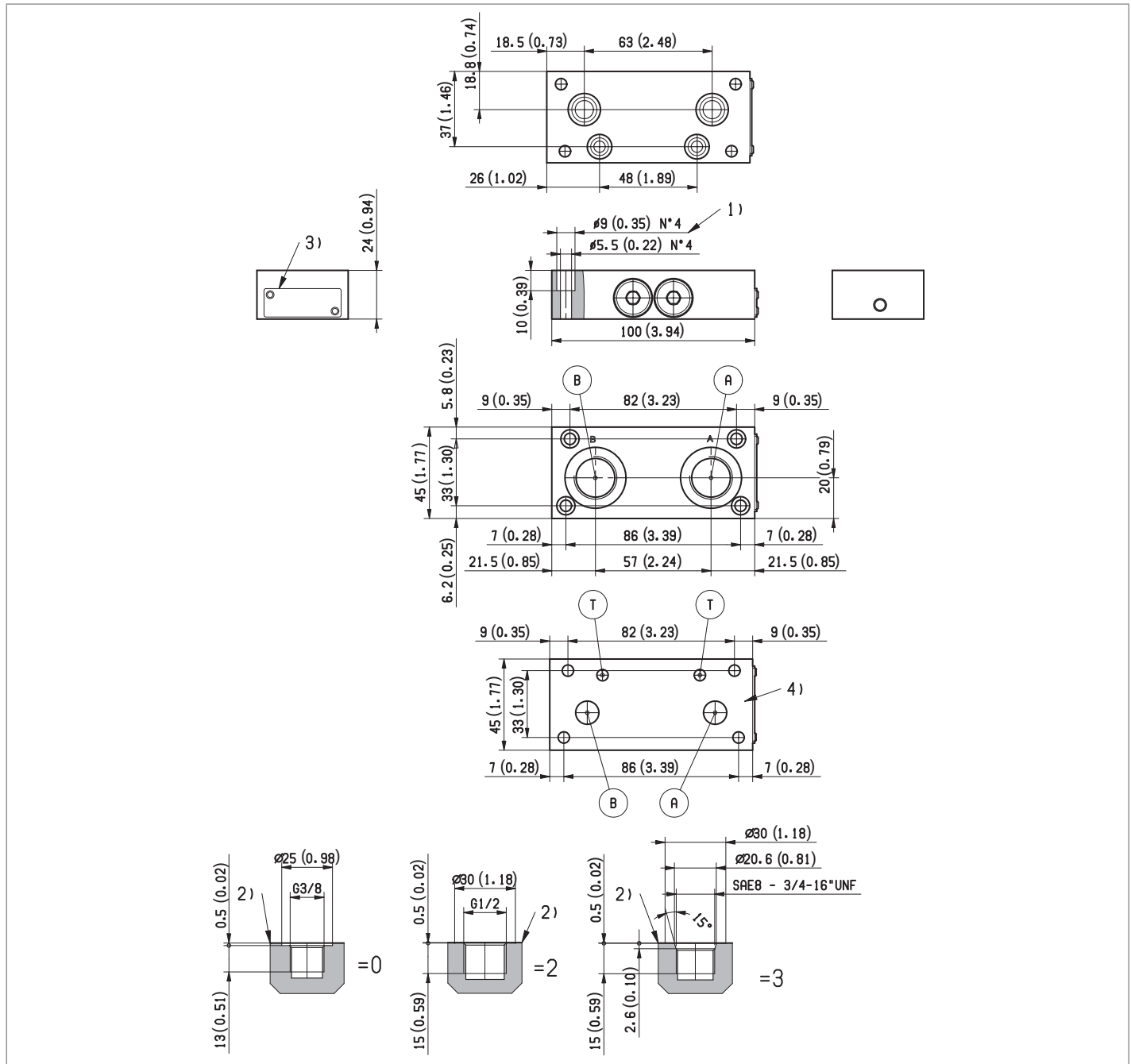
Pressure drop (anticavitation)



Pressure drop misured with EDC valve
 L8580_2S9000000M000

Measured with hydraulic fluid ISO-VG32 at $45^{\circ} \pm 5^{\circ} \text{C}$
 ($113^{\circ} \pm 9^{\circ} \text{F}$); ambient temperature 20°C (68°F).

External dimensions and fittings



- 1 Four through holes 5.5mm (0.217 inch) for screws and tightening torques see data sheet RE 18301-90.
- 2 A and B ports.

- 3 Identification label.
- 4 Machined for interfacing to modular elements (=M ports version).

Bosch Rexroth Oil Control S.p.A.
 Oleodinamica LC Division
 Via Artigianale Sedrio, 12
 42030 Vezzano sul Crostolo
 Reggio Emilia - Italy
 Tel. +39 0522 601 801
 Fax +39 0522 606 226 / 601 802
 compact-hydraulics-cdv@boschrexroth.com
 www.boschrexroth.com/compacthydraulics

© This document, as well as the data, specifications and other information set forth in it, are the exclusive property of Bosch Rexroth Oil Control S.p.a.. It may not be reproduced or given to third parties without its consent. The data specified above only serve to describe the product. No statements concerning a certain condition or suitability for a certain application can be derived from our information. The information given does not release the user from the obligation of own judgment and verification. It must be remembered that our products are subject to a natural process of wear and aging. Subject to change.