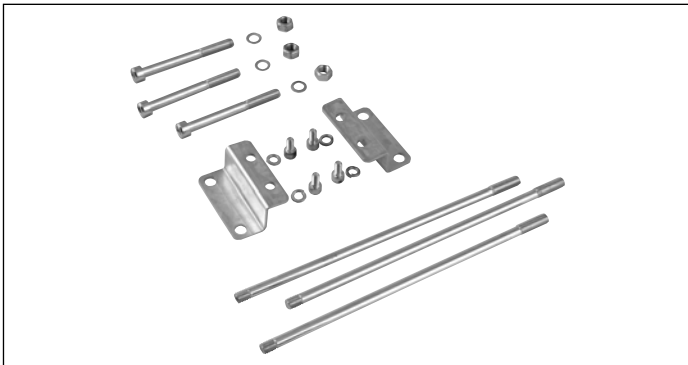


Accessories and fixation elements

RE 18301-90

Edition: 03.2021

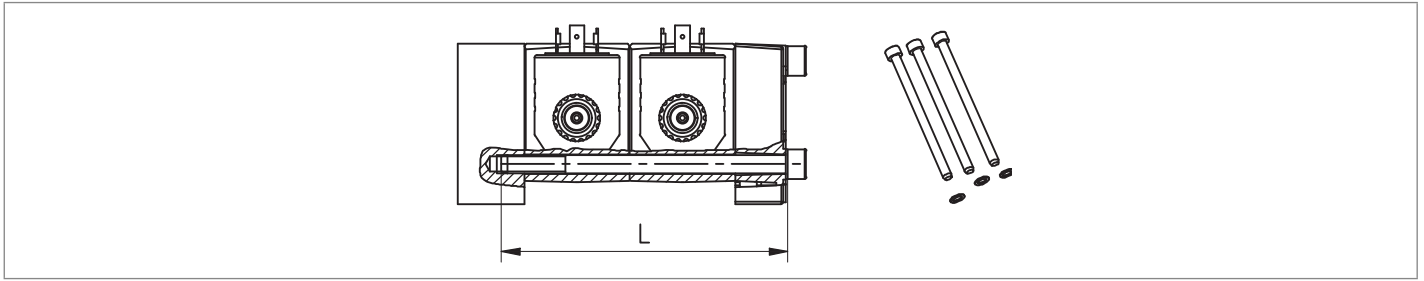
Replaces: 05.2016



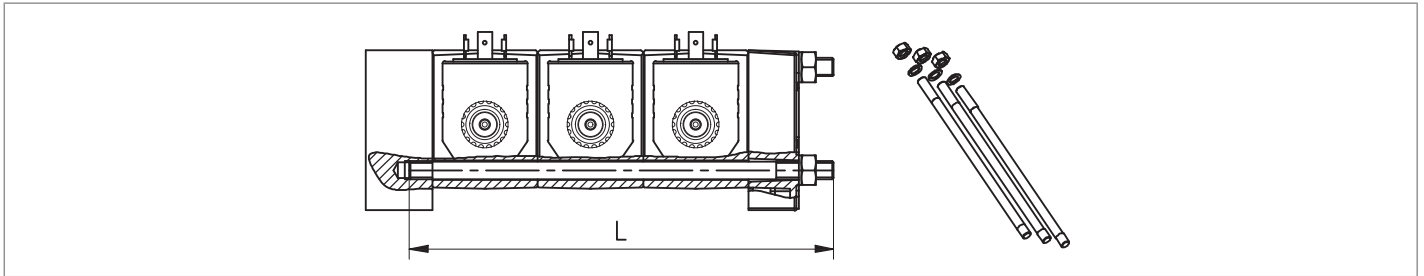
Contents

| | |
|---|---|
| Assembly of directional elements | 2 |
| Fitting of mounting brackets | 3 |
| Assembling of flangeable element | 3 |
| Kit for spacers between elements | 4 |
| Flow restrictor | 4 |
| Series circuits | 5 |
| Hydraulic Symbol with intermediate element between A and B lines | 5 |

Assembly of directional elements



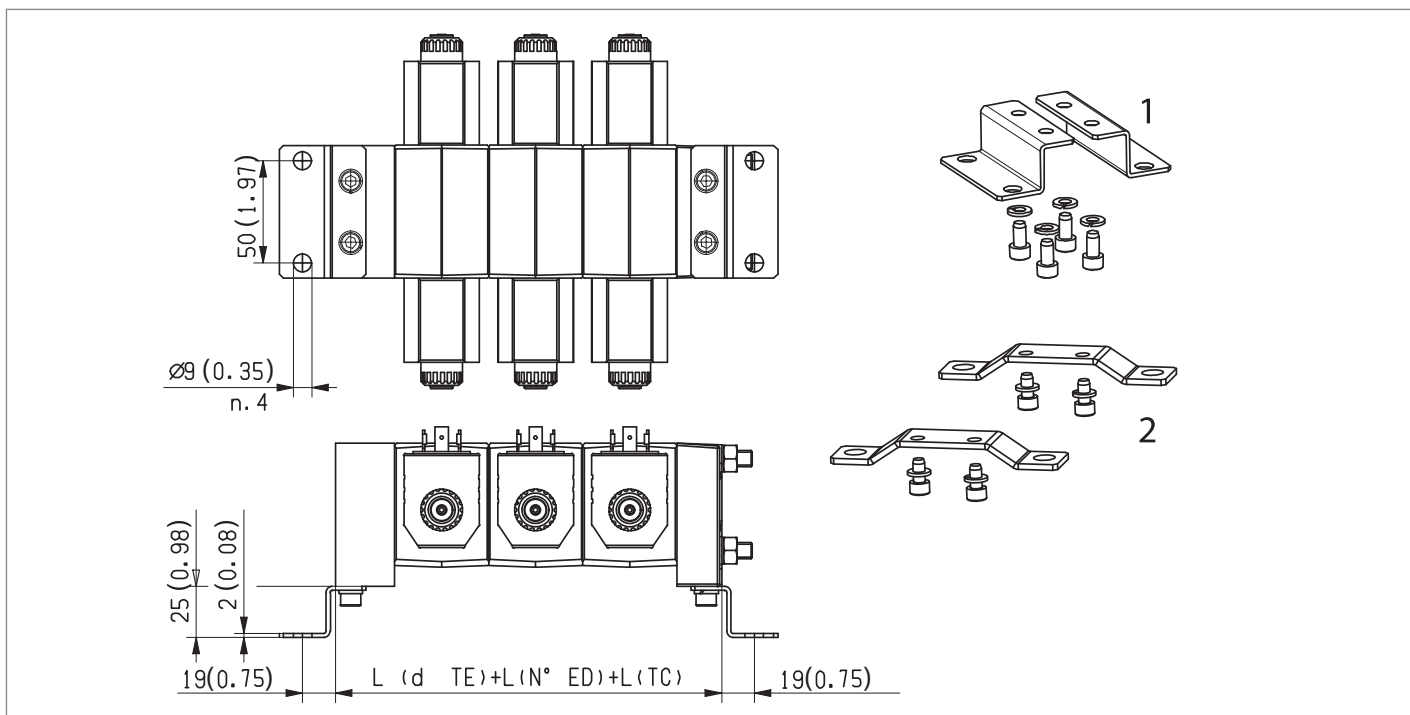
For 1 or 2 elements,
 the assembly kit is composed by 3 screws and 3 washers



For 3 or more elements,
 the assembly kit is composed by 3 tie-rods, 3 washers and 3 nuts

| Total flangeable elements | Screw or tie-rod length L mm (inch) | Tightening torque for tie rod on entry plate Nm (ft-lb) | Tightening torque for screws or nuts Nm (ft-lb) | Reference code | Type | Material Number |
|---------------------------|-------------------------------------|---|---|----------------|---------|-----------------|
| 1 | 80 (3.150) | N/A | 17-18 (12,5-13,3) | K-2201 | Screw | R933003721 |
| 2 | 125 (4.921) | N/A | 17-18 (12,5-13,3) | K-2202 | Screw | R933003722 |
| 3 | 185 (7.283) | 17-23 (12,5-17) | 17-18 (12,5-13,3) | K-2203 | Tie-rod | R933003723 |
| 4 | 230 (9.055) | 17-23 (12,5-17) | 17-18 (12,5-13,3) | K-2204 | Tie-rod | R933003724 |
| 5 | 275 (10.827) | 17-23 (12,5-17) | 17-18 (12,5-13,3) | K-2205 | Tie-rod | R933003725 |
| 6 | 320 (12.598) | 17-23 (12,5-17) | 17-18 (12,5-13,3) | K-2206 | Tie-rod | R933003726 |
| 7 | 365 (14.370) | 17-23 (12,5-17) | 17-18 (12,5-13,3) | K-2207 | Tie-rod | R933003727 |
| 8 | 416 (16.378) | 17-23 (12,5-17) | 17-18 (12,5-13,3) | K-2208 | Tie-rod | R933003728 |
| 9 | 460 (18.110) | 17-23 (12,5-17) | 17-18 (12,5-13,3) | K-2209 | Tie-rod | R933003729 |
| 10 | 510 (20.079) | 17-23 (12,5-17) | 17-18 (12,5-13,3) | K-2210 | Tie-rod | R933000000 |

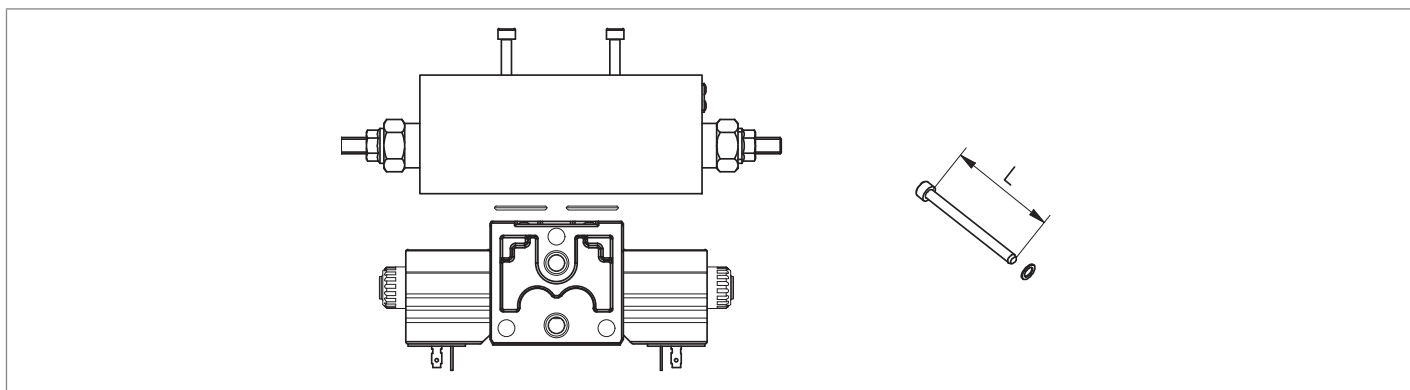
Fitting of mounting brackets



The kit is composed by 2 brackets, 4 screws and 4 washers.

| Nr. | Type | Tightening torque Nm (ft-lb) | Material Number |
|-----|--------|---------------------------------|--------------------|
| 1 | K-2215 | 9-10 (6.64-7.37) | R933003730 |
| 2 | K-2216 | 9-10 (6.64-7.37) | R933007089 |

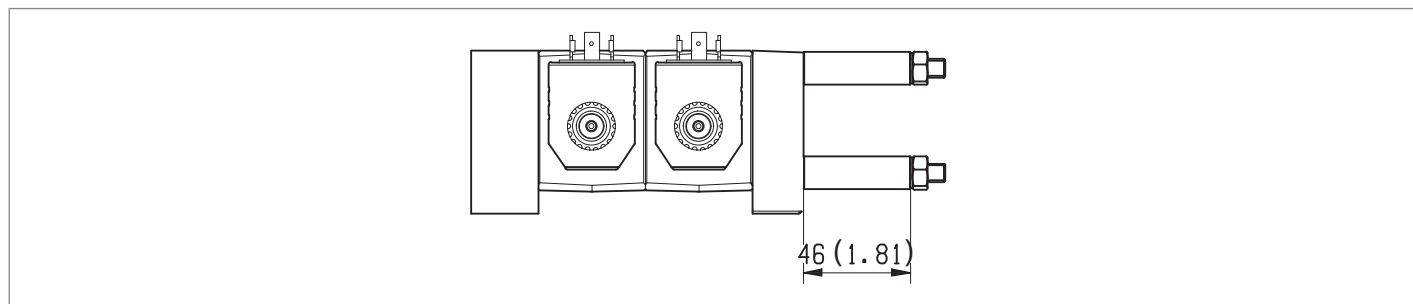
Assembling of flangeable element



The assembly kit is composed by 4 screws and 4 washers.

| Total flangeable elements | Screw or tie-rod length L mm (inch) | Tightening torque Nm (ft-lb) | Reference code | Material Number |
|------------------------------|--|---------------------------------|-------------------|--------------------|
| 1 | 60 (2.326) | 5-6 (3.69-4.42) | K-2221 | R933003731 |
| 2 | 120 (4.724) | 5-6 (3.69-4.42) | K-2222 | R933003732 |
| 3 | 175 (6.890) | 5-6 (3.69-4.42) | K-2223 | R933003733 |

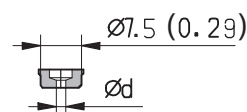
Kit for spacers between elements



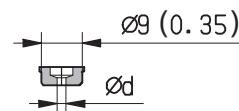
The spacers (code 44-00257012) are fitted in order to install longer tie-rods for future insertion of an extra directional element.

Flow restrictor

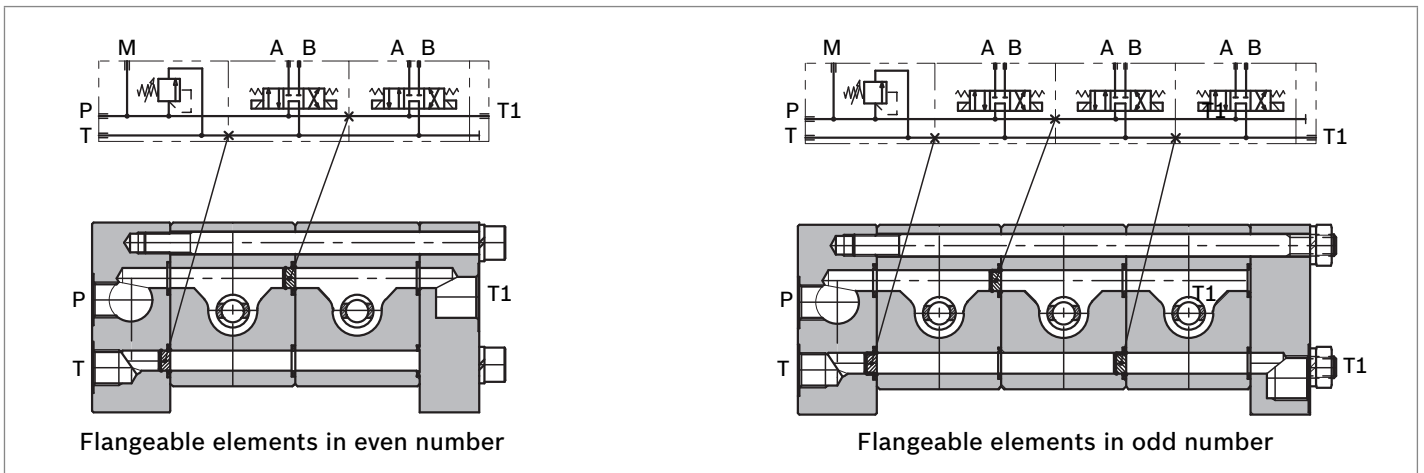
| Material description | Orifice I.D. mm (inch) | Material Number |
|----------------------|------------------------|-----------------|
| 50-04999 | Closed | R933002917 |
| 50-05003 | 0,3 (0.012) | R933002922 |
| 50-05004 | 0,4 (0.016) | R933003398 |
| 50-05001 | 0,5 (0.020) | R933002920 |
| 50-05000 | 0,6 (0.024) | R933002919 |
| 50-05002 | 0,7 (0.028) | R933002921 |
| 50-0500 | 0,8 (0.031) | R933002918 |
| 50-05008 | 0,9 (0.035) | R933002923 |
| 50-0501 | 1,0 (0.039) | R933002924 |
| 50-05015 | 1,1 (0.043) | R933002925 |
| 50-0502 | 1,2 (0.047) | R933002926 |
| 50-05022 | 1,35 (0.053) | R933002927 |
| 50-0503 | 1,5 (0.059) | R933002928 |
| 50-05032 | 1,6 (0.063) | R933002930 |
| 50-05031 | 1,7 (0.067) | R933002929 |
| 50-0504 | 2,0 (0.079) | R933002931 |
| 50-0505 | 2,2 (0.087) | R933002933 |
| 50-05045 | 2,5 (0.098) | R933002932 |
| 50-0506 | 3,0 (0.118) | R933002934 |
| 50-0508 | 3,2 (0.126) | R933002935 |
| 50-0510 | 4,0 (0.157) | R933007391 |
| 50-0515 | 5,0 (0.197) | R933008462 |



| Material description | Orifice I.D. mm (inch) | Material Number |
|----------------------|------------------------|-----------------|
| 50-07000 | Closed | R933002936 |
| 50-07020 | 0,8 (0.031) | R933002937 |
| 50-07021 | 1,0 (0.039) | R933007090 |
| 50-07022 | 1,1 (0.043) | R933007930 |
| 50-07023 | 1,2 (0.047) | R933007633 |
| 50-07024 | 1,4 (0.055) | R933007704 |
| 50-07030 | 1,6 (0.063) | R933002938 |
| 50-07031 | 1,7 (0.067) | R933007091 |
| 50-07040 | 2,0 (0.079) | R933002939 |
| 50-07043 | 2,25 (0.089) | R933009044 |
| 50-07045 | 2,5 (0.098) | R933007477 |
| 50-07047 | 2,75 (0.108) | R933002940 |
| 50-07050 | 3,0 (0.118) | R933002941 |
| 50-07056 | 3,5 (0.138) | R933009575 |
| 50-07057 | 3,75 (0.148) | R933007703 |
| 50-07060 | 4,0 (0.157) | R933007631 |
| 50-07070 | 5,5 (0.217) | R933007567 |



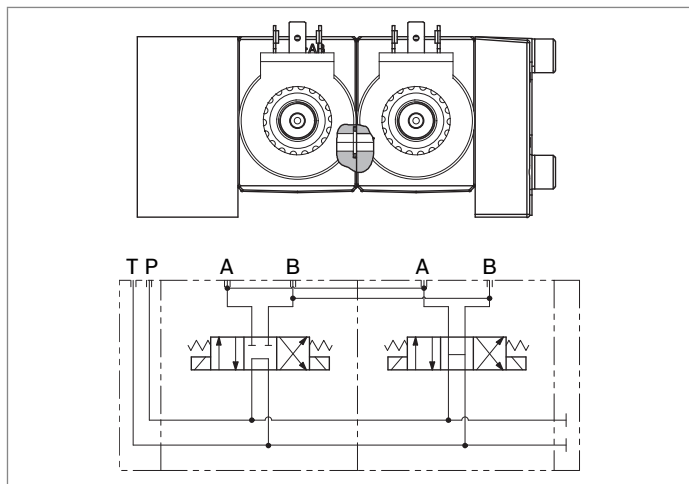
Series circuits



To have information about the pressure drops on elements, see the (DELTA P-Q) curves of P>T of A201 circuit of ED1 (RE 18301-01) or ED2 (RE 18301-02) modular elements.

Hydraulic Symbol with intermediate element between A and B lines

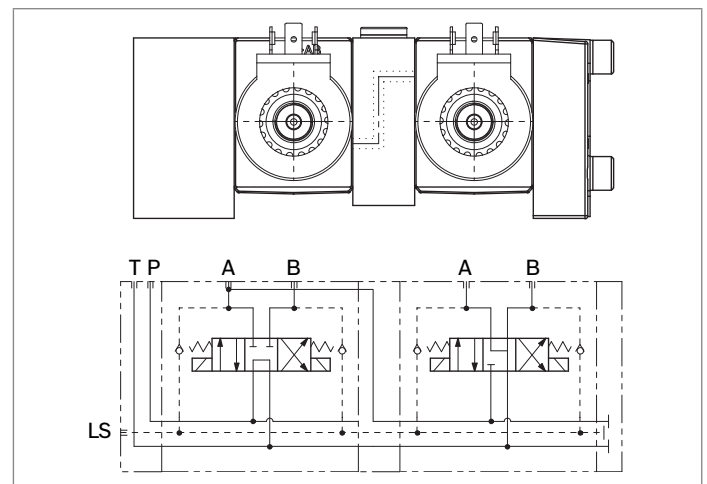
Flangeable elements with A and B ports in one side



scheme 1

Also available flangeable elements with A and B ports in one side, oriented either toward the inlet (TE) side, or toward the outlet (TC) side (see Hydraulic symbol 1).

Flangeable elements with A and B ports in one side, and with an intermediate body for connection of A and P



scheme 2

For flangeable elements with A and B ports in one side there is also a flangeable body to connect the A port of one element to the P port of the following element (see Hydraulic symbol 2).

Bosch Rexroth Oil Control S.p.A.

Oleodinamica LC Division
Via Artigianale Sedrio, 12
42030 Vezzano sul Crostolo
Reggio Emilia - Italy
Tel. +39 0522 601 801
Fax +39 0522 606 226 / 601 802
compact-hydraulics-cdv@boschrexroth.com
www.boschrexroth.com/compacthydraulics

© This document, as well as the data, specifications and other information set forth in it, are the exclusive property of Bosch Rexroth Oil Control S.p.a.. It may not be reproduced or given to third parties without its consent. The data specified above only serve to describe the product. No statements concerning a certain condition or suitability for a certain application can be derived from our information. The information given does not release the user from the obligation of own judgment and verification. It must be remembered that our products are subject to a natural process of wear and aging.
Subject to change.