

Inlet Elements with Primary Pressure Relief Valve and with Solenoid Unloading Cartridge

TE-05-__-

RE 18300-05

Edition: 02.2016

Replaces: 07.2012



Description

The inlet elements TE-05-__ are employed to connect the external P and T lines to the P and T channels inside the ED elements of the Directional Valve Assembly. They incorporate a pressure relief cartridge which limits the primary pressure in the P line. The relief setting can be checked through the Test Point port M. When fitted, the Normally Open Solenoid Unloading VEI Cartridge unloads to Tank all the P line flow; unloading stops when the cartridge coil is energized.

The TE-05-__ inlet elements are available in two versions:

- Body made of Black Anodized Aluminium (AL), or
 - Body made of Yellow Zinc plated (Cr+3) Cast Iron (CI).
- Port sizes can be G 3/8, G 1/2 or SAE 8 (3/4" 16 UNF).

Technical data

General			
Inlet Element Type		AL Version	CI Version
TE-05-02-00-	kg (lbs)	0.50 (1.10)	1.26 (2.78)
TE-05-03-00-	kg (lbs)	0.74 (1.68)	1.92 (4.20)
TE-05-56-00-	kg (lbs)	0.74 (1.68)	Not available
TE-05-02-S_-	kg (lbs)	0.60 (1.39)	1.40 (3.10)
TE-05-03-S_-	kg (lbs)	0.94 (2.06)	2.10 (4.60)
TE-05-56-S_-	kg (lbs)	0.94 (2.06)	Not available
Ambient Temperature	°C (°F)	-20....+50 (-4....+122) (NBR seals)	
Hydraulic			
Maximum pressure for aluminium version (AL)	bar (psi)	250 (3625)	
Maximum pressure for Cast Iron version (CI)	bar (psi)	310 (4500)	
Maximum inlet flow	l/min (gpm)	50 (13.2)	
Hydraulic fluid		Mineral oil based hydraulic fluids HL (DIN 51524 part 1).	
General properties: it must have physical lubricating and chemical properties suitable for use in hydraulic systems such as, for example:		Mineral oil based hydraulic fluids HLP (DIN 51524 part 2). For use of environmentally acceptable fluids (vegetable or polyglycol base) please consult us.	
Fluid Temperature	°C (°F)	-20....+80 (-4....+176) (NBR)	
Permissible degree of fluid contamination		ISO 4572: $\beta_{x \geq 75} X = 10 \dots 12$ ISO 4406: class 19/17/14 NAS 1638: class 8	
Viscosity range	mm ² /s	5....420	

Note

For applications with different specifications consult us

Ordering details

01	02	03	04	05	06	07	08
TE	-	05	-	-	-	-	-

Family

01	Inlet Elements	TE
----	----------------	----

Configuration

02	With primary pressure relief valve and with solenoid unloading cartridge	05
----	--	----

Ports

03	G 3/8 DIN 3852	02
	G 1/2 DIN 3852	03
	3/4-16 UNF-2B (SAE8)	56

Primary Pressure Relief range

04	Without primary pressure relief valve	00
	Pressure range 25-120bar (362-1740 psi)	SN
	Pressure range 40-200bar (580-2900 psi)	SB
	Pressure range 200-350bar (2900-5076 psi)	SV

Material

05	Cast Iron ¹⁾	CI
	Aluminium	AL

Cartridge voltage supply

06	No cartridge	No code
	Cartridge without coil	00
	12V DC	OB
	24V DC	OC
	26V DC	AC

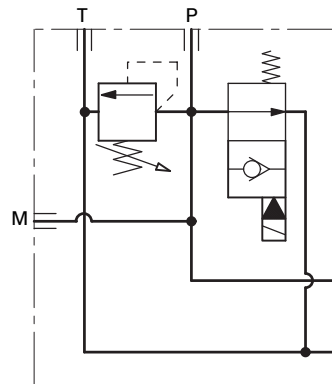
Electric connections

07	No cartridge	No code
	Without coils	00
	With coils, without mating connector DIN EN 175301-803 ²⁾	01
	With coils, with bi-directional diode, without mating connector vertical Amp-Junior	03
	With coils, with bi-directional diode, without mating connector DT04-2P	07

Options

08	No cartridge	No code
	Standard	00
	Push-button type manual override	OP
	Push and twist type manual override	SG

Symbol



1) Only available for versions with G 1/2 ports (TE-01-03-...)

2) For connectors ordering code see data sheet RE 18325-90.

Bosch Rexroth Oil Control S.p.A.

Oleodinamica LC Division
Via Artigianale Sedrio, 12
42030 Vezzano sul Crostolo
Reggio Emilia - Italy
Tel. +39 0522 601 801
Fax +39 0522 606 226 / 601 802
compact-hydraulics-cdv@boschrexroth.com
www.boschrexroth.com/compacthydraulics

© This document, as well as the data, specifications and other information set forth in it, are the exclusive property of Bosch Rexroth Oil Control S.p.a.. It may not be reproduced or given to third parties without its consent. The data specified above only serve to describe the product. No statements concerning a certain condition or suitability for a certain application can be derived from our information. The information given does not release the user from the obligation of own judgment and verification. It must be remembered that our products are subject to a natural process of wear and aging.
Subject to change.