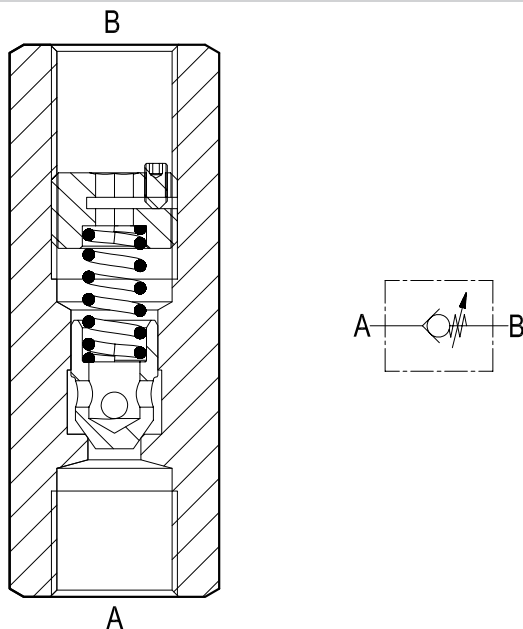


Check valves

Line mounted poppet type,
with adjustable cracking pressure

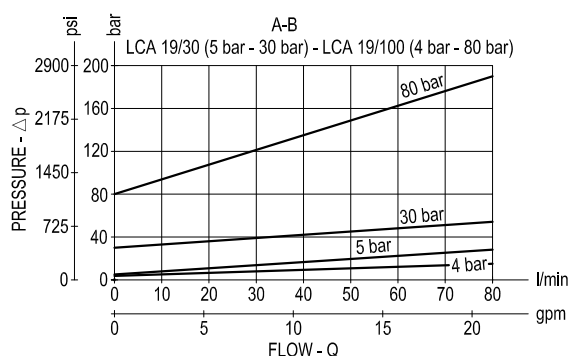
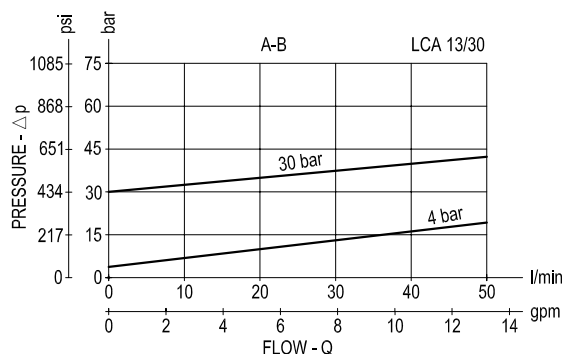
LCA 13 Series/LCA 19 Series



Description

Flow is always allowed to pass from A to B when pressure at A rises above the spring bias pressure and the poppet is pushed from the seat. The spring load is adjustable by turning the internal ring nut with an 8 mm Allen wrench: screwing down increases the spring load and increases the cracking pressure (in order to turn the Ring Nut, loosen first the little locking screw with a 2 mm Allen wrench; tighten it again once the spring load is adjusted). The valve is normally closed (checked) from B to A.

Performance



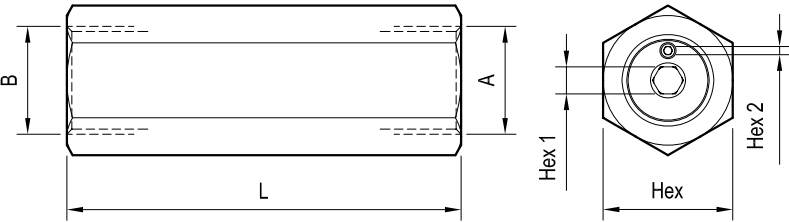
Technical data

Code	Pressure P max bar (psi)	Flow Q max l/min (gpm)
LCA 13	250 (3600)	50 (13)
LCA 19	250(3600)	80 (21)

Steel body, zinc plated

Δp curves vs. flow in "A-B" free flow direction.
For cracking pressure range refer to the specific table

Dimensions



Ports size / Dimensions

Code	Ports size A-B	L mm (inches)	Hex mm (inches)	Hex 1 mm (inches)	Hex 2 mm (inches)
LCA 13	G 1/2	110 (4.33)	27 (1.06)	8 (0.32)	2 (0.08)
LCA 19	G 3/4	110 (4.33)	36 (1.42)	8 (0.32)	2 (0.08)

Note: when ordering the valves Factory set please, specify the desired cracking pressure expressed in “bar”. Without such specification, the valves will be supplied non adjusted.

Ordering code

LCA	
series 13/30	= 13/30
series 19/30	= 19/30
series 19/100	= 19/100

Pressure range (only bar value see below)

	LCA 13/30	LCA 19/30	LCA 19/100
Pressure range bar (psi)	min 4 (58) max 30 (435)	min 5 (72.5) max 30 (435)	min 4 (58) max 80 (1160)

Type	Material number
LCA 13/30	R932500281
LCA 19/30	R932500288
LCA 19/100	R932006930

Type	Material number

Type	Material number