

Solenoid operated valves  
on-off relief, adjustable  
Common cavity, Size 10

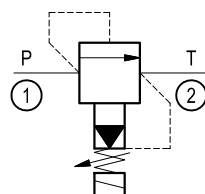
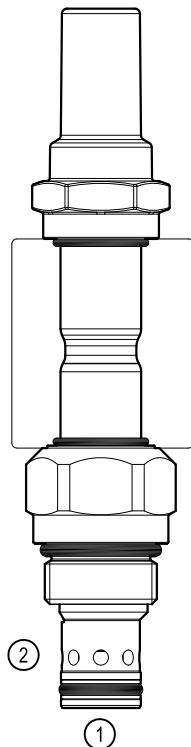
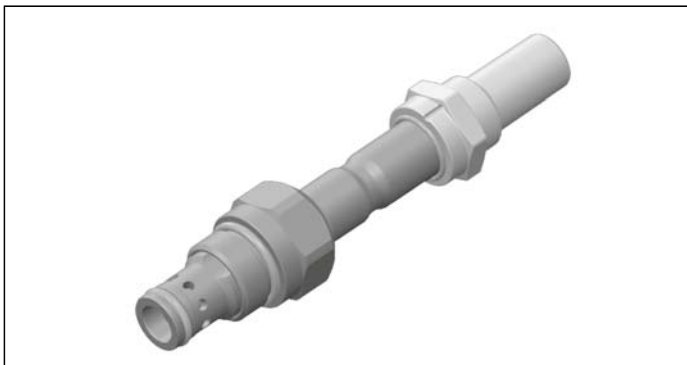
VER-10A

OD.10.04.36 - Y - 00

**RE 18324-15**

Edition: 03.2020

Replaces: 06.2019



**Technical data**

New VER-10A family incorporates a new solenoid concept providing excellent performance and enables cartridges to work in severe environment. With coil not energized, relief function is off and flow is permitted from port 1 to port 2; with coil energized relief function is on.

**Technical data**

General	
Weight	0.2 kg (0.44 lbs)
Installation orientation	Unrestricted
Storage ambient temperature range	-40 to 100 °C (-40 to 212 °F)
Operating ambient temperature range	-30 to 90 °C (-22 to 194 °F)
Salt spray test to DIN EN ISO 9227:2017-07	500h
Hydraulic	
Max. operating pressure	350 bar (5000 psi)
Max. admitted pressure port 2	140 bar (2000 psi)
Max. range	120 l/min. (32 gpm)
Max. internal leakage: <sup>1)</sup>	200 cm <sup>3</sup> /min. (12 cu.in./min.)
Switching time	Relief on ≤ 100 ms Relief off ≤ 80 ms
Fatigue cycle life	1 million cycles at 250 bar
Fluid temperature range	-20 to 80 °C (-4 to 176 °F)
Fluids: Mineral-based or synthetics with lubricating properties at viscosities of 20 to 380 mm <sup>2</sup> /s (cSt)	
Installation torque	41 - 47 Nm (30 - 35 ft-lbs)
Recommended degree of fluid contamination	Nominal value max. 10 µm (NAS 8) ISO 4406 19/17/14
MTTFd	150 years see RE 18350-51
Cavity	CA-10A-2N see 18325-70
Seal kit	code RG10A2010530100 material no. R901111366
Seal kit coil	code RG01Z0010000100 material no. R930058940
Other technical data	See data sheet 18350-50
Electrical	
Type of voltage	DC voltage
Coil type	D36
Supply voltage	See data sheet 18325-90
Voltage tolerance against ambient temperature	See characteristic curve
Power consumption	20 W
Type of protection	See data sheet 18325-90

Note: Coils must be ordered separately

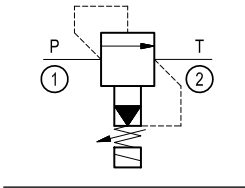
<sup>1)</sup> Measured at 200 bar (2900 psi)

**Ordering code**

<b>OD.10</b>	<b>04</b>	<b>36</b>	<b>Y</b>	<b>00000</b>	<b>*</b>
--------------	-----------	-----------	----------	--------------	----------

Series O/A to L  
unchanged performances and dimensions

Solenoid operated valves on-off relief,  
adjustable



Common cavity: CA-10A-2N

SPRINGS			
	Adj. press. range bar (psi)	Pressure increase bar/turn (psi/turn)	Std. setting bar (psi) Q=5 l/min.
<b>1</b>	30-140 (435-2000)	50 (725)	100 (1450)
<b>2</b>	70-250 (1015-3600)	90 (1305)	200 (2900)
<b>3</b>	120-350 (1740-5000)	135 (1958)	350 (5000)

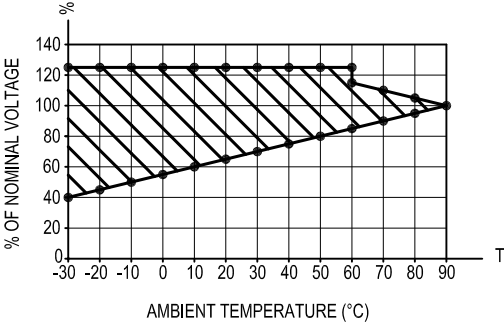
**Preferred types**

Type	Material number
OD1004361000000	R930066494
OD1004362000000	R930066495
OD1004363000000	R930066496

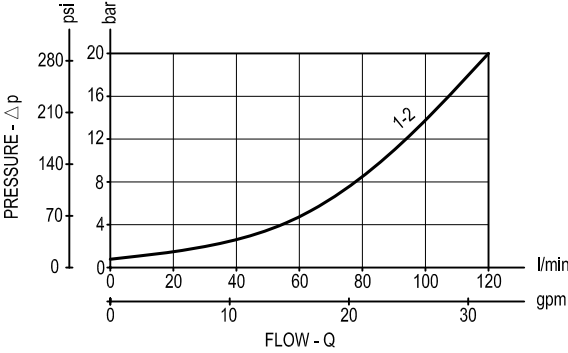
Type	Material number

Characteristic curves

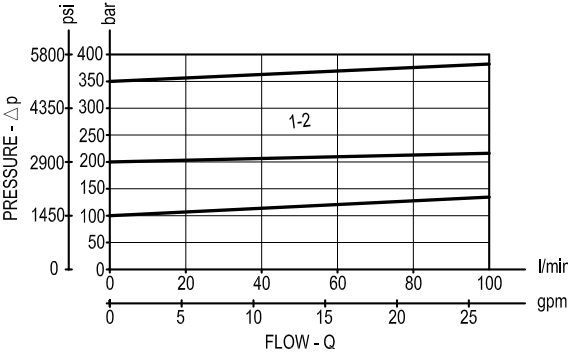
Admissible supply voltage Vs. Ambient temperature at 100% duty cycle

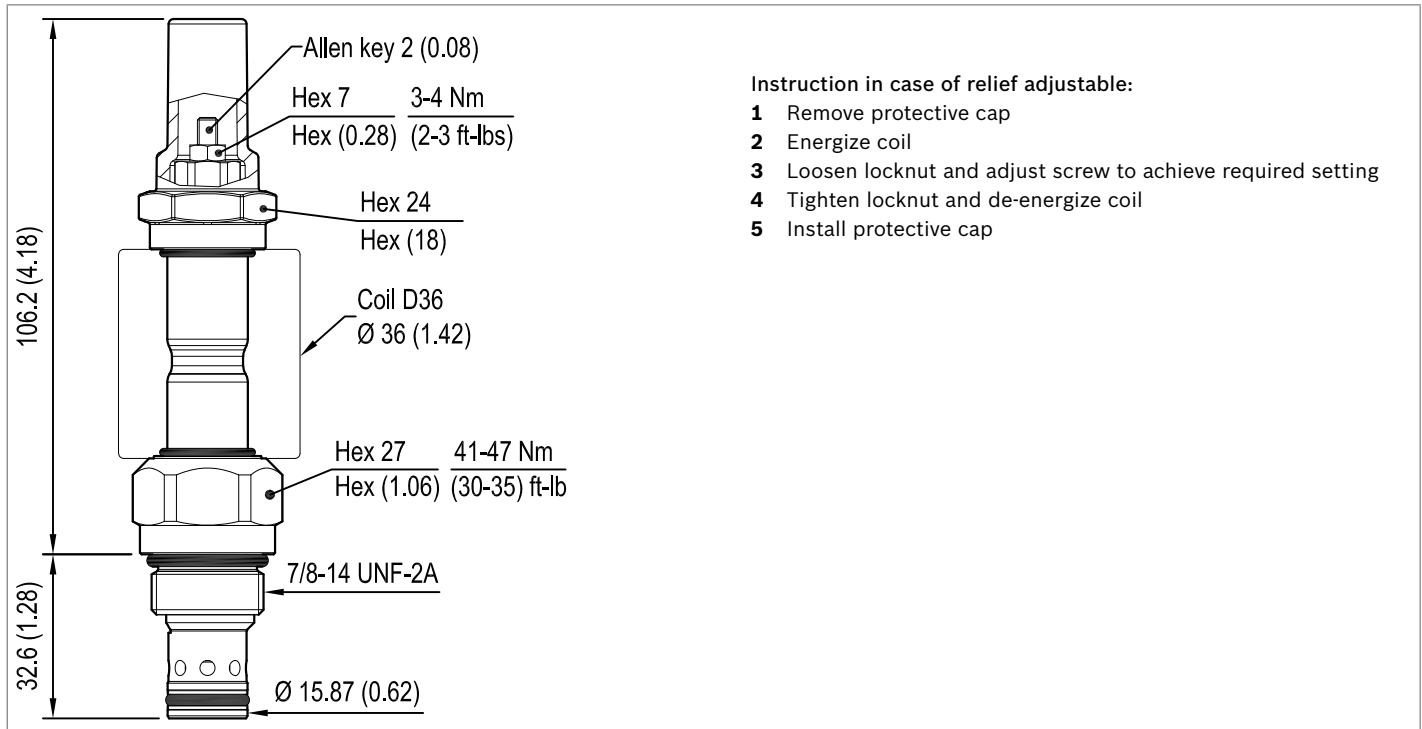


Relief off



Relief on



**Dimensions****Solenoid operated valves on-off relief,  
adjustable****Bosch Rexroth Oil Control S.p.A.**

Via Leonardo da Vinci 5  
P.O. Box no. 5  
41015 Nonantola – Modena, Italy  
Tel. +39 059 887 611  
Fax +39 059 547 848  
compact-hydraulics-cv@boschrexroth.com  
www.boschrexroth.com/compacthydraulics

© This document, as well as the data, specifications and other information set forth in it, are the exclusive property of Bosch Rexroth Oil Control S.p.a.. It may not be reproduced or given to third parties without its consent. The data specified above only serve to describe the product. No statements concerning a certain condition or suitability for a certain application can be derived from our information. The information given does not release the user from the obligation of own judgment and verification. It must be remembered that our products are subject to a natural process of wear and aging. Subject to change.