

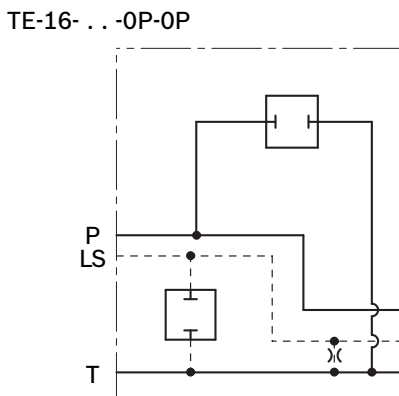
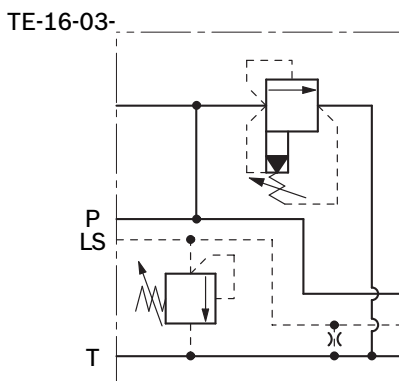
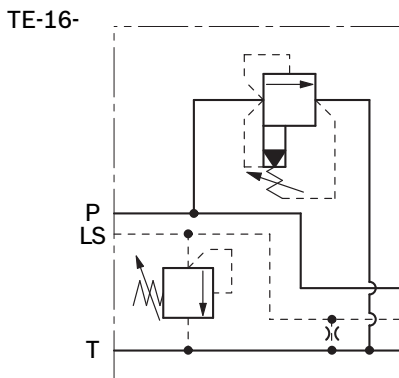
# Inlet elements with LS connections and double pressure relief valve (P and LS line)



DV0099

TE-16-\_\_-

HYDRAULIC - SYMBOL



## Description

The inlet elements TE-16-\_\_ are employed to connect the external P,T lines to the P,T channels inside the ED elements of the Directional Valve Assembly and to connect the LS ports of the elements equipped with LS channels. They incorporate two pressure relief cartridge which limits the maximum primary pressure in the P line and the maximum load pressure in the LS line and unloads to tank any excess flow.

The TE-16-\_\_ inlet elements are available with body made of yellow zinc plated (Cr+3) cast iron (CI).

Ports sizes can be G 1/2 or G 3/4 or SAE10 (7/8" 14 UNF).

LS ports are G 1/4 for BSPP version, and SAE 4 (7/16" 20 UNF) for "UNF" version.

## Technical Data (for applications outside these parameters, please consult us)

### General

TE16...	kg [lbs]	2.6 [6]
Ambient Temperature	°C [°F]	-20....+50 [-4....+120]

### Hydraulic

Maximum pressure	bar [psi]	310 [4500]
Maximum flow	l/min [gpm]	120 [31.7]
Hydraulic fluid	Mineral oil based hydraulic fluids HL (DIN 51524 part 1). Mineral oil based hydraulic fluids HLP (DIN 51524 part 2). For use of environmentally acceptable fluids (vegetable or polyglycol base) please consult us.	
Fluid Temperature	°C [°F]	-20....+80 [-4....+176] (NBR)
Permissible degree of fluid contamination	ISO 4572: $\beta_{x \geq 75} X=12...15$ ISO 4406: class 19/17/14 NAS 1638: class 8	
Viscosity range	mm <sup>2</sup> /s	5....420

## Ordering Details

TE	-	16	-	-	-	-	-	-	-	-	-	CI
----	---	----	---	---	---	---	---	---	---	---	---	----

**Family**  
Inlet Elements

**Material**  
Cast Iron

**Configuration**  
Inlet plate for LS pump system with double check valve (on P and LS line)

**Size of drain orifice for LS**

0X = Closed  
 0C = Diam. 0.3 (Ø0.5+wire0.4) <sup>1)</sup>  
 0E = Diameter 0.4  
 0G = Diameter 0.5

**Ports**  
 G 1/2 DIN 3852 =03  
 G 3/4 DIN 3852 =04  
 7/8-14 UNF-2B (SAE10) =57

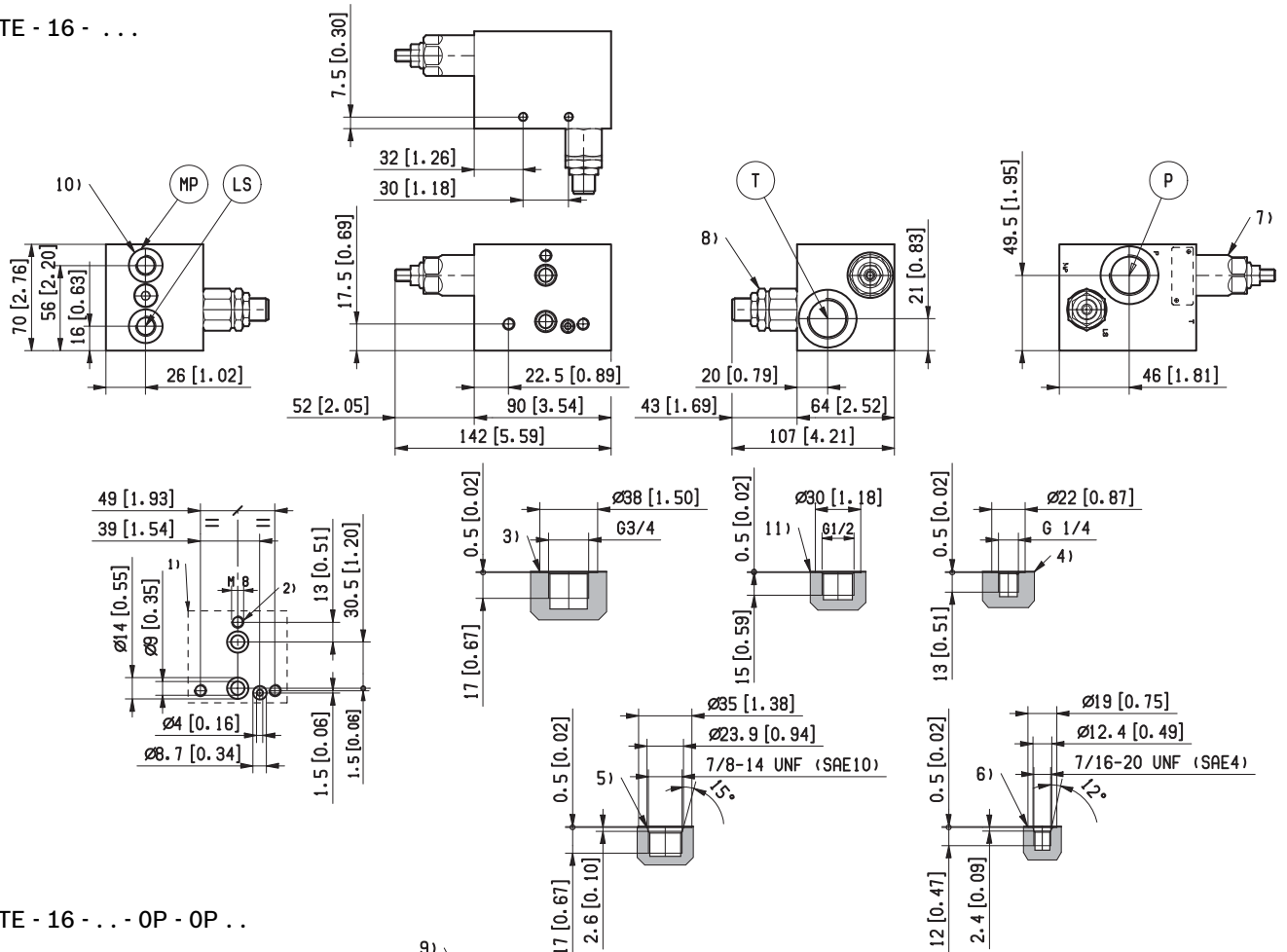
**Primary pressure relief range**  
 35-140 bar [508-2030 psi] =10  
 70-280 bar [1015-4060 psi] =20  
 140-420 bar [2030-6091 psi] =35  
 Plugged =0P

**Secondary pressure relief valve**  
 SN = 25-120 bar [362-1470 psi]  
 SB = 40-200 bar [580-2900 psi]  
 SV = 200-350 bar [2900-5076 psi]  
 0P = Plugged

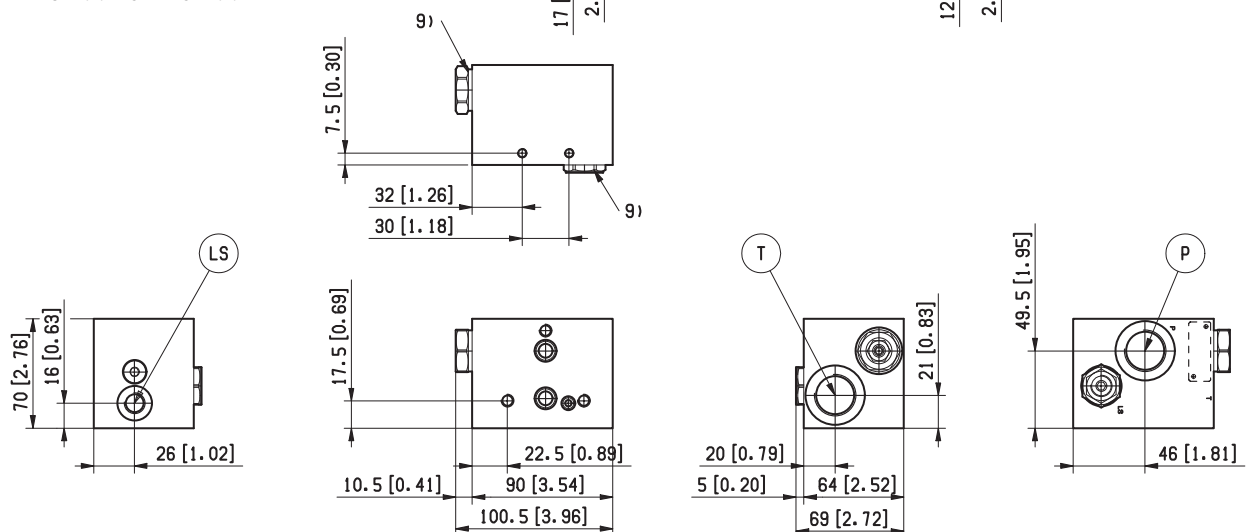
<sup>1)</sup> Recommended version.

## External Dimensions and Ports

TE - 16 - ...



TE - 16 - ... - OP - OP ...



- 1 Flange specifications for coupling to the ED Directional Valve Elements
- 2 Three threaded holes M8 for coupling of the ED Directional Valve Elements (refer to RE 18301-90/10.09).
- 3 Hydraulic ports P and T G 3/4 , inlet elements TE-16-04-...
- 4 Hydraulic ports MP,LS, G 1/4, inlet elements TE-16-03-... and hydraulic ports LS G 1/4, inlet elements TE-16-04-...
- 5 Hydraulic ports P and T SAE10, inlet elements TE-16-57-...

- 6 Hydraulic ports LS SAE4, inlet elements TE-16-57-...
- 7 Primary pressure relief cartridge (P line) VSPN-10A, with screw type adjuster (refer to RE18318-08-09.09).
- 8 Secondary pressure relief cartridge (LS line) VMD1020, with screw type adjuster.
- 9 plugs for primary and secondary pressure relief valves
- 10 Hydraulic ports MP G 1/4, available only for inlet elements TE-16-03-...
- 11 Hydraulic ports P and T G 1/2, inlet elements TE-16-03-...

