

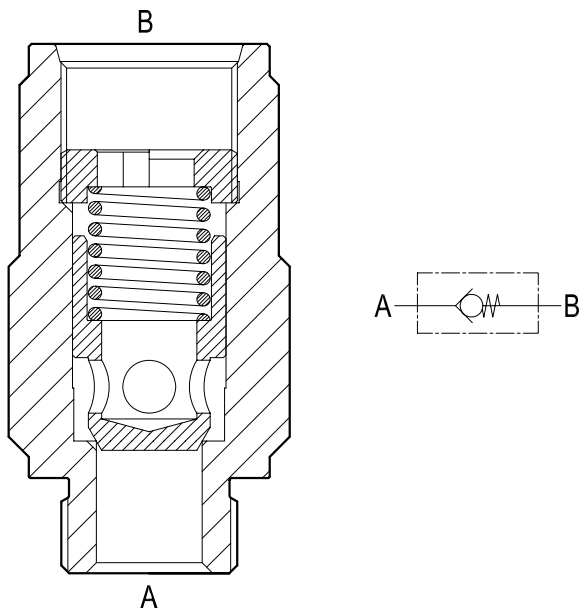
Check valves

Poppet type with male-female threaded sleeve



VU-MF (G1/2 - G3/4)

04.31.17.00-Y-Z



### Description

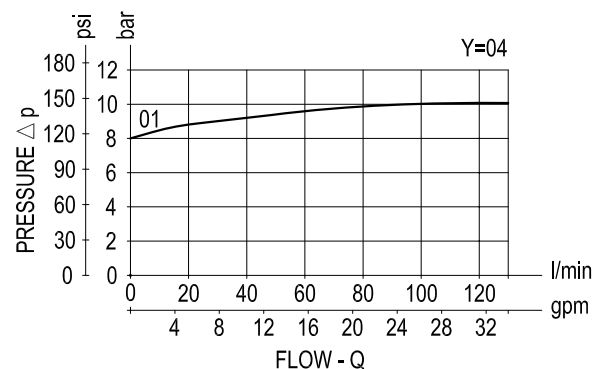
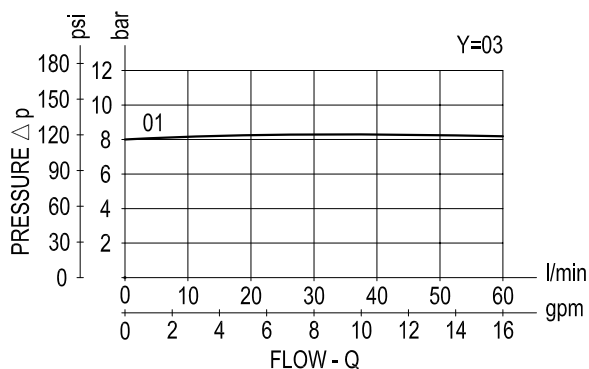
Flow is always allowed to pass from A to B when pressure at A rises above the spring bias pressure and the poppet is pushed from the seat. The valve is normally closed (checked) from B to A. Precision machining and hardening processes allow virtually leak free performance in the checked condition.

### Technical data

Ports	Pressure P max bar (psi)	Flow Q max l/min (gpm)	Weight kg (lbs)
G 1/2	350 (5000)	60 (16)	0.30 (0.66)
G 3/4	350 (5000)	130 (34)	0.44 (0.97)

Steel body, zinc plated

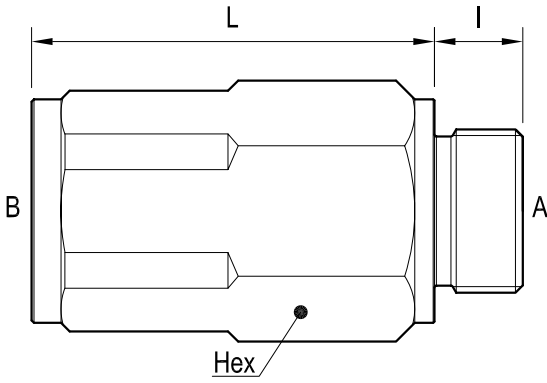
### Performance



$\Delta p$  curves vs. flow in "A-B" free flow direction

For cracking pressure range refer to the specific table.

**Dimensions**



**Ports size / Dimensions**

Y	Ports A - B	L mm (inches)	I mm (inches)	Hex mm (inches)
03	G 1/2	57 (2.24)	14 (0.55)	30 (1.18)
04	G 3/4	69 (2.72)	16 (0.63)	36 (1.42)

**Springs**

Z	Cracking pressure		Ordering code	Ordering code
	bar	psi	Y=03	Y=04
01	8	116	03.51.01.428	03.51.01.450

**Advantages**

- Very compact design and inline mounting for space saving.
- Four sizes (see also next page) provide great adaptability to the system.
- Mounting position is unrestricted.
- Very low  $\Delta p$  in the free flow direction.

**Ordering code**

<b>04.31.17.00</b>	<b>Y</b>	<b>Z</b>
--------------------	----------	----------

Poppet type with male-female threaded sleeve

Springs see table "Z"

Ports size / Dimensions see table "Y"

Type	Material number	Type	Material number	Type	Material number
043117000301000	R930000444				
043117000401000	R930000445				