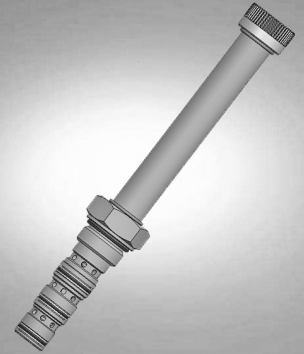


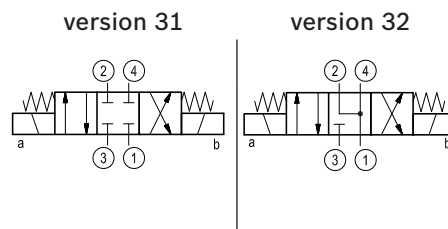
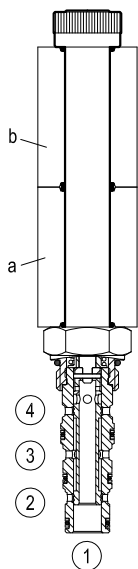
Solenoid operated valves direct acting spool 4-way 3-position

Common cavity, Size 10



VED-10A-43

OD.14 - 3W - 78 - Y - 00



General

Weight	kg (lbs)	0.27 (0.6)
Installation orientation		Optional
Ambient temperature range	°C (°F)	-30 to 60 (-22 to 140) - coil 30W

Hydraulic

Max. operating pressure port 2-3-4	bar (psi)	280 (4000)
Max. operating pressure port 1		210 (3000)
Max. flow	l/min. (gpm)	20 (6)
Max. internal leakage (*)	cm ³ /min. (cu.in./min.)	120 (7)
Fluid temperature range	°C (°F)	-20 to 80 (-4 to 176)
Fluids		Mineral-based or synthetics with lubricating properties at viscosities of 20 to 380 mm ² /s (cSt)
Installation torque	Nm (ft-lbs)	44-56 (33-41)
Filtration		Nominal value max. 10µm (NAS 8) ISO 4406 19/17/14
Cavity		CA-10A-4N see RE 18325-70
Seal kit	code material no.	RG10A4010530100 R901111373
Seal kit coil	code material no.	RG16A2PMVQ0010 R934003963
Other technical data		See data sheet RE 18350-50

(*) Measured at 210 bar (3000 psi) (oil at 46 cSt)

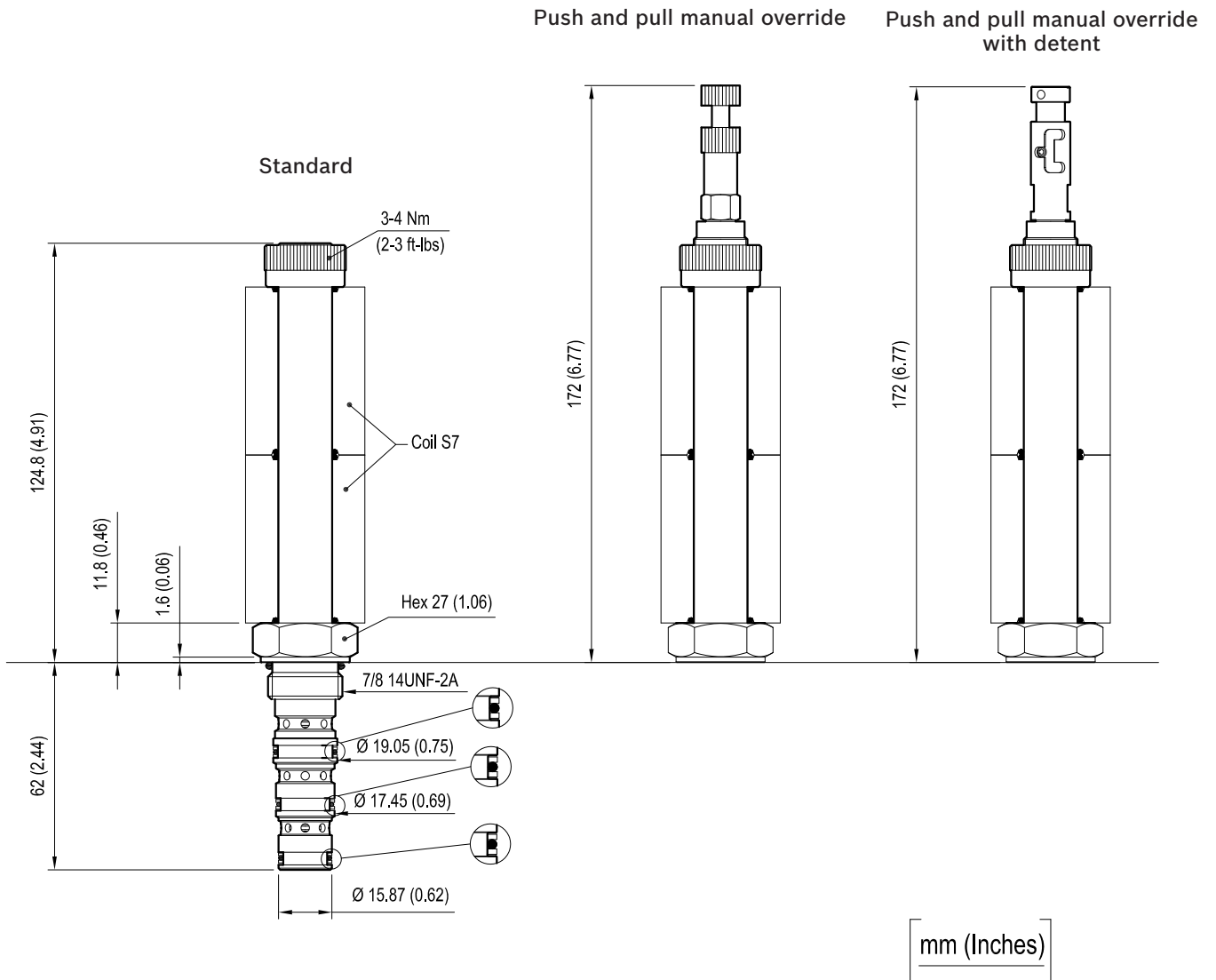
Electrical

Type of voltage	DC voltage
Coil type	S7
Supply voltage	See data sheet RE 18325-90
Power consumption	W 30
Duty cycle coil	% 100 see RE 18325-90
Type of protection	See data sheet RE 18325-90
Nominal voltage coil 30W	-10% + 10%

Note: Coils must be ordered separately.

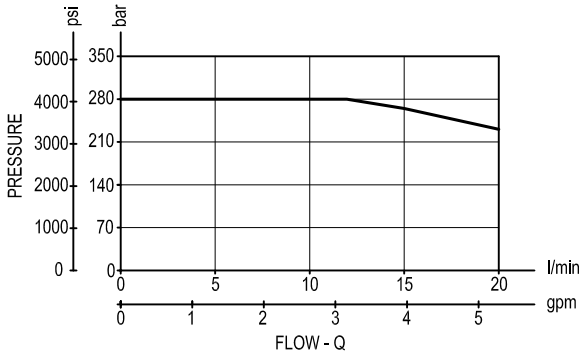
Dimensions

Solenoid operated valves spool 4-way 3-position



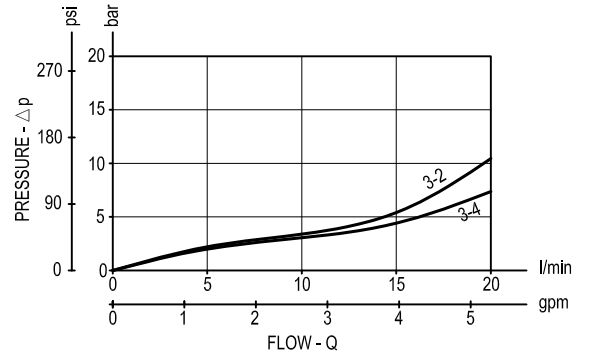
Performance graphs

Performance limits
(Hot coil at nominal voltage)

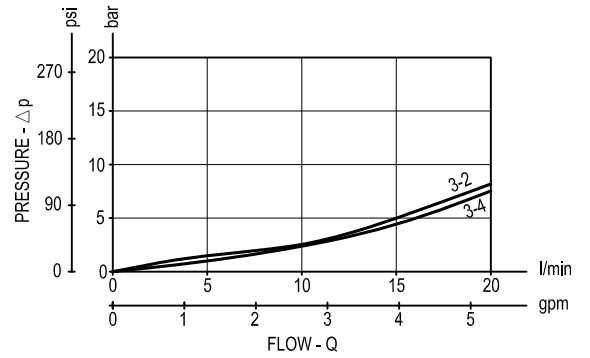
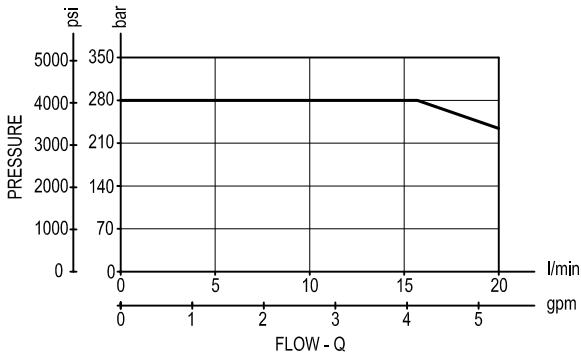


Version 31

Characteristic curves



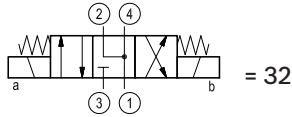
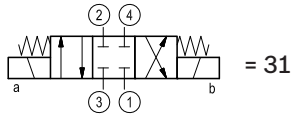
Version 32



Ordering code

OD.14	*	78	*	00
-------	---	----	---	----

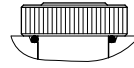
Solenoid operated valves
spool 4-way 3 position



Common cavity: CA-10A-4N

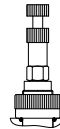
standard type

80 =



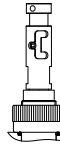
push and pull manual override

81 =



push and pull manual override
with detent

82 =



Type	Material number
OD143178800000	R901113701
OD143178810000	R901113703
OD143178820000	R934000642
OD143278800000	R901113706
OD143278810000	R901126908
OD143278820000	R934000651

Type	Material number