

Relief, bi-directional direct acting poppet type
differential area
Common cavity, Size 10

VSNG-10A

04.11.59 - X - 85 - Z

RE 18318-07

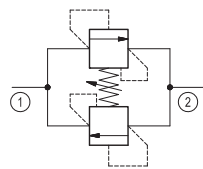
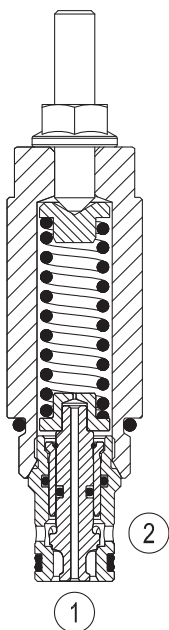
Edition: 03.2016

Replaces: 09.2009



Description

Flow is blocked bi-directionally between 1 and 2 until pressure at either port increases to meet the selected valve setting, lifting the poppet from its seat and allowing relief flow to the opposite port. The unique Bosch Rexroth Oil Control poppet design provides consistent cracking pressures at both ports and enhanced stability at all flows and pressures. Maximum difference for crack pressure in both direction : 10 bar (145 psi)



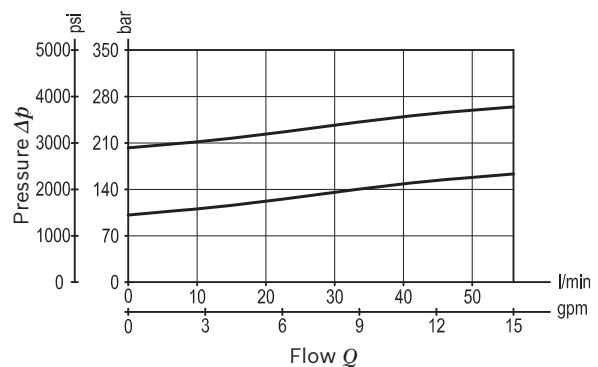
Technical data

Max. operating pressure port 1	240 bar (3500 psi)
Max. pressure admitted port 2	240 bar (3500 psi)
Max. flow	56 l/min (15 gpm)
Max. internal leakage ¹⁾	30 cm ³ /min. (1.8 cu.in./min.)
Fluid temperature range	-30 to 100 °C (-22 to 212 °F)
Installation torque	41 - 47 Nm (30 - 35 ft-lbs)
Weight	0.25 kg (0.55 lbs)
Cavity	CA-10A-2N (see data sheet 18325-70)
Lines bodies and standard assemblies	Please refer to section "Hydraulic integrated circuit" or consult factory
Seal kit ²⁾	Code: RG10A201053100 material no: R901111366
Fluids	Mineral-based or synthetics with lubricating properties at viscosities of 10 to 500 mm ² /s (cSt)
Recommended degree of fluid contamination	Nominal value max. 10µm (NAS 8) / ISO 4406 19/17/14
Installation position	No restrictions
Other Technical Data	See data sheet 18350-50

1) Measured at 200 bar (2900 psi)

2) Only external seals for 10 valves

Characteristic curve



Ordering code

04.11.59	X	85	Z	00	*
-----------------	----------	-----------	----------	-----------	----------

Relief,
bi-directional direct acting poppet type
differential area

Series 0/A to L
unchanged performances and dimensions

Version and options standard

Adjustments

03 Leakproof hex. socket screw

85 Common cavity, Size 10

SPRINGS

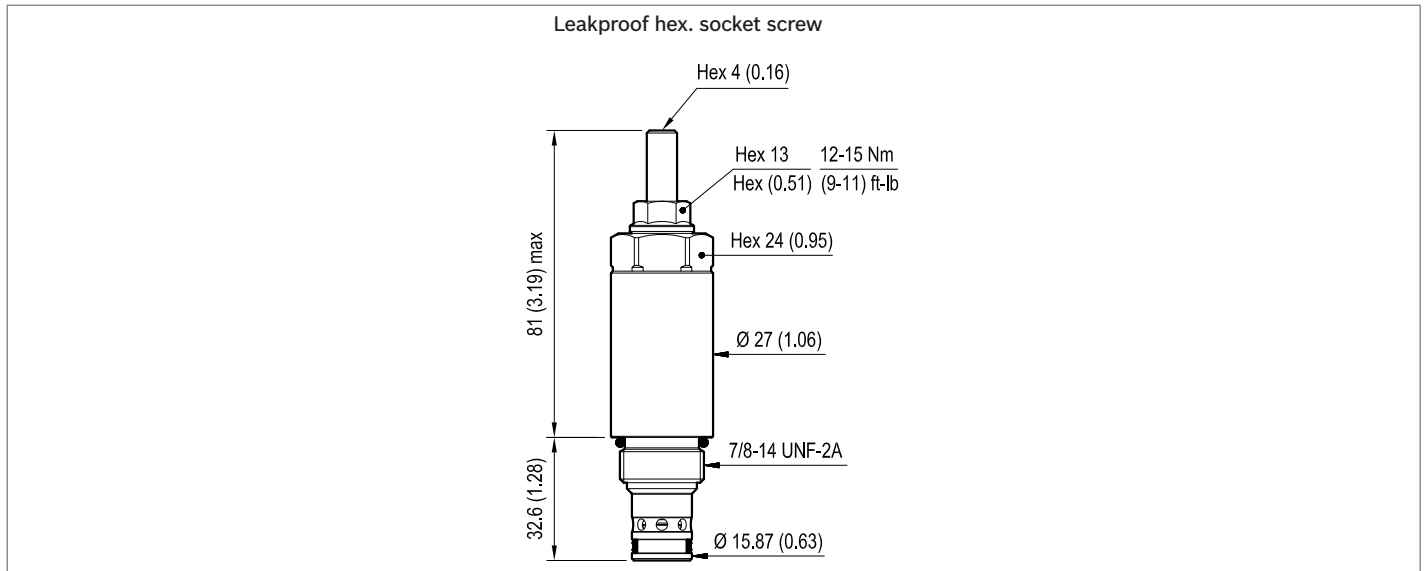
	Adj. press. range bar (psi)	Pressure increase bar/turn (psi/turn)	Std. setting bar (psi) Q=5 l/min
10	30-100 (450-1450)	13.5 (196)	100 (1450)
20	100-240 (1450-3500)	31 (450)	200 (2900)

Preferred types

Type	Material number
041159038510000	R901109725
041159038520000	R901109726

Type	Material number

Dimensions



Bosch Rexroth Oil Control S.p.A.

Via Leonardo da Vinci 5
P.O. Box no. 5
41015 Nonantola – Modena, Italy
Tel. +39 059 887 611
Fax +39 059 547 848
compact-hydraulics-cv@boschrexroth.com
www.boschrexroth.com/compacthydraulics

© This document, as well as the data, specifications and other information set forth in it, are the exclusive property of Bosch Rexroth Oil Control S.p.a.. It may not be reproduced or given to third parties without its consent. The data specified above only serve to describe the product. No statements concerning a certain condition or suitability for a certain application can be derived from our information. The information given does not release the user from the obligation of own judgment and verification. It must be remembered that our products are subject to a natural process of wear and aging. Subject to change.